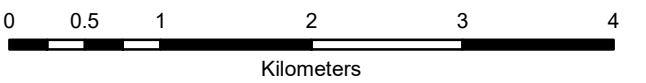


NETWORK OF PROTECTED AREAS FOR AGRICULTURAL
AND AGRO-INDUSTRIAL DEVELOPMENT (NPAAAD) MAP

Municipality of Culion
Province of Palawan



SCALE 1:50,000



Universal Transverse Mercator Zone 51 North PRS 1992
DISCLAIMER: All political boundaries are not authoritative

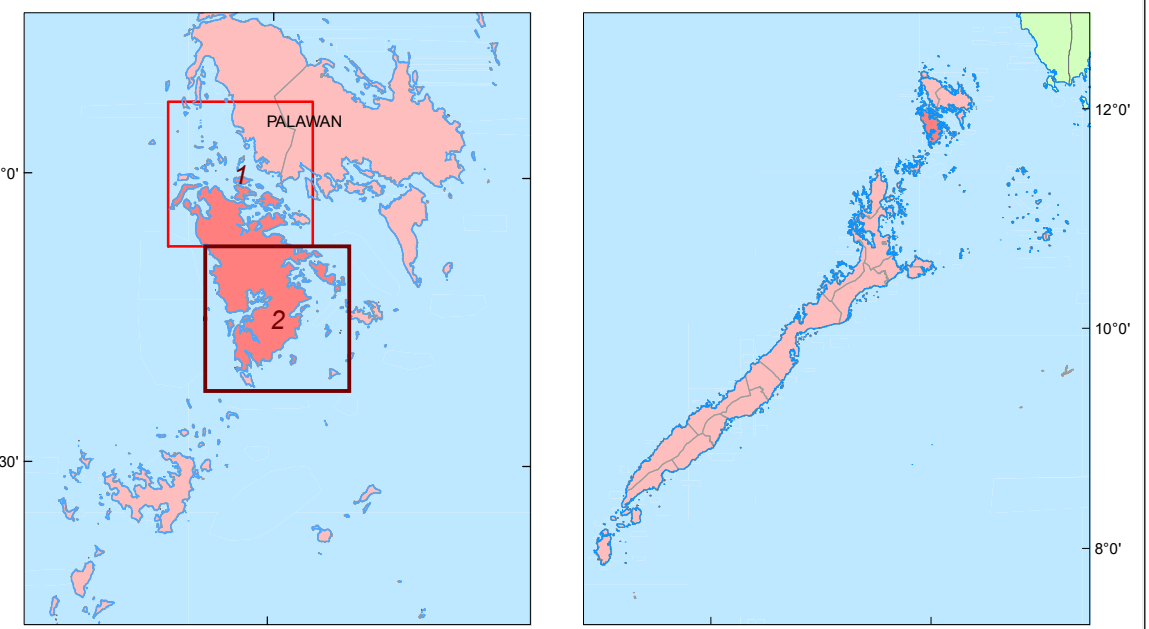
LEGEND

MAPPING SYMBOL	DESCRIPTION	AREA	
		(Ha)	(%)
PRIME AGRICULTURAL LANDS			
A	All irrigated lands/areas	52.52	1.18
B	All irrigable lands already covered by irrigation projects with firm funding commitments	0	0
C	All alluvial plain lands highly suitable for agriculture, not irrigated	4,367.42	98.82
D	Agro-industrial croplands or lands presently planted to industrial crops that support the viability of existing agricultural infrastructure and agro-based enterprises	0	0
E	Highlands or areas located at an elevation of five hundred (500) meters or above highly suitable for growing semi-temperate and high value crops	0	0
FRAGILE AGRICULTURAL LANDS			
F	All agricultural lands that are ecologically fragile, the conversion of which will result in serious environmental degradation that will affect mangrove areas and fish sanctuaries	0	0
G	All fishery areas as defined pursuant to Fisheries Code of 1998	0	0
MISCELLANEOUS LAND TYPES (Not Relevant for Agriculture)			
H	Forest/Watershed areas (critical watersheds including mangroves)	--	--
Bu	Built-up Areas (urban land, airport, roads and bridges)	--	--
Others	Quarry, mine pit, barren land, rock land, river wash, beach sand, sand dunes, landfill	--	--
TOTAL		4,419.94	100

CONVENTIONAL SIGNS

ROADS	BOUNDARY	HYDROLOGY
Expressway	Regional	Sea / Shoreline
Trunk line	Provincial	Lakes / Rivers
Primary	City	PLACES
Secondary	Municipal	Capital City / City
Tertiary	Barangay	Capital Town / Town

LOCATION MAP



MISCELLANEOUS INFORMATION

This publication is licensed under a Creative Commons Attribution 4.0 International License. This license allows others to redistribute this work non-commercially, as long as the original creator is credited and derivative product/s are licensed under identical terms.

Unless otherwise noted, copyright and any other intellectual property rights, if any, in this publication is owned by the Philippine Government. This publication should be attributed as: BSWM, 2022 NPAAAD Map Series.

Users noting errors or omissions in this publication are requested to inform the Bureau of Soils and Water Management.

SOURCES OF INFORMATION: Topographic information taken from NAMRIA Topographic Map at 1:50,000 scale. Land Resources Information and NPAAAD/SAFDZ from the Agricultural Land Management and Evaluation Division (ALMED) and Soils Survey Division (SSD). Land Use/Vegetation Cover are obtained from the Land Use System (FAO, 2015), Philippine Rice Information System (PRISM) (IRRI, 2015) OpenStreetMap (OSM) and Satellite Images from Google. The slope and elevation are generated from SRTM 30-meter spatial resolution.

Data analysis and compilation spearheaded by the ALMED with the technical support of the SSD.

These maps were produced through the Review/Updating of the NPAAAD and SAFDZ Project.

Map produced by the Geomatics and Soil Information Technology Division (GSITD).

Collaborating Agencies : Department of Agriculture Regional Field Offices (DA-RFOs) and other concerned Offices : Local Government Units (LGUs)

BERNARDO B. PASCUA
Chief, ALMED

GINA P. NILO, Ph.D.
Director, BSWM