


REPUBLIC OF THE PHILIPPINES
DEPARTMENT OF AGRICULTURE
BUREAU OF SOILS AND WATER MANAGEMENT
SRDC Bldg, Elliptical Road Corner Visayas Avenue, Diliman, Quezon City, Philippines 1101
customers.center@bsowm.da.gov.ph (02) 8332-9634 / (02) 8273-2474 loc 3202

STRATEGIC AGRICULTURE AND FISHERIES
DEVELOPMENT ZONES (SAFDZ) MAP

Municipality of Carmen
Province of Agusan del Norte


SCALE 1:50,000
0 0.5 1 2 3 4
Kilometers
Universal Transverse Mercator Zone 51 North PRS 1992
DISCLAIMER : All political boundaries are not authoritative

LEGEND			
MAPPING SYMBOL	DESCRIPTION	AREA	
		Ha	(%)
SAFDZ			
1	Strategic Crop Sub-Development Zone	1,854.9	29.17
2	Strategic Livestock Sub-Development Zone	358.7	5.63
3	Strategic Fishery Sub-Development Zone	0	0
4	Strategic Integrated Crop/Livestock Sub-Development Zone	0	0
5	Strategic Integrated Crop/Fishery Sub-Development Zone	0	0
6	Strategic Integrated Crop/Livestock/Fishery Sub-Development Zone	0	0
7	Strategic Integrated Fishery and Livestock Sub-Development Zone	0	0
FUTURE SAFDZ			
8	Remaining NPAAAD	310.24	4.87
NON-SAFDZ			
9	Agro-Forestry Zone	3,838.82	60.33
10	Forest/Watershed areas (critical watersheds including mangroves)	--	--
Bu	Built-up areas (urban land, airport, roads and bridges)	--	--
Others	Quarry, mine pit, barren land, rock land, river wash, beach sand, sand dunes, landfill	--	--
TOTAL		6,362.66	100

CONVENTIONAL SIGNS

ROADS

- Expressway
- Trunk line
- Primary
- Secondary
- Tertiary

BOUNDARY

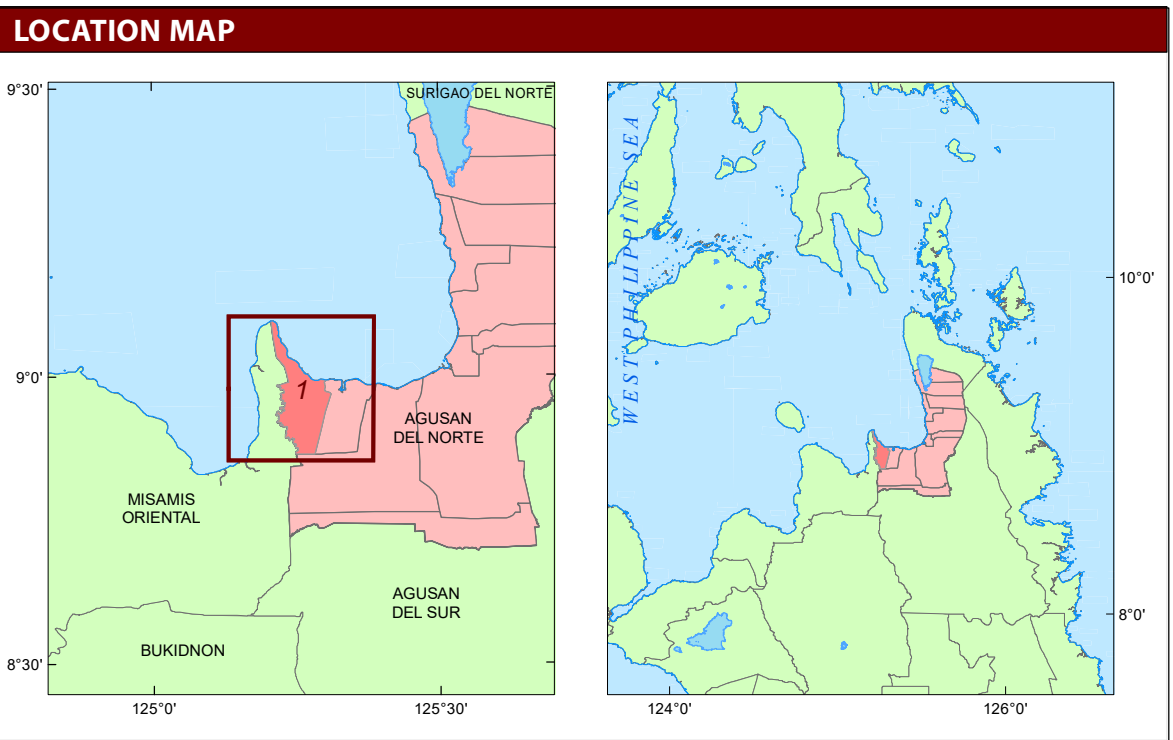
- Regional
- Provincial
- City
- Municipal
- Barangay

HYDROLOGY

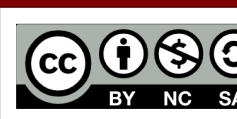
- Sea / Shoreline
- Lakes / Rivers

PLACES

- Capital City / City
- Capital Town / Town



MISCELLANEOUS INFORMATION



This publication is licensed under a Creative Commons Attribution 4.0 International License. This license allows others to redistribute this work non-commercially, as long as the original creator is credited and derivative product/s are licensed under identical terms.

Unless otherwise noted, copyright and any other intellectual property rights, if any, in this publication is owned by the Philippine Government. This publication should be attributed as: BSWM, 2022 SAFDZ Map Series.

Users noting errors or omissions in this publication are requested to inform the Bureau of Soils and Water Management.

SOURCES OF INFORMATION: Topographic information taken from NAMRIA Topographic Map at 1:50,000 scale. Land Resources Information and NPAAAD/SAFDZ from the Agricultural Land Management and Evaluation Division (ALMED) and Soils Survey Division (SSD). Land Use/Vegetation Cover are obtained from the Land Use System (FAO, 2015), Philippine Rice Information System (PRISM) (IRRI, 2015) OpenStreetMap (OSM) and Satellite Images from Google. The slope and elevation are generated from SRTM 30-meter spatial resolution.

Data analysis and compilation spearheaded by the ALMED with the technical support of the SSD.

These maps were produced through the Review/Updating of the NPAAAD and SAFDZ Project.

Map produced by the Geomatics and Soil Information Technology Division (GSITD).

Collaborating Agencies : Department of Agriculture Regional Field Offices (DA-RFOs) and other concerned Offices : Local Government Units (LGUs)

BERNARDO B. PASCUA
Chief, ALMED

GINA P. NILO, Ph.D.
Director, BSWM