



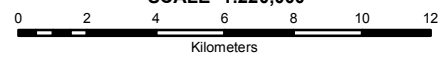
REPUBLIC OF THE PHILIPPINES
DEPARTMENT OF AGRICULTURE
**BUREAU OF SOILS AND
WATER MANAGEMENT**
Elliptical Road Cor. Visayas Ave., Diliman, Quezon City

**NUTRIENT STATUS MAP : PHOSPHOROUS
(Key Rice Areas)**

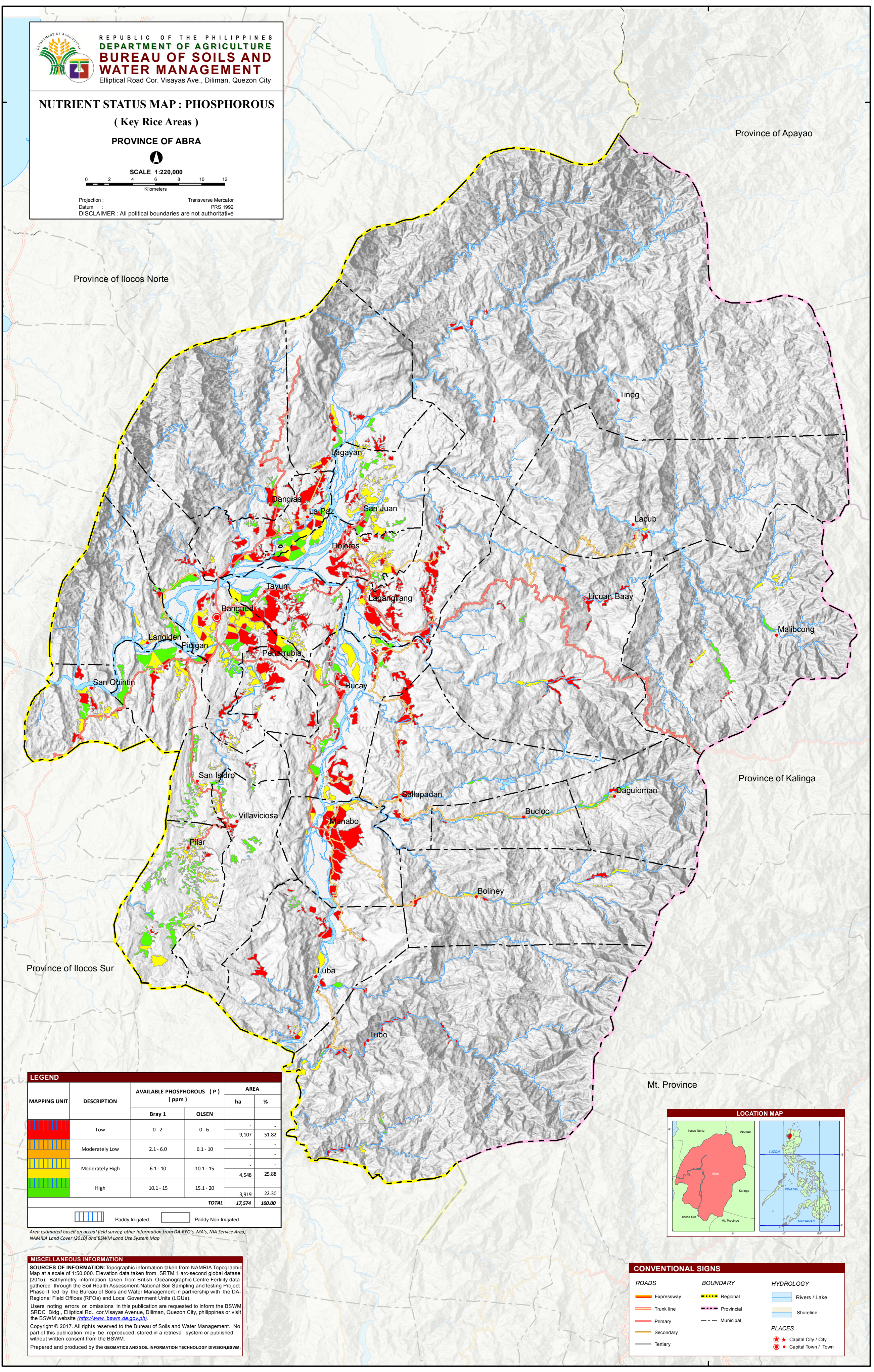
PROVINCE OF ABRA



SCALE 1:220,000



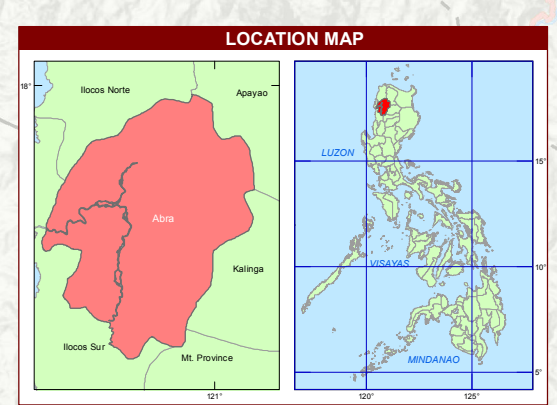
Projection : Transverse Mercator
Datum : PRS 1992
DISCLAIMER : All political boundaries are not authoritative



LEGEND				
MAPPING UNIT	DESCRIPTION	AVAILABLE PHOSPHOROUS (P) (ppm)		AREA
		Bray 1	OLSEN	ha %
	Low	0 - 2	0 - 6	- -
	Moderately Low	2.1 - 6.0	6.1 - 10	9,107 51.82
	Moderately High	6.1 - 10	10.1 - 15	- -
	High	10.1 - 15	15.1 - 20	4,548 25.88
				3,919 22.30
				TOTAL 17,574 100.00
	Paddy Irrigated			
	Paddy Non Irrigated			

Area estimated based on actual field survey, other information from DA-RFO's, MA's, NIA Service Area, NAMRIA Land Cover (2010) and BSWM Land Use System Map

MISCELLANEOUS INFORMATION
SOURCES OF INFORMATION: Topographic information taken from NAMRIA Topographic Map at a scale of 1:50,000. Elevation data taken from SRTM 1 arc-second global dataset (2015). Bathymetry information taken from British Oceanographic Centre Fertility data gathered through the Soil Health Assessment-National Soil Sampling and Testing Project Phase II led by the Bureau of Soils and Water Management in partnership with the DA-Regional Field Offices (RFOs) and Local Government Units (LGUs).
Users noting errors or omissions in this publication are requested to inform the BSWM SRDC Bldg., Elliptical Rd., cor Visayas Avenue, Diliman, Quezon City, Philippines or visit the BSWM website (<http://www.bswm.da.gov.ph>).
Copyright © 2017. All rights reserved to the Bureau of Soils and Water Management. No part of this publication may be reproduced, stored in a retrieval system or published without written consent from the BSWM.
Prepared and produced by the GEOMATICS AND SOIL INFORMATION TECHNOLOGY DIVISION, BSWM.



CONVENTIONAL SIGNS		
ROADS	BOUNDARY	HYDROLOGY
Expressway	Regional	Rivers / Lake
Trunk line	Provincial	Shoreline
Primary	Municipal	
Secondary		
Tertiary		
		PLACES
		Capital City / City
		Capital Town / Town