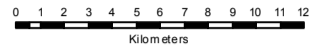




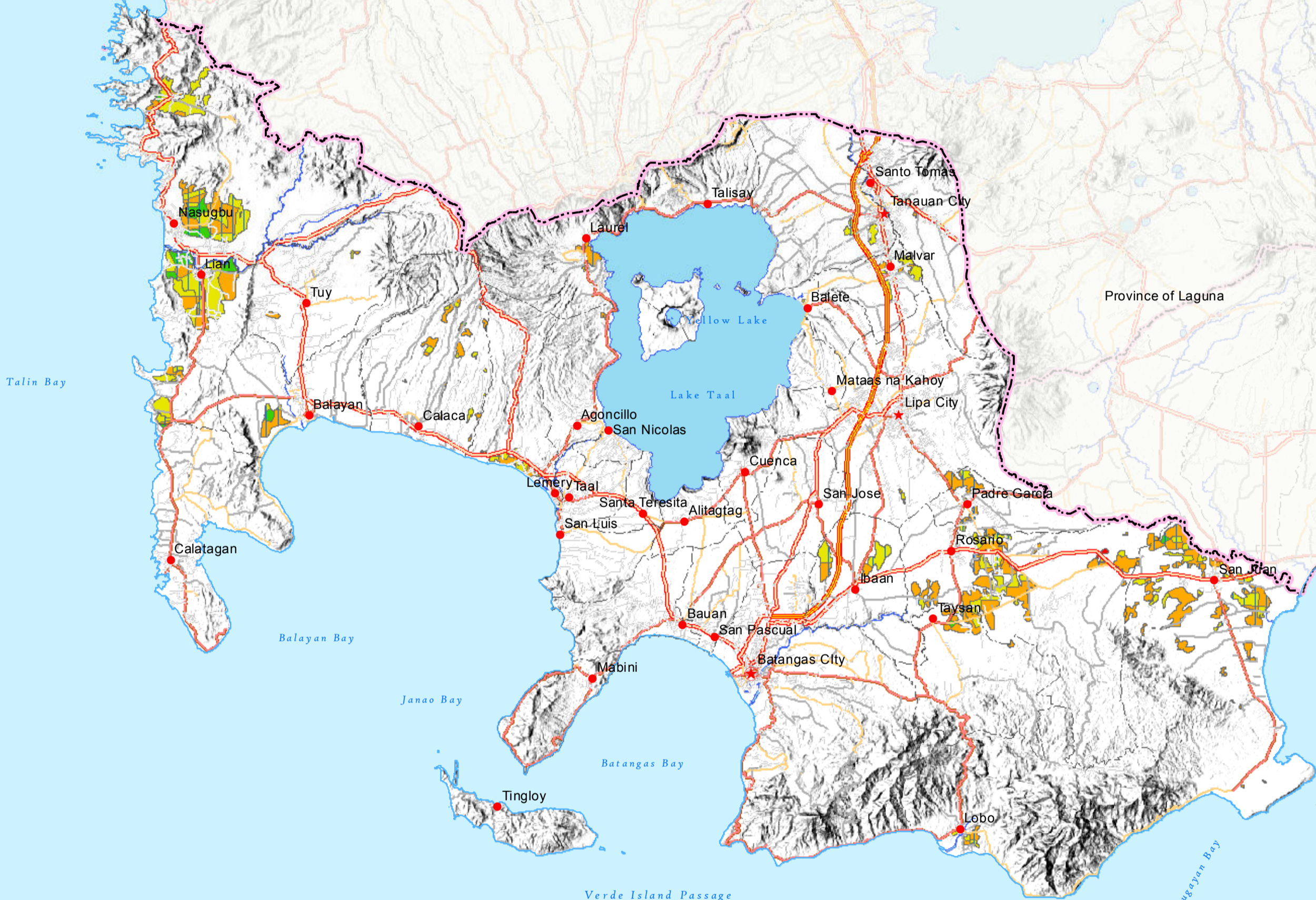
REPUBLIC OF THE PHILIPPINES
DEPARTMENT OF AGRICULTURE
BUREAU OF SOILS AND
WATER MANAGEMENT
 Elliptical Road Cor. Visayas Ave., Diliman, Quezon City

SOIL FERTILITY MAP
 (Key Rice Areas)
PROVINCE OF BATANGAS

SCALE 1:315,000



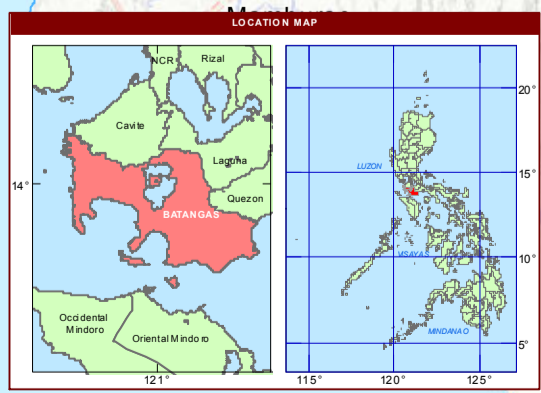
Projection : Transverse Mercator
 Datum : PRS 1992
 DISCLAIMER : All political boundaries are not authoritative



MAPPING UNIT	DESCRIPTION	AREA	
		ha	%
Low	[Red]	12	0.09
		18	0.14
Moderately Low	[Orange]	3,246	25.08
		3,554	27.46
Moderately High	[Yellow]	2,379	18.38
		3,026	23.38
High	[Green]	569	4.40
		139	1.07
TOTAL		12,943	100.00

[Blue hatched] Paddy Irrigated [White] Paddy Non-Irrigated

Area estimated based on field survey, other information from DA-RFO's, MA's, NIA Service Area, NAMRIA Land Cover (2010), and BSWM Land Use System Map.



CONVENTIONAL SIGNS		
ROADS	BOUNDARY	HYDROLOGY
[Orange line] Expressway	[Yellow dashed line] Regional	[Blue line] Rivers / Lake
[Red line] Trunk line	[Purple dashed line] Provincial	[Blue line] Shore line
[Brown line] Primary	[Black dashed line] Municipal	PLACES
[Grey line] Tertiary		[Red star] Capital City / City
		[Red circle] Capital Town / Town

MISCELLANEOUS INFORMATION
SOURCES OF INFORMATION: Topographic information taken from NAMRIA Topographic Map at a scale of 1:50,000. Elevation data taken from SRTM 1 arc-second global data set (2015). Bathymetry information taken from British Oceanographic Centre Fertility data gathered through the Soil Health Assessment National Soil Sampling and Testing Project Phase II led by the Bureau of Soils and Water Management in partnership with the DA-Regional Field Offices (RFOs) and Local Government Units (LGUs).
 Users noting errors or omissions in this publication are requested to inform the BSWM, SRDC Bldg., Elliptical Rd., cor. Visayas Avenue, Diliman, Quezon City, Philippines or visit the BSWM website (<http://www.bswm.dag.gov.ph>).
 Copyright © 2017. All rights reserved to the Bureau of Soils and Water Management. No part of this publication may be reproduced, stored in a retrieval system or published without written consent from the BSWM.
 Prepared and produced by the GEOMATICS AND SOIL INFORMATION TECHNOLOGY DIVISION, BSWM.