



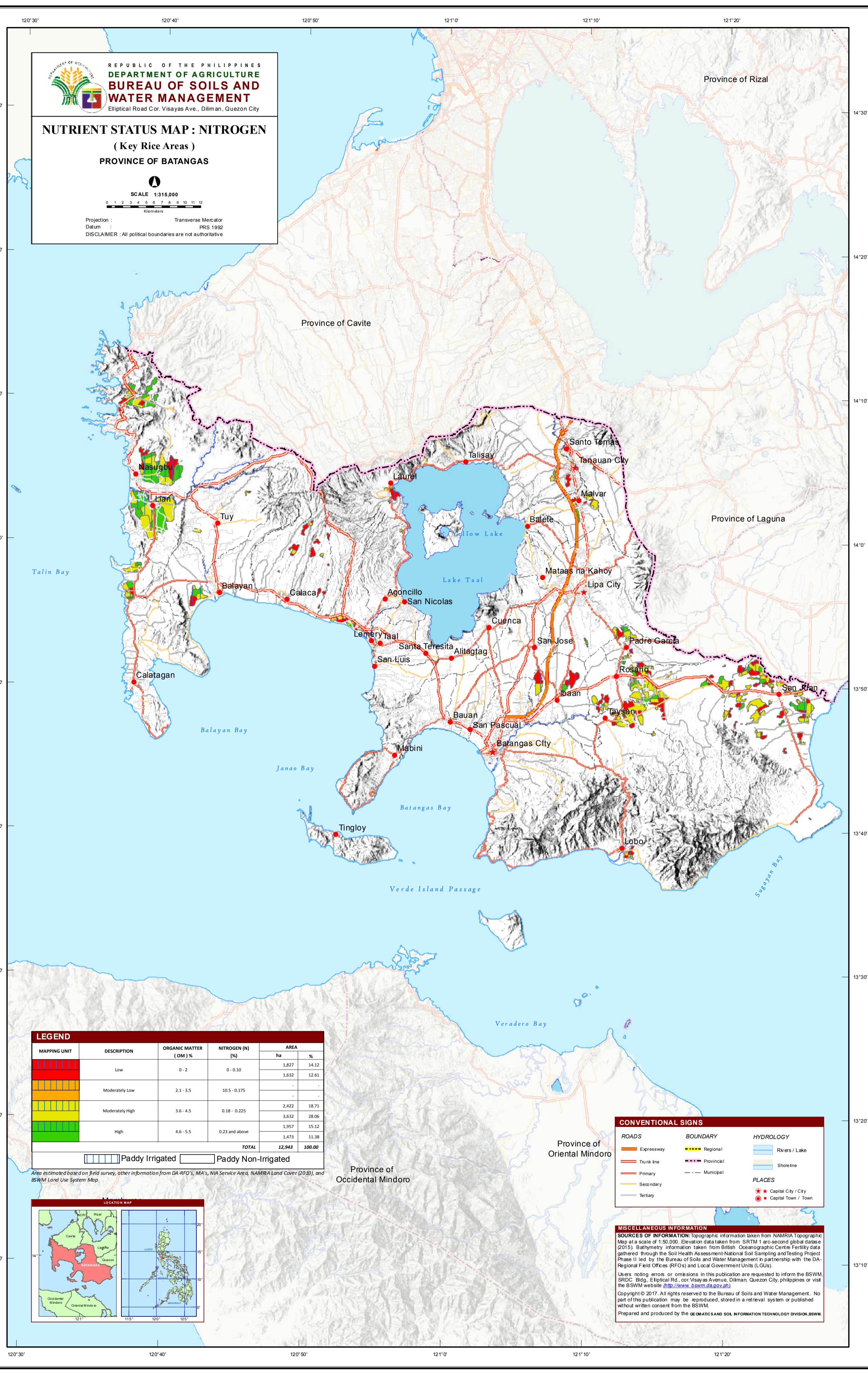
REPUBLIC OF THE PHILIPPINES  
**DEPARTMENT OF AGRICULTURE**  
**BUREAU OF SOILS AND**  
**WATER MANAGEMENT**  
 Elliptical Road Cor. Visayas Ave., Diliman, Quezon City

**NUTRIENT STATUS MAP : NITROGEN**  
 ( Key Rice Areas )  
**PROVINCE OF BATANGAS**

SCALE 1:315,000



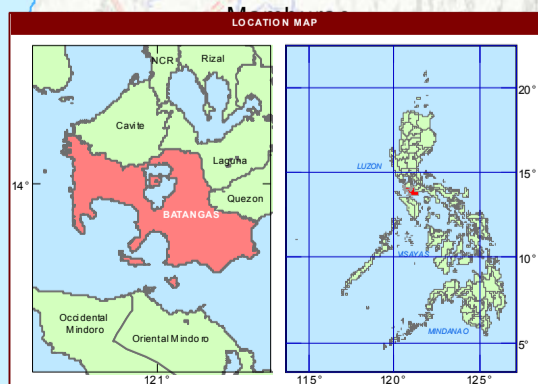
Projection : Transverse Mercator  
 Datum : PRS 1992  
 DISCLAIMER : All political boundaries are not authoritative



MAPPING UNIT	DESCRIPTION	ORGANIC MATTER (OM) %	NITROGEN (N) (%)	AREA	
				ha	%
Low		0 - 2	0 - 0.10	1,827	14.12
				1,632	12.61
Moderately Low		2.1 - 3.5	10.5 - 0.175	-	-
				-	-
Moderately High		3.6 - 4.5	0.18 - 0.225	2,422	18.71
				3,632	28.06
High		4.6 - 5.5	0.23 and above	1,957	15.12
				1,473	11.38
<b>TOTAL</b>				<b>12,943</b>	<b>100.00</b>

Paddy Irrigated   
 Paddy Non-Irrigated

Area estimated based on field survey, other information from DA-RFO's, MA's, NIA Service Area, NAMRIA Land Cover (2010), and BSWM Land Use System Map.



CONVENTIONAL SIGNS		
<b>ROADS</b>	<b>BOUNDARY</b>	<b>HYDROLOGY</b>
Expressway	Regional	Rivers / Lake
Trunk line	Provincial	Shore line
Primary	Municipal	<b>PLACES</b>
Secondary		Capital City / City
Tertiary		Capital Town / Town

**MISCELLANEOUS INFORMATION**  
**SOURCES OF INFORMATION:** Topographic information taken from NAMRIA Topographic Map at a scale of 1:50,000. Elevation data taken from SRTM 1 arc-second global data set (2015). Bathymetry information taken from British Oceanographic Centre Ferry data gathered through the Soil Health Assessment-National Soil Sampling and Testing Project Phase II led by the Bureau of Soils and Water Management in partnership with the DA-Regional Field Offices (RFOs) and Local Government Units (LGUs).  
 Users noting errors or omissions in this publication are requested to inform the BSWM, SRDC Bldg., Elliptical Rd., cor. Visayas Avenue, Diliman, Quezon City, Philippines or visit the BSWM website (<http://www.bswm.dag.gov.ph>).  
 Copyright © 2017. All rights reserved to the Bureau of Soils and Water Management. No part of this publication may be reproduced, stored in a retrieval system or published without written consent from the BSWM.  
 Prepared and produced by the GEOMATICS AND SOIL INFORMATION TECHNOLOGY DIVISION, BSWM.