

**NUTRIENT STATUS MAP : PHOSPHOROUS  
( Key Rice Areas )**





**PROVINCE OF BENGUET**


SCALE 1:180,000

0 1 2 3 4 5 6 7 8 9  
Kilometers


Projection : Transverse Mercator  
Datum : PRS 1992  
DISCLAIMER : All political boundaries are not authoritative

**LEGEND**

MAPPING UNIT	DESCRIPTION	AVAILABLE PHOSPHOROUS ( P ) ( ppm )		AREA	
		Bray 1	OLSEN	ha	%
	Low	0 - 2	0 - 6	195	6.71
				1,891	65.07
	Moderately Low	2.1 - 6.0	6.1 - 10	-	-
				-	-
	Moderately High	6.1 - 10	10.1 - 15	27	0.93
				694	23.88
	High	10.1 - 15	15.1 - 20	-	-
				99	3.41
				TOTAL	

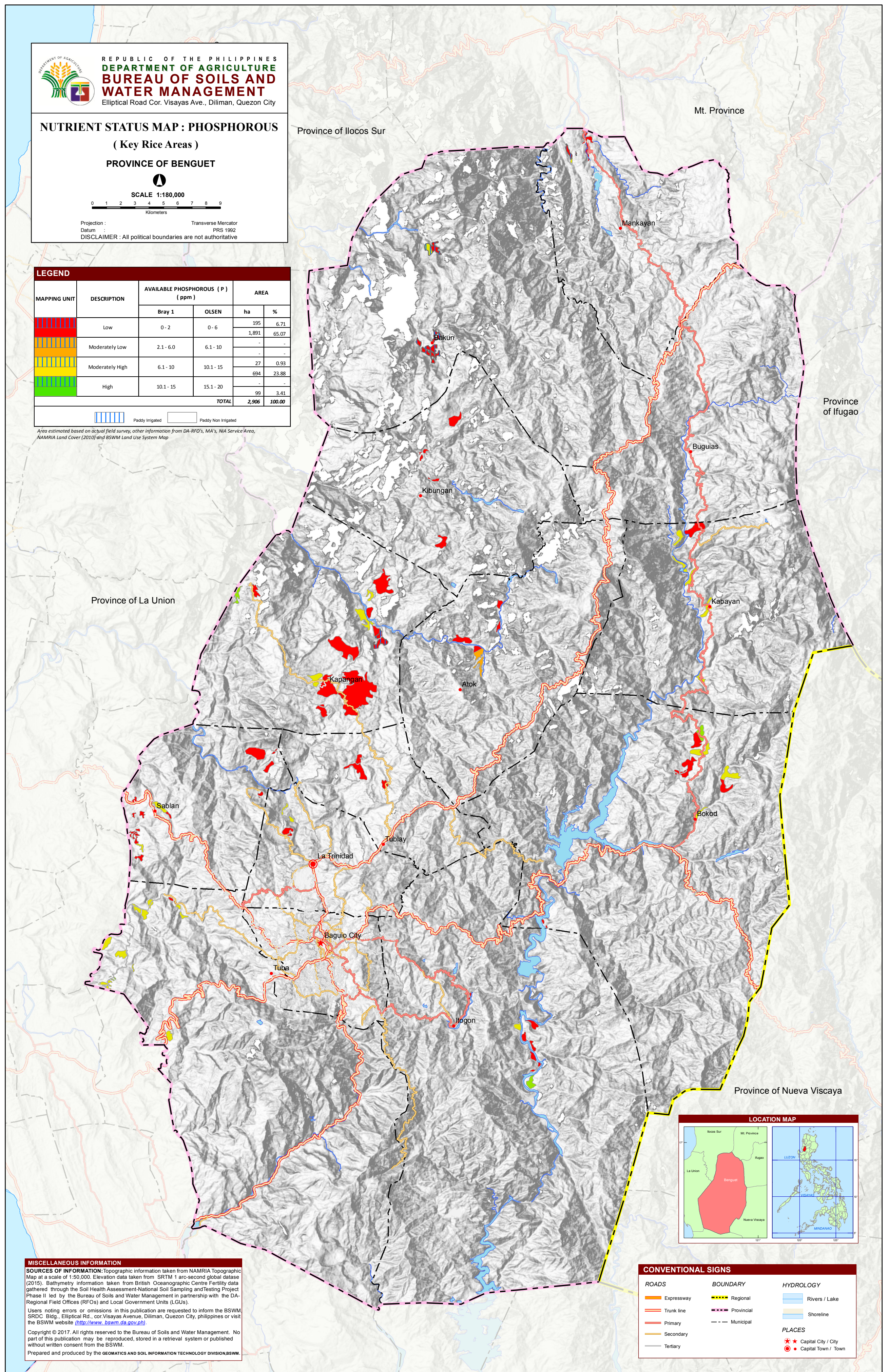


Paddy Irrigated



Paddy Non Irrigated

Paddy Irrigated Paddy Non Irrigated  
Area estimated based on actual field survey, other information from DA-RFO's, MA's, NIA Service Area,  
NAMRIA Land Cover (2010) and BSWM Land Use System Map



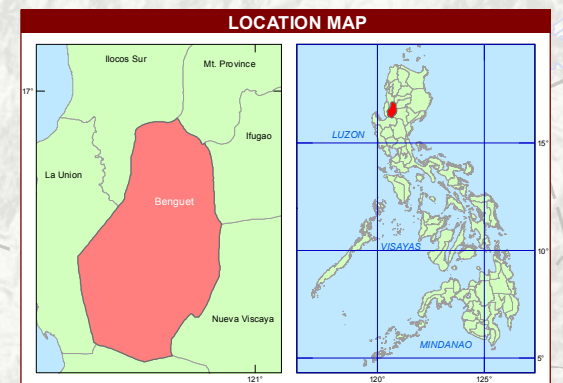
**MISCELLANEOUS INFORMATION**

**SOURCES OF INFORMATION:** Topographic information taken from NAMRIA Topographic Map at a scale of 1:50,000. Elevation data taken from SRTM 1 arc-second global dataset (2015). Bathymetry information taken from British Oceanographic Centre Fertility data gathered through the Soil Health Assessment-National Soil Sampling and Testing Project Phase II led by the Bureau of Soils and Water Management in partnership with the DA-Regional Field Offices (RFOs) and Local Government Units (LGUs).

Users noting errors or omissions in this publication are requested to inform the BSWM, SRDC Bldg., Elliptical Rd., cor. Visayas Avenue, Diliman, Quezon City, Philippines or visit the BSWM website (<http://www.bswm.da.gov.ph>).

Copyright © 2017. All rights reserved to the Bureau of Soils and Water Management. No part of this publication may be reproduced, stored in a retrieval system or published without written consent from the BSWM.

Prepared and produced by the GEOMATICS AND SOIL INFORMATION TECHNOLOGY DIVISION, BSWM.



**CONVENTIONAL SIGNS**

<b>ROADS</b>	<b>BOUNDARY</b>	<b>HYDROLOGY</b>
Expressway	Regional	Rivers / Lake
Trunk line	Provincial	Shoreline
Primary	Municipal	<b>PLACES</b>
Secondary		Capital City / City
Tertiary		Capital Town / Town