



Republic of the Philippines
Department of Agriculture
BUREAU OF SOILS AND WATER MANAGEMENT
SRDC Building Elliptical Road corner Visayas Avenue,
Diliman, Quezon City 1101
customers.center@bswm.da.gov.ph
Tel. no. (632) 8273-2474 local 3202

BSWM- BIDS AND AWARDS COMMITTEE
SUPPLEMENTAL BID BULLETIN NO. 3

**CONTRACT: SUPPLY, DELIVERY AND INSTALLATION OF VARIOUS FURNITURE AND
FIXTURES FOR CY 2024 - IB NO: BSWM 2024-05-040**

This Addendum is being issued in accordance with Section 22.5.2 of the IRR of RA 9184, to clarify and modify some provisions of the Bidding Document. **THIS SHALL FORM AN INTEGRAL PART OF THE BID DOCUMENT.**

AMENDMENTS OF THE BIDDING DOCUMENT:

ORIGINAL	AMENDED						
Section I. Invitation To Bid							
Lot 2 - Supply and Delivery of Various Office Furniture and Fixtures for BSWM in the amount Two Million Eight Hundred Forty-Six Thousand Seven Hundred Ninety-Eight Pesos (PhP 2,846,798.00)	Lot 2 - Supply and Delivery of Various Office Furniture and Fixtures for BSWM in the amount Two Million Six Hundred Seventy-Three Thousand Four Hundred Ninety-Eight Pesos (PhP 2,673,498.00)						
Section II. Instruction To Bidders							
<u>Clause 2.1</u> 2.1 The GOP through the source of funding as indicated below for CY 2023 and 2024 in the amount of: Lot 1 - PhP 4,632,350.00 Lot 2 - PhP 2,846,798.00	<u>Clause 2.1</u> The GOP through the source of funding as indicated below for CY 2023 and 2024 in the amount of: Lot 1 - PhP 4,632,350.00 Lot 2 - PhP 2,673,498.00						
	A complete set of Bidding Documents may be acquired by interested Bidders until July 29, 2024, 3:00PM from the given address and website and upon payment of the applicable fee for the Bidding Documents, pursuant to the latest Guidelines issued by the GPPB, in the amount of: <table><tr><th>LOT</th><th>BID DOCS COST</th></tr><tr><td>1</td><td>Php 5,000.00</td></tr><tr><td>2</td><td>Php 3,000.00</td></tr></table> <i>(Provided that the bidder was conducted a Site Inspection as stated in Bid Bulletin No. 1)</i>	LOT	BID DOCS COST	1	Php 5,000.00	2	Php 3,000.00
LOT	BID DOCS COST						
1	Php 5,000.00						
2	Php 3,000.00						



ORIGINAL	AMENDED
<u>Clause 16. Deadline for Submission of Bids:</u> ➤ July 18, 2024, 09:00AM <u>Clause 17. Opening and Preliminary Examination of Bids:</u> ➤ July 18, 2024, 09:30AM	<u>Clause 16. Deadline for Submission of Bids:</u> ➤ July 30, 2024, 09:00AM <u>Clause 17. Opening and Preliminary Examination of Bids:</u> ➤ July 30, 2024, 09:30AM
<u>Clause 9. Clarification and Amendment of Bidding Documents</u>	<u>Clause 9. Clarification and Amendment of Bidding Documents</u> ➤ Written clarifications may be submitted through the Bids and Awards Committee on or before July 19, 2024
Section VII. Technical Specifications	
	SECTION VI. TECHNICAL SPECIFICATIONS <ul style="list-style-type: none">• Please see revised technical specifications as part of this Bid Bulletin

CLARIFICATIONS	REMARKS
Clarification on Lot 1: Supply, Delivery, and Installation of Modular Partition With Tables, Chairs And Built-In Cabinet	The actual number/size of partitions to be installed will be based on the layout/floor area indicated in this bid bulletin (Annex D). Final layout shall be submitted by the winning bidder for approval of the End-User prior to installation.

For guidance and information of all concerned.

DENISE A. SOLANO
BAC Chairperson

SECTION VII. REVISED TECHNICAL SPECIFICATIONS

LOT 1 - SUPPLY, DELIVERY AND INSTALLATION OF MODULAR PARTITION WITH TABLES, CHAIRS AND BUILT-IN CABINET

Item No.	Item Description	Qty	Unit	Statement of Compliance
LOT 1- SUPPLY, DELIVERY AND INSTALLATION OF MODULAR PARTITION WITH TABLES, CHAIRS AND BUILT-IN CABINET				
1	Accounting Section - REG-2024-06-0921	1	lot	
	MODULAR PARTITION WITH BUILT-IN CABINETS			
	Partition specifications :			
	Partition Panel - 60MM (Laminated Glass)	3		
	size : 1200mm(W) x 2300mm(H)			
	60MM aluminum alloy frame, upper 600H clear glass, lower laminated panel			
	Partition Panel - 60MM (Laminated Glass)	2		
	size : 900mm(W) x 2300mm(H)			
	60MM aluminum alloy frame, upper 600H clear glass, lower laminated panel			
	Door (Laminated Glass)	1		
	size : 900mm(W) x 2300mm(H)			
	60MM aluminum alloy frame, upper 600H clear glass, lower laminated panel, with handle and lock			
	Partition Panel - 60MM (Full Laminated)	3		
	size : 1200mm(W) x 2300mm(H)			
	60MM aluminum alloy frame, full laminated panel			
	Partition Panel - 60MM (Full Laminated)	2		
	size : 900mm(W) x 2300mm(H)			
	60MM aluminum alloy frame, full laminated panel			
	Door (Full Laminated)	1		
	size : 900mm(W) x 2300mm(H)			
	60MM aluminum alloy frame, upper 600H clear glass, lower laminated panel, with handle and lock			
	Cabinet specifications :			
	General specifications :			
	Cold roll steel finish - 0.7mm; with 5 layers, open storage, laminated finish			
	(Cab1) size : 1000mm (L) x 500mm (W) x 2340mm (H)	2		
	(Cab2) size : 900mm (L) x 500mm (W) x 2340mm (H)	3		
	(Cab3) size : 860mm (L) x 500mm (W) x 2340mm (H)	1		
	(Cab4) size : 800mm (L) x 500mm (W) x 2340mm (H)	4		
2	Records Unit - REG-2024-06-0921	1	lot	
	Laminated Partition (3-5cm thick) with clear glass window and wireway			
	aluminum alloy frame,full laminated panel.			
	120mm (H) x 110mm (W)			
	120mm (H) x 80mm (W)			
	120mm (H) x 130mm (W)			

Item No.	Item Description	Qty	Unit	Statement of Compliance
	120mm (H) x 120mm (W)			
	120mm (H) x 60mm (W)			
	Laminated Tabletop 2mm thick (5 units)			
	76mm (H) x 100mm (L) x 60mm (W)			
	Laminated Countertop 2mm thick			
	290mm (L) x 60mm (W)			
3	Laboratory Services Division - NSHP-2024-06-0922	1	lot	
	Laminated Glass Partition	2	units	
	5-6cm laminated partition with clear glass 1450 (L) x 1200(H) x 50-60mm (thk)			
	Laminated Glass Partition	2	units	
	5-6cm laminated partition with clear glass 1500mm(L) x 1200mm(H) x 50-60mm (thk)			
	Laminated Glass Partition	6	units	
	5-6cm laminated partition with clear glass 700mm (L) x 1200mm(H) x 50-60mm (thk)			
	Laminated Glass Partition	2	units	
	5-6cm laminated partition with clear glass 600mm (L) x 1200mm(H) x 50-60mm (thk)			
4	Property Management Unit - REG-CONTINUING - PR NO. 2024-04-0711	1	lot	
	Inclusive of the following:			
	13 Executive chair (Lumbar support,Gaslift with armrest adjustment)			
	2 Executive chair (Lumbar support,Gaslift with armrest and headrest adjustment)			
	2 melamine finished main table(with grommets) with side table (for unit head)			
	13 melamine finished main table(with grommets) with side table (for staff)			
	15 mobile pedestal with lock			
	1 round melamine conference table (Office of the Head)			
	1 mesh visitor chair			
	4 visitor chair (medium-back)			
	<i>Note: Aluminum partition with glass, upholstered in two tone fabric, Laminated with wire management</i>			
5	Procurement Management Section - NSHP-2024-04-0711	1	lot	
	Inclusive of the following:			
	12 executive chairs, with gaslift and armrest (medium-back)			
	1 executive chair (high-back),black, with gaslift and armrest			
	1 executive table with side table, wooden, atleast 1800 x 800 / 1200 x 400			

Item No.	Item Description	Qty	Unit	Statement of Compliance
	3 melamine finished main table (free-standing) with side table , with grommet, (for manager's area)			
	9melamine finished main table (free-standing) with side table (for staff), 1300x600			
	1 Oval-conference table, melamine finish, 1800 x 800 (Office of the Head)			
	6 mesh conference office chairs (for the conference area)			
	2 free-standing table, metal legs (Pantry area)			
	Partition: Aluminum 468 partition with glass, Laminated with wire management			
	<i>Note: No. and size of partitions will depend on the actual measurement</i>			
6	Building & Grounds Administration Unit - NSHP-2024-04-0711	1	lot	
	Modular Office partition for Stock room and Pantry			
	60MM Partition panel (Full Laminated)			
	Size: 1400W*2100H			
	60MM aluminum alloy frame,full laminated panel.			
	60MM Partition panel (Full Laminated)			
	Size: 1000W*2100H			
	60MM aluminum alloy frame,full laminated panel.			
	60MM Partition panel (Full Laminated)			
	Size: 940W*2100H			
	60MM aluminum alloy frame,full laminated panel.			
	60MM Partition panel (Full Laminated)			
	Size: 900W*2100H			
	60MM aluminum alloy frame,full laminated panel.			
	60MM Partition panel (Full Laminated)			
	Size: 850W*2100H			
	60MM aluminum alloy frame,full laminated panel.			
	Door (Full Laminated)			
	Size: 900W*2100H			
	60MM aluminum alloy frame,full laminated panel,with handle and lock.			
	Modular Office partition for BGA Head Office			
	60MM Partition panel (Full Laminated)			
	Size: 1400W*2100H			
	60MM aluminum alloy frame,full laminated panel.			
	60MM Partition panel (Full Laminated)			
	Size: 900W*2100H			
	60MM aluminum alloy frame,full laminated panel.			
	60MM Full smoke (frosted glass)			
	Size: 490*2100H			
	60MM aluminum alloy frame,full Full smoke frosted glass.			
	<i>(please see attached layout and measurement)</i>			
	Staff Table			
	4 L- shape Office Tables			

Item No.	Item Description	Qty	Unit	Statement of Compliance
	<i>Note: Measurement and design of office table shall be upon approval of the end-user</i>			
7	Cashier Unit - NSHP-2024-04-0711	1	lot	
	Modular Office partition with desk table			
	<i>(please see attached layout and measurement)</i>			
	Inclusive the following :			
	6 pcs. desk table with pedestal drawer (metal, movable, 3 drawer) each table			
	Partition : partition with glass			

LOT 2 - SUPPLY, FABRICATION, DELIVERY AND INSTALLATION OF VARIOUS FURNITURE AND FIXTURES

Item No.	Division/Unit/Fund/PR #	Item Description	Qty	Statement of Compliance
1	PROPERTY MANAGEMENT UNIT-REG-2024-06-0921	Filing Cabinet Heavy Duty metal cabinet, all welded steel with rubber footing, Lateral type, 3 layer, with door lock mechanism (Stock Room) Gauge: 22" Dimension: at least D16.5" x 33"H x 35"W	5	
2	PROPERTY MANAGEMENT UNIT-REG-2024-06-0921	Filing Cabinet -Heavy Duty metal cabinet, all welded steel with rubber footing, Lateral type, open shelves, 3 layer Gauge: 24" Dimension: at least D16.5" x 33"H x 35"W	3	
3	PROPERTY MANAGEMENT UNIT-REG-2024-06-0921 (5) RECORDS UNIT-REG-2024-06-0921 (1)	Foldable Table Dimension: - approx. L72" x W18" x H29", black Hard Plastic Top, Metal Legs	6	
5	PROPERTY MANAGEMENT UNIT-REG-2024-06-0921	Locker 15 Door, All metal, Key-Lock Mechanism Dimension: At least W90X40XH185 CM	2	
6	PROPERTY MANAGEMENT UNIT-REG-2024-06-0921	Wall mounted cabinet with key holder with key lock mechanism Capacity: 30 keys Dimension: At least 8" x 15" Material: Solid/Heavy duty Steel Construction	1	

Item No.	Division/Unit/Fund/PR #	Item Description	Qty	Statement of Compliance
7	PROPERTY MANAGEMENT UNIT-REG-2024-06-0921	Wall mounted cabinet - Fabricated Heavy duty metal cabinet, all welded steel with perforated panel for hooks; with lock mechanism Wall Mount Storage Cabinet for tools with key mechanism Metal Cupboard Features: perforated panels for hooks capable for tools organization Compartments: 3 compartments with 3 adjustable layer Material: Metal steel Gauge: 24 Dimension: atleast L38"xH26"xW12"	1	
8	CASHIER UNIT-REG-2024-06-0921	Storage Steel Cabinet Heavy Duty, Metal Locker Swing Door Metal Cabinet Size: At least 900w x 450d x 1802h 5 adjustable Shelves Color: Grey Lock type: Mastered plastic flush lock with 3 keys. Manufactured with at least 0.6 mm thick sheet steel. Epoxy powder coated for more durability. Each shelf can carry load of 30 Kgs uniformly distributed load.	2	
9	PROPERTY MANAGEMENT UNIT-REG-2024-06-0921 (12) RECORDS UNIT-REG-2024-06-0921 (2) LSD-NSHP-2024-06-0922 (12)	Visitors Chair Specification: Dimension: at least 440 mm L x 575 mm W x 828 mm H Mid Back Leather Finish Chair Sled Legs in high quality steel Chrome Finish	26	
10	RECORDS UNIT-REG-2024-06-0921 (6) PERSONNEL SECTION-REG-2024-06-0921 (6)	Mobile Pedestal Drawer Color: metal gray, movable with wheels with 3 Drawers including 1 Central Lock, 1 Pen Tray and 1 File Divider Dimensions: atleast 40(W) x 56.5(D) x 65.5(H) cm Weight: At least 14kgs 5 Swivel Castors built for ease on mobility	12	

Item No.	Division/Unit/Fund/PR #	Item Description	Qty	Statement of Compliance
11	CASHIER UNIT-REG-2024-06-0921 (6) PERSONNEL SECTION-REG-2024-06-0921 (3)	Office chair , with armrest, swivel chair Color: Black Product Dimensions at least: 26"D x 21.5"W x 43"H Special Feature: Adjustable Height, Ergonomic, Swivel, Rolling, Seat Lock Arm Style: Flip-up Arm. All specs at least: Seat Back Interior Height: 22.5 Inches Seat Height: 21.5 Inches Seat Depth: 21.5 Inches Arm Height: 28.5 Inches Item Weight: 12.6 pounds Weight Capacity: 100kgs	9	
12	RECORDS UNIT-REG-2024-06-0921 (1) WRMD-ESETS-RICE CONTINUING - PR NO. 2024-0865 (14) CASHIER UNIT-REG-2024-06-0921 (1)	Office Chair atleast W62 x D60 x H111-121cm Nylon plastic covered with mesh fabric, Plywood frame with recycle foam covered with polyester fabric, Polypropylene (Pp) Plastic	16	
13	PROPERTY MANAGEMENT UNIT-REG-2024-06-0921 (2) GSITD-REG-2024-05-0766 (1)	Reception Sofa Seating Capacity: 4 Measurements: atleast W243xD75xH88cm Frame : Plywood & Gemelina wood Fixed Seat and Back Cushion:Polyurethane foam Fabric: 100% Polyester Leg: Plastic leg in chrome finish Color: Black	3	
14	WRMD-ESETS-RICE CONTINUING - PR NO. 2024-0865	Conference Chairs Color: Black or Grey Bearing Capacity: 100 kg minimum Sitting width: 65cm minimum Sitting depth: 55cm minumum Frame and leg: Metal tube in chrome plating finish. Seat & Backrest: foam covered with Mesh fabric. Armrest: Polypropylene (Pp) Plastic, With anti-slip rubber footing	2	
15	DO- - PR NO. 2024-06-1048	LOT Reception Sofa Capacity: 4 Color; Black Length (cm) 167 Width (cm) 70 Height (cm) 84 Net Weight (kg) 40	4	

Item No.	Division/Unit/Fund/PR #	Item Description	Qty	Statement of Compliance
		Collapsible Conference Table Foldable with 6 seaters Height: (cm) 80 Width (cm) 75 Length (cm) 40	20	
		Conference Chair Armless Color: Black Fabric: leather	40	
		Executive Chair Color: Black or Gray with movable armrest	10	
16	PROPERTY MANAGEMENT UNIT-REG-2024-06-0921	Roller Blinds Color Light Grey, Blackout Built-in spring system. Including installation 2.03H x 1.44W (in meters) - 4 pcs. 1.90H x .96W (in meters) - 1 pc. 2.03H x 2.79 (in meters) - 1 pc	1	
17	PERSONNEL SECTION-REG-2024-06-0921	Roller blinds Color: Light Grey, Blackout, Combi Shade blinds can block sunlight and harmful UV. Size: W-1.40 meter X H-2.0 meter (8 pcs) Size: W-1.13 meter X H-1.15meter (1pc) Built-in spring system. The rate of raising can be adjustable. Including material (e.g. brackets and screws) Including installation	1	
18	PROCUREMENT MANAGEMENT SECTION-REG-2024-06-0921	Roller Blinds Color: Light Grey, Blackout Shade blinds can block sunlight and harmful UV. Built-in spring system. The rate of raising can be adjustable. Including material (e.g. brackets and screws) Including installation	1	
		1.47m x 2.08m	1	
		2.29m x 2.08m	1	
		2.12m x 2.08m	1	
		1.49m x 2.08m	1	
		1.47m x 2.08m	1	
		1.50m x 2.08m	1	
		1.50m x 2.08m	1	
		1.41m x 2.08m	1	
		1.38m x 2.08m	1	
		1.01m x 2.08m	2	
		0.036m x 2.08m	2	

Item No.	Division/Unit/Fund/PR #	Item Description	Qty	Statement of Compliance
19	RECORDS UNIT-REG-2024-06-092	Roller Blinds Color: Light Grey, Blackout Shade blinds can block sunlight and harmful UV. Built-in spring system. The rate of raising can be adjustable. Including material (e.g. brackets and screws) Including installation	1	
		Size: 1.47955 m X 2.032 m (AREA: 32.36)	1	
		Size: 1.4859 m X 2.032 m (AREA: 32.50)	1	
		Size: 1.49225 m X 2.032 m (AREA: 32.64)	1	
		Size: 1.4732 m X 2.032 m (AREA: 32.22)	1	
		TOTAL AREA: 129.72		
		Combination Black Out Mirage		
20	LSD-NSHP-2024-06-0922	Roller Blinds (Directors Office Receiving Area) Color Light Grey, Blackout "30% Polyester+70% PVC,high quality plastic chain, All Dimensions Are The Required Length Of Fabric -Right Mechanism All Dimensions Are The Required Length Of Fabric -Left Mechanism"	1	
		1.820 x 3.0m	1	
		1.340 x 3.0m	1	
		1.330 x 3.0m	1	
		1.380 x 3.0m	1	
21	LSD-NSHP-2024-06-0922	Roller Blinds (Directors Office Conference Area) Color Light Grey, Blackout "30% Polyester+70% PVC, high quality plastic chain, All Dimensions Are The Required Length Of Fabric -Right Mechanism All Dimensions Are The Required Length Of Fabric -Left Mechanism"	1	
		1.430 x 2.150m	1	
		1.480 x 2.150m	1	
		1.460 x 2.150m	1	
		1.450 x 2.150m	1	
		1.380 x 2.20m	1	
		1.350 x 2.20m	1	
22	PROCUREMENT MANAGEMENT SECTION-REG-2024-06-0921	6 Shelves Slotted Angle Metal Rack Size: 72 x 42 x 15 Inch Storage Rack unit (22 Gauge shelf 16 gauge angle) (Ivory) Luggage Rack	7	
23	LSD-NSHP-2024-06-0922 (Director's Office)	Display Rack 25mm thk laminated finish mfc cabinet with adjustable shelves. Swing door with clear glass Size: 700mm (L) x 470mm(D) x 2200mm (H)	2	

Item No.	Division/Unit/Fund/PR #	Item Description	Qty	Statement of Compliance
24	LSD-NSHP-2024-06-0922 (Director's Office)	L-Shape Table with Mobile Pedestal and Drawer 25mm thk laminated table mfc with drawer with lock and mobile cabinet with centralized lock, Standard laminated mobile pedestal exclusive pen tray and file drawer MAIN TABLE at least 1500mm (L) x 600mm D x 750mm (H) SIDE RETURN 1100mm (L) x 450(D) x 750 (h)	2	
25	LSD-NSHP-2024-06-0922 (Director's Office)	L-Shape Table with Mobile Pedestal and Drawer 25mm thk laminated table mfc with drawer with lock and mobile cabinet with centralized lock, Standard laminated mobile pedestal exclusive pen tray and file drawer MAIN TABLE at least 1450mm (L) x 600mm D x 750mm (H) SIDE RETURN 900mm (L) x 450(D) x 750 (h)	4	
26	LSD-NSHP-2024-06-0922	Laboratory Chairs Chair Type: Lab Chair Wheeled, Stainless Steel Base or chrome plated Height Adjustable Back Adjustable: Yes Arms Adjustable: No Colour: Black Seat Material: Polyurethane with foam Weight Capacity: up to 100 kg	70	
27	LSD-NSHP-2024-06-0922	Laboratory Glasswares Mobile Drying Cart Material: SUS316 stainless steel with caster wheel	1	
		Size: 1000mm (L) x 400mm D x 1000mm (H)	10	
		Size: 1000mm (L) x 400mm D x 1500mm (H)	5	
		Size: 1300mm (L) x 400mm D x 1000mm (H)	4	
28	LSD-NSHP-2024-06-0922	Sterilizer Canister for Petri Dishes Polished stainless-steel or any material that can withstand 121C temperature and 15psi pressure can hold 10 to 18 glass Petri dishes size (diameter: 100mm; height: 10 to 15mm)	15	
29	LSD-NSHP-2024-06-0922	Pegged Drying Rack for Laboratory Glasswares minimum of 52 Pegs PP Material Glassware Drying Rack Free-Standing Detachable Pegs Lab Glass Drying Rack for Laboratory Utensil"	3	

Item No.	Division/Unit/Fund/PR #	Item Description	Qty	Statement of Compliance
30	LSD-NSHP-2024-06-0922	Laboratory Shoe Rack stainless steel material 4 layers	4	
31	LSD-NSHP-2024-06-0922	Accessory hook for laboratory gown stainless steel material 6 or more hooks	4	
32	LSD-NSHP-2024-06-0922	Automatic Hand Sterilizer/Alcohol Dispenser Capacity: 1600 ML Installation: Wall Mounted Induction: Infrared Dosage: 0.8 - 1.2 ML per spray Battery Operated: 4x AA Battery Power Output: Supports AC/DC Input: 5V DC	5	

LOT 1 - SUPPLY, DELIVERY AND INSTALLATION OF MODULAR PARTITION WITH TABLES, CHAIRS AND BUILT-IN CABINET

Item No.	Item Description	Qty	Unit	Unit Cost	Total Cost
LOT1- SUPPLY, DELIVERY AND INSTALLATION OF MODULAR PARTITION WITH TABLES, CHAIRS AND BUILT-IN CABINET					
1	Accounting Section - REG-2024-06-0921	1	lot	762,500.00	762,500.00
	MODULAR PARTITION WITH BUILT-IN CABINETS				
	Partition specifications :				
	Partition Panel - 60MM (Laminated Glass)	3			
	size : 1200mm(W) x 2300mm(H)				
	60MM aluminum alloy frame, upper 600H clear glass, lower laminated panel				
	Partition Panel - 60MM (Laminated Glass)	2			
	size : 900mm(W) x 2300mm(H)				
	60MM aluminum alloy frame, upper 600H clear glass, lower laminated panel				
	Door (Laminated Glass)	1			
	size : 900mm(W) x 2300mm(H)				
	60MM aluminum alloy frame, upper 600H clear glass, lower laminated panel, with handle and lock				
	Partition Panel - 60MM (Full Laminated)	3			
	size : 1200mm(W) x 2300mm(H)				
	60MM aluminum alloy frame, full laminated panel				
	Partition Panel - 60MM (Full Laminated)	2			
	size : 900mm(W) x 2300mm(H)				
	60MM aluminum alloy frame, full laminated panel				
	Door (Full Laminated)	1			
	size : 900mm(W) x 2300mm(H)				
	60MM aluminum alloy frame, upper 600H clear glass, lower laminated panel, with handle and lock				
	Cabinet specifications :				
	General specifications :				
	Cold roll steel finish - 0.7mm; with 5 layers, open storage, laminated finish				
	(Cab1) size : 1000mm (L) x 500mm (W) x 2340mm (H)	2			
	(Cab2) size : 900mm (L) x 500mm (W) x 2340mm (H)	3			
	(Cab3) size : 860mm (L) x 500mm (W) x 2340mm (H)	1			
	(Cab4) size : 800mm (L) x 500mm (W) x 2340mm (H)	4			
2	Records Unit - REG-2024-06-0921	1	lot	800,000.00	800,000.00
	Laminated Partition (3-5cm thick) with clear glass window and wireway				
	aluminum alloy frame,full laminated panel.				
	120mm (H) x 110mm (W)				
	120mm (H) x 80mm (W)				
	120mm (H) x 130mm (W)				
	120mm (H) x 120mm (W)				
	120mm (H) x 60mm (W)				

	Laminated Tabletop 2mm thick (5 units)				
	76mm (H) x 100mm (L) x 60mm (W)				
	Laminated Countertop 2mm thick				
	290mm (L) x 60mm (W)				
3	Laboratory Services Division - NSHP-2024-06-0922	1	lot	118,000.00	118,000.00
	Laminated Glass Partition	2	units		
	<i>5-6cm laminated partition with clear glass 1450 (L) x 1200(H) x 50-60mm (thk)</i>				
	Laminated Glass Partition	2	units		
	<i>5-6cm laminated partition with clear glass 1500mm(L) x 1200mm(H) x 50-60mm (thk)</i>				
	Laminated Glass Partition	6	units		
	<i>5-6cm laminated partition with clear glass 700mm (L) x 1200mm(H) x 50-60mm (thk)</i>				
	Laminated Glass Partition	2	units		
	<i>5-6cm laminated partition with clear glass 600mm (L) x 1200mm(H) x 50-60mm (thk)</i>				
4	Property Management Unit - REG-CONTINUING - PR NO. 2024-04-0711	1	lot	850,000.00	850,000.00
	Inclusive of the following:				
	13 Executive chair (Lumbar support,Gaslift with armrest adjustment)				
	2 Executive chair (Lumbar support,Gaslift with armrest and headrest adjustment)				
	2 melamine finished main table(with grommets) with side table (for unit head)				
	13 melamine finished main table(with grommets) with side table (for staff)				
	15 mobile pedestal with lock				
	1 round melamine conference table (Office of the Head)				
	1 mesh visitor chair				
	4 visitor chair (medium-back)				
	<i>Note: Aluminum partition with glass, upholstered in two tone fabric, Laminated with wire management</i>				
5	Procurement Management Section - NSHP-2024-04-0711	1	lot	1,200,000.00	1,200,000.00
	Inclusive of the following:				
	12 executive chairs, with gaslift and armrest (medium-back)				
	1 executive chair (high-back),black, with gaslift and armrest				
	1 executive table with side table, wooden, 1800 x 800 / 1200 x 400 atleast				
	3 melamine finished main table (free-standing) with side table , with grommet, (for manager's area)				
	11melamine finished main table (free-standing) with side table (for staff), 1300x600				

	1 Oval-conference table, melamine finish, 1800 x 800 (Office of the Head)				
	6 mesh conference office chairs (for the conference area)				
	2 free-standing table, metal legs (Pantry area)				
	Partition: Aluminum 468 partition with glass, Laminated with wire management				
	<i>Note: No. of partitions will depend on the actual measurement</i>				
6	Building & Grounds Administration Unit - NSHP-2024-04-0711	1	lot	301,850.00	301,850.00
	Modular Office partition for Stock room and Pantry				
	60MM Partition panel (Full Laminated)				
	Size: 1400W*2100H				
	60MM aluminum alloy frame,full laminated panel.				
	60MM Partition panel (Full Laminated)				
	Size: 1000W*2100H				
	60MM aluminum alloy frame,full laminated panel.				
	60MM Partition panel (Full Laminated)				
	Size: 940W*2100H				
	60MM aluminum alloy frame,full laminated panel.				
	60MM Partition panel (Full Laminated)				
	Size: 900W*2100H				
	60MM aluminum alloy frame,full laminated panel.				
	60MM Partition panel (Full Laminated)				
	Size: 850W*2100H				
	60MM aluminum alloy frame,full laminated panel.				
	Door (Full Laminated)				
	Size: 900W*2100H				
	60MM aluminum alloy frame,full laminated panel,with handle and lock.				
	Modular Office partition for BGA Head Office				
	60MM Partition panel (Full Laminated)				
	Size: 1400W*2100H				
	60MM aluminum alloy frame,full laminated panel.				
	60MM Partition panel (Full Laminated)				
	Size: 900W*2100H				
	60MM aluminum alloy frame,full laminated panel.				
	60MM Full smoke (frosted glass)				
	Size: 490*2100H				
	60MM aluminum alloy frame,full Full smoke frosted glass.				
	<i>(please see attached layout and measurement)</i>				
	Staff Table				
	4 L- shape Office Tables				
	<i>Note: Measurement and design of office table shall be upon approval of the end-user</i>				
7	Cashier Unit - NSHP-2024-04-0711	1	lot	600,000.00	600,000.00
	Modular Office partition with desk table				

	<i>(please see attached layout and measurement)</i>				
	Inclusive the following :				
	6 pcs. desk table with pedestal drawer (metal, movable, 3 drawer) each table				
	Partition : partition with glass				
GRAND TOTAL					4,632,350.00

LOT 2 - SUPPLY, FABRICATION, DELIVERY AND INSTALLATION OF VARIOUS FURNITURE AND FIXTURES

Item No.	Division/Unit /Fund/PR #	Item Description	Quantity	Unit	Unit Cost	Total Cost
LOT 2 - SUPPLY, FABRICATION, DELIVERY AND INSTALLATION OF VARIOUS FURNITURE AND FIXTURES						
1	PROPERTY MANAGEMENT UNIT-REG-2024-06-0921	Filing Cabinet Heavy Duty metal cabinet, all welded steel with rubber footing, Lateral type, 3 layer, with door lock mechanism (Stock Room) Gauge: 22" Dimension: at least D16.5" x 33"H x 35"W	5	units	15,000.00	75,000.00
2	PROPERTY MANAGEMENT UNIT-REG-2024-06-0921	Filing Cabinet -Heavy Duty metal cabinet, all welded steel with rubber footing, Lateral type, open shelves, 3 layer Gauge: 24" Dimension: at least D16.5" x 33"H x 35"W	3	units	25,000.00	75,000.00
3	PROPERTY MANAGEMENT UNIT-REG-2024-06-0921 (5) RECORDS UNIT-REG-2024-06-0921 (1)	Foldable Table Dimension:- approx. L72" x W18" x H29", black Hard Plastic Top, Metal Legs	6	pcs	5,000.00	30,000.00
5	PROPERTY MANAGEMENT UNIT-REG-2024-06-0921	Locker 15 Door, All metal, Key-Lock Mechanism Dimension: At least W90X40XH185 CM	2	pcs	20,000.00	40,000.00
6	PROPERTY MANAGEMENT UNIT-REG-2024-06-0921	Wall mounted cabinet with key holder with key lock mechanism Capacity: 30 keys Dimension: At least 8" x 15" Material: Solid/Heavy duty Steel Construction	1	pc	8,500.00	8,500.00
7	PROPERTY MANAGEMENT UNIT-REG-2024-06-0921	Wall mounted cabinet - Fabricated Heavy duty metal cabinet, all welded steel with perforated panel for hooks; with lock mechanism Wall Mount Storage Cabinet for tools with key mechanism Metal Cupboard Features: perforated panels for hooks capable for tools organization Compartments: 3 compartments with 3 adjustable layer Material: Metal steel Gauge: 24 Dimension: atleast L38"xH26"xW12"	1	pc	35,000.00	35,000.00



Item No.	Division/Unit /Fund/PR #	Item Description	Quantity	Unit	Unit Cost	Total Cost
8	CASHIER UNIT-REG-2024-06-0921	Storage Steel Cabinet Heavy Duty, Metal Locker Swing Door Metal Cabinet Size: At least 900w x 450d x 1802h 5 adjustable Shelves Color: Grey Lock type: Mastered plastic flush lock with 3 keys. Manufactured with at least 0.6 mm thick sheet steel. Epoxy powder coated for more durability. Each shelf can carry load of 30 Kgs uniformly distributed load.	2	unit	14,000.00	28,000.00
9	PROPERTY MANAGEMENT UNIT-REG-2024-06-0921 (12) RECORDS UNIT-REG-2024-06-0921 (2) LSD-NSHP-2024-06-0922 (12)	Visitors Chair Specification: Dimension: at least 440 mm L x 575 mm W x 828 mm H Mid Back Leather Finish Chair Sled Legs in high quality steel Chrome Finish	26	pcs	6,000.00	156,000.00
10	RECORDS UNIT-REG-2024-06-0921 (6) PERSONNEL SECTION-REG-2024-06-0921 (6)	Mobile Pedestal Drawer Color: metal gray, movable with wheels with 3 Drawers including 1 Central Lock, 1 Pen Tray and 1 File Divider Dimensions: atleast 40(W) x 56.5(D) x 65.5(H) cm Weight: At least 14kgs 5 Swivel Castors built for ease on mobility	12	pcs	5,000.00	60,000.00
11	CASHIER UNIT-REG-2024-06-0921 (6) PERSONNEL SECTION-REG-2024-06-0921 (3)	Office chair , with armrest, swivel chair Color: Black Product Dimensions at least: 26"D x 21.5"W x 43"H Special Feature: Adjustable Height, Ergonomic, Swivel, Rolling, Seat Lock Arm Style: Flip-up Arm. All specs at least: Seat Back Interior Height: 22.5 Inches Seat Height: 21.5 Inches Seat Depth: 21.5 Inches Arm Height: 28.5 Inches Item Weight: 12.6 pounds Weight Capacity: 100kgs	9	pcs.	6,000.00	54,000.00

Item No.	Division/Unit /Fund/PR #	Item Description	Quantity	Unit	Unit Cost	Total Cost
16	PROPERTY MANAGEMENT UNIT-REG-2024-06-0921	Roller Blinds Color Light Grey, Blackout Built-in spring system. Including installation 2.03H x 1.44W (in meters) - 4 pcs. 1.90H x .96W (in meters) - 1 pc. 2.03H x 2.79 (in meters) - 1 pc	1	lot	70,000.00	70,000.00
17	PERSONNEL SECTION-REG-2024-06-0921	Roller blinds Color: Light Grey, Blackout, Combi Shade blinds can block sunlight and harmful UV. Size: W-1.40 meter X H-2.0 meter (8 pcs) Size: W-1.13 meter X H-1.15meter (1pc) Built-in spring system. The rate of raising can be adjustable. Including material (e.g. brackets and screws) Including installation	1	lot	80,000.00	80,000.00
18	PROCUREMENT MANAGEMENT SECTION-REG-2024-06-0921	Roller Blinds Color: Light Grey, Blackout Shade blinds can block sunlight and harmful UV. Built-in spring system. The rate of raising can be adjustable. Including material (e.g. brackets and screws) Including installation	1	lot	96,000.00	96,000.00
		1.47m x 2.08m	1	pc		
		2.29m x 2.08m	1	pc		
		2.12m x 2.08m	1	pc		
		1.49m x 2.08m	1	pc		
		1.47m x 2.08m	1	pc		
		1.50m x 2.08m	1	pc		
		1.50m x 2.08m	1	pc		
		1.41m x 2.08m	1	pc		
		1.38m x 2.08m	1	pc		
		1.01m x 2.08m	2	pc		
		0.036m x 2.08m	2	pc		
19	RECORDS UNIT-REG-2024-06-092	Roller Blinds Color: Light Grey, Blackout Shade blinds can block sunlight and harmful UV. Built-in spring system. The rate of raising can be adjustable. Including material (e.g. brackets and screws) Including installation	1	lot	45,402.00	45,402.00
		Size: 1.47955 m X 2.032 m (AREA: 32.36)	1	pc		
		Size: 1.4859 m X 2.032 m (AREA: 32.50)	1	pc		
		Size: 1.49225 m X 2.032 m (AREA: 32.64)	1	pc		
		Size: 1.4732 m X 2.032 m (AREA: 32.22)	1	pc		
		TOTAL AREA: 129.72				

Item No.	Division/Unit /Fund/PR #	Item Description	Quantity	Unit	Unit Cost	Total Cost
		Combination Black Out Mirage				
20	LSD-NSHP-2024-06-0922	Roller Blinds (Directors Office Receiving Area) Color Light Grey, Blackout "30% Polyester+70% PVC,high quality plastic chain, All Dimensions Are The Required Length Of Fabric -Right Mechanism All Dimensions Are The Required Length Of Fabric -Left Mechanism"	1	lot	34,800.00	34,800.00
		1.820 x 3.0m	1	pc		
		1.340 x 3.0m	1	pc		
		1.330 x 3.0m	1	pc		
		1.380 x 3.0m	1	pc		
21	LSD-NSHP-2024-06-0922	Roller Blinds (Directors Office Conference Area) Color Light Grey, Blackout "30% Polyester+70% PVC, high quality plastic chain, All Dimensions Are The Required Length Of Fabric -Right Mechanism All Dimensions Are The Required Length Of Fabric -Left Mechanism"	1	lot	34,300.00	34,300.00
		1.430 x 2.150m	1	pc		
		1.480 x 2.150m	1	pc		
		1.460 x 2.150m	1	pc		
		1.450 x 2.150m	1	pc		
		1.380 x 2.20m	1	pc		
		1.350 x 2.20m	1	pc		
22	PROCUREMENT MANAGEMENT SECTION-REG-2024-06-0921	6 Shelves Slotted Angle Metal Rack Size: 72 x 42 x 15 Inch Storage Rack unit (22 Gauge shelf 16 gauge angle) (Ivory) Luggage Rack	7	pcs.	7,128.00	49,896.00
23	LSD-NSHP-2024-06-0922 (Director's Office)	Display Rack 25mm thk laminated finish mfc cabinet with adjustable shelves. Swing door with clear glass Size: 700mm (L) x 470mm(D) x 2200mm (H)	2	unit	25,000.00	50,000.00
24	LSD-NSHP-2024-06-0922 (Director's Office)	L-Shape Table with Mobile Pedestal and Drawer 25mm thk laminated table mfc with drawer with lock and mobile cabinet with centralized lock, Standard laminated mobile pedestal exclusive pen tray and file drawer MAIN TABLE at least 1500mm (L) x 600mm D x 750mm (H) SIDE RETURN 1100mm (L) x 450(D) x 750 (h)	2	unit	20,000.00	40,000.00

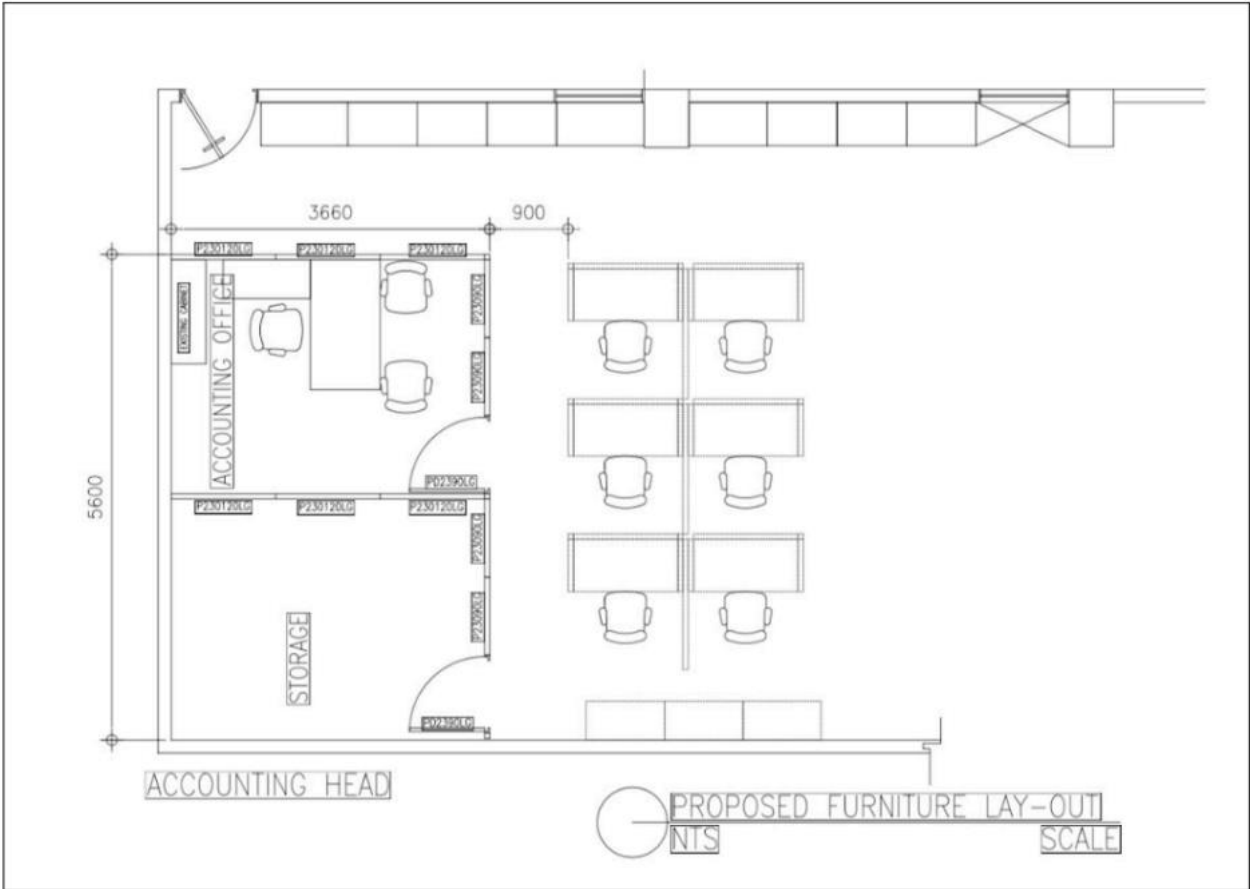
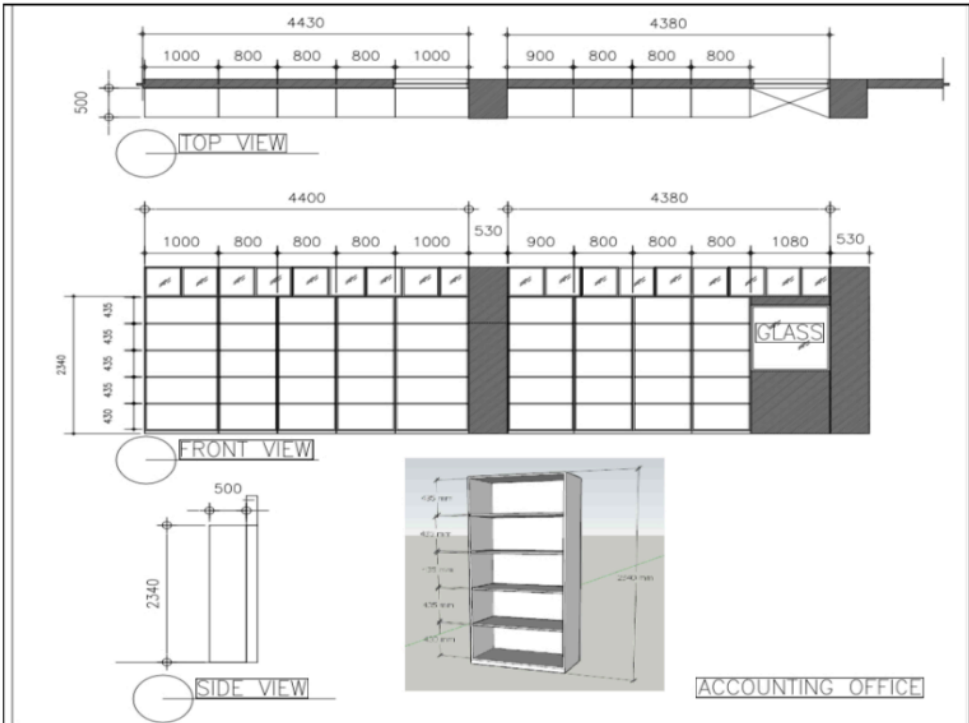
Item No.	Division/Unit /Fund/PR #	Item Description	Quantity	Unit	Unit Cost	Total Cost
25	LSD-NSHP-2024-06-0922 (Director's Office)	Modular Conference Table Modular conference table. 25mm thk table top and legs, with wire management cable cover and tray,snake tube for wiring entrance,1400W free standing desks. 1400 x 700mm x 750h - 4pcs 2200 x 700 x 750h - 1 pc 700 x 700 quarter corner table -2 pcs	1	unit	73,300.00	73,300.00
26	LSD-NSHP-2024-06-0922	Laboratory Chairs Chair Type: Lab Chair Wheeled, Stainless Steel Base or chrome plated Height Adjustable Back Adjustable: Yes Arms Adjustable: No Colour: Black Seat Material: Polyurethane with foam Weight Capacity: up to 100 kg	70	units	7,000.00	490,000.00
27	LSD-NSHP-2024-06-0922	Laboratory Glasswares Mobile Drying Cart Material: SUS316 stainless steel with caster wheel	1	lot	450,000.00	450,000.00
		Size: 1000mm (L) x 400mm D x 1000mm (H)	10	units		
		Size: 1000mm (L) x 400mm D x 1500mm (H)	5	units		
		Size: 1300mm (L) x 400mm D x 1000mm (H)	4	units		
28	LSD-NSHP-2024-06-0922	Sterilizer Canister for Petri Dishes Polished stainless-steel or any material that can withstand 121C temperature and 15psi pressure can hold 10 to 18 glass Petri dishes size (diameter: 100mm; height: 10 to 15mm)	15	units	2,000.00	30,000.00
29	LSD-NSHP-2024-06-0922	Pegged Drying Rack for Laboratory Glasswares minimum of 52 Pegs PP Material Glassware Drying Rack Free-Standing Detachable Pegs Lab Glass Drying Rack for Laboratory Utensil"	3	units	7,500.00	22,500.00
30	LSD-NSHP-2024-06-0922	Laboratory Shoe Rack stainless steel material 4 layers	4	units	5,000.00	20,000.00
31	LSD-NSHP-2024-06-0922	Accessory hook for laboratory gown stainless steel material 6 or more hooks	4	units	1,500.00	6,000.00

Item No.	Division/Unit /Fund/PR #	Item Description	Quantity	Unit	Unit Cost	Total Cost
32	LSD-NSHP-2024-06-0922	Automatic Hand Sterilizer/Alcohol Dispenser Capacity: 1600 ML Installation: Wall Mounted Induction: Infrared Dosage: 0.8 - 1.2 ML per spray Battery Operated: 4x AA Battery Power Output: Supports AC/DC Input: 5V DC	5	pcs	2,500.00	12,500.00
	*note: all measurements mentioned are minimum, with ±10% tolerance					
					Total	2,673,498.00

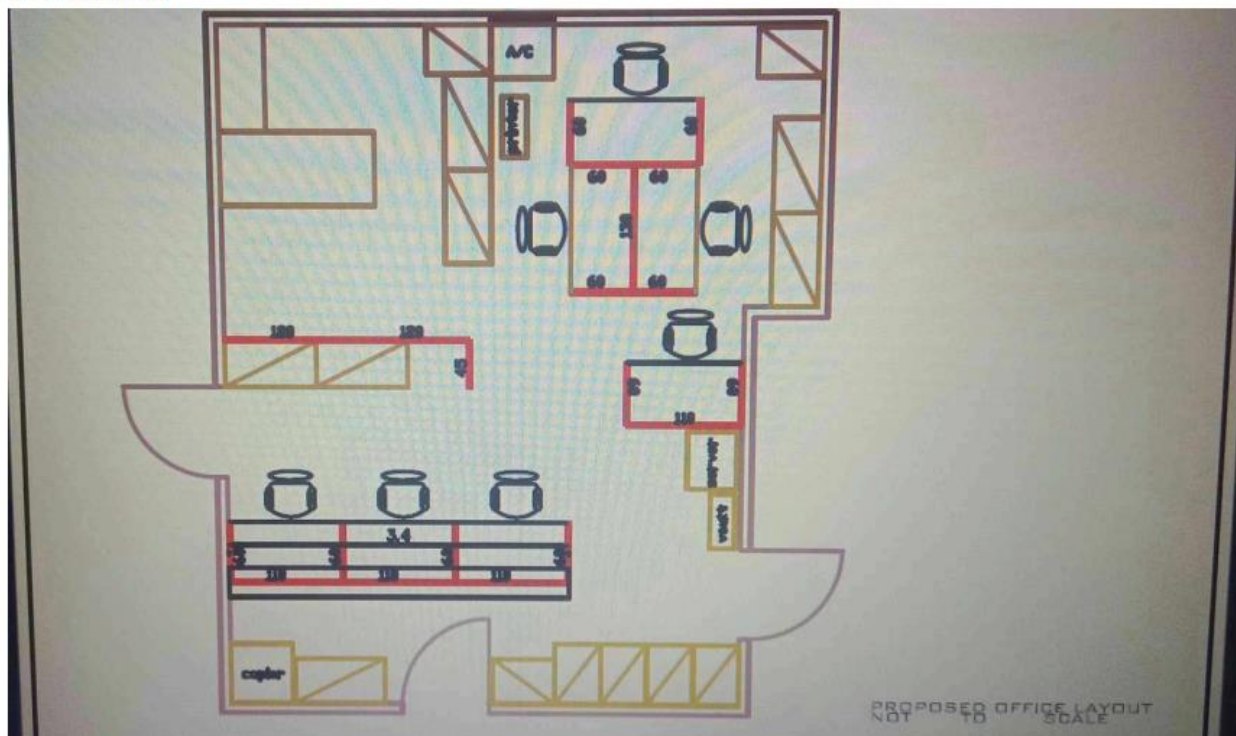
ANNEX D

MODULAR PARTITION

1. ACCOUNTING SECTION

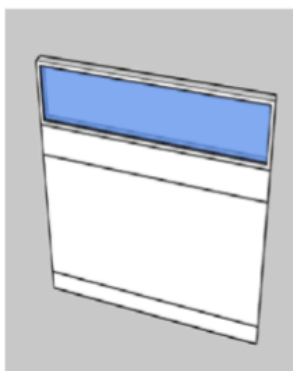


2. RECORDS UNIT

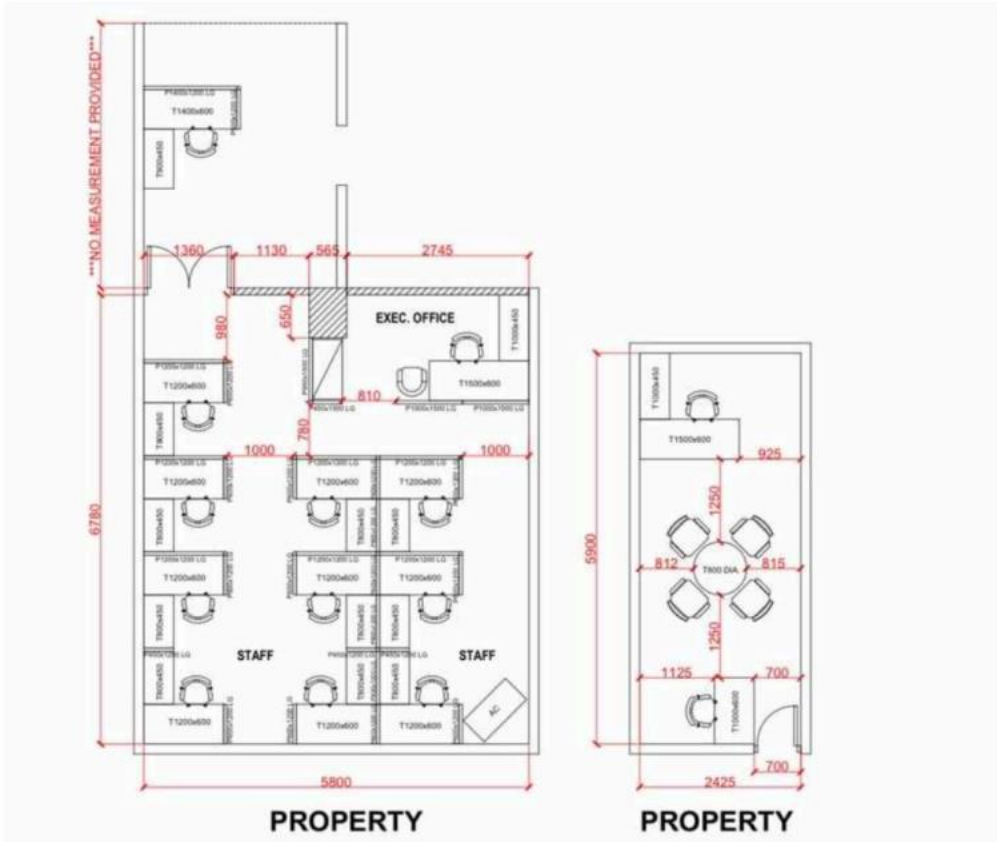


3. LABORATORY SERVICES DIVISION

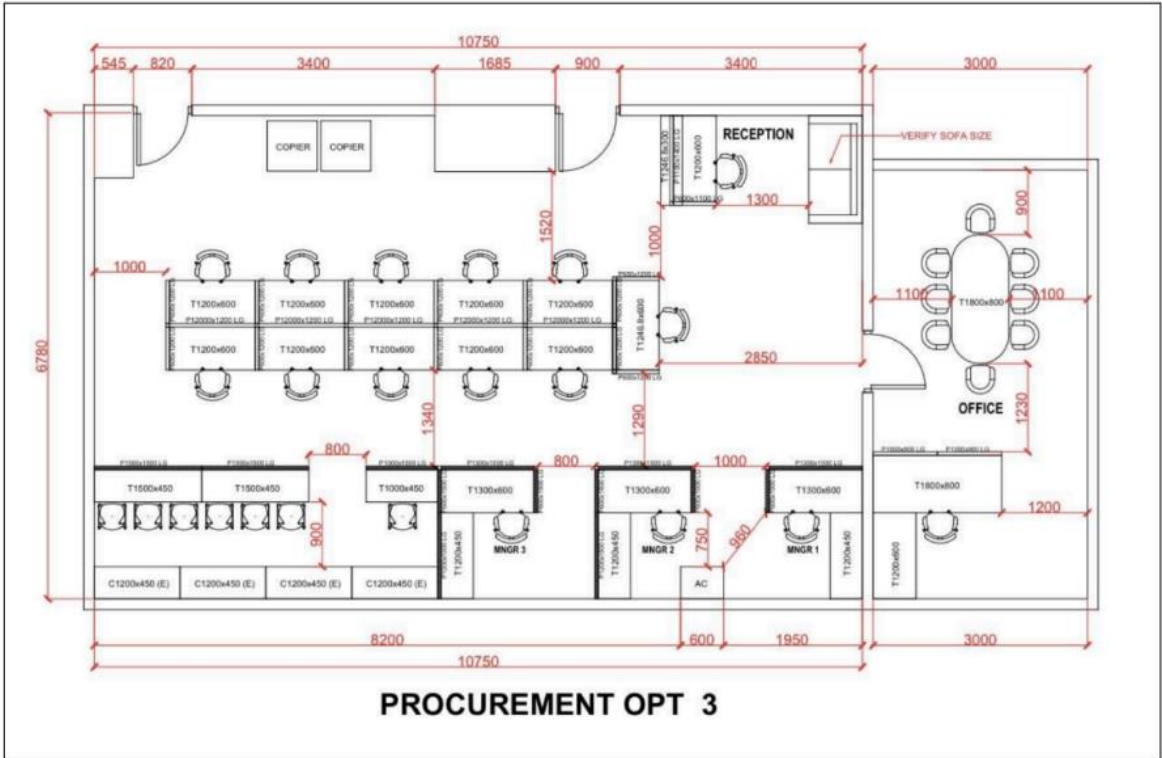
Clear glass partition



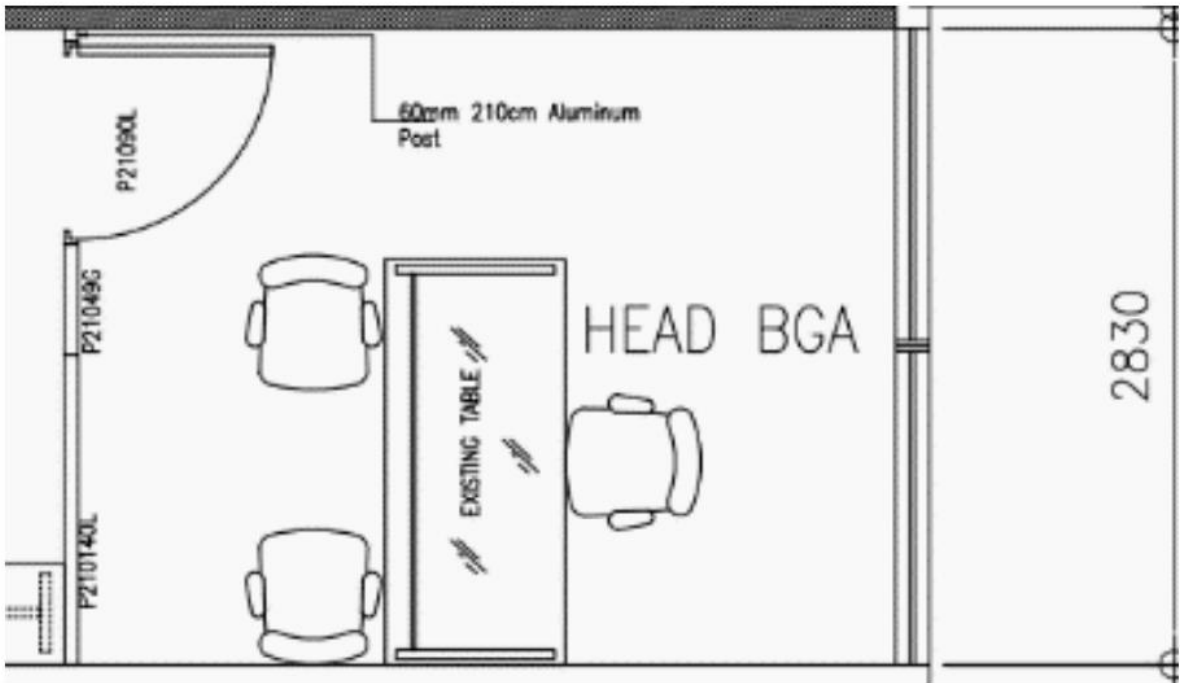
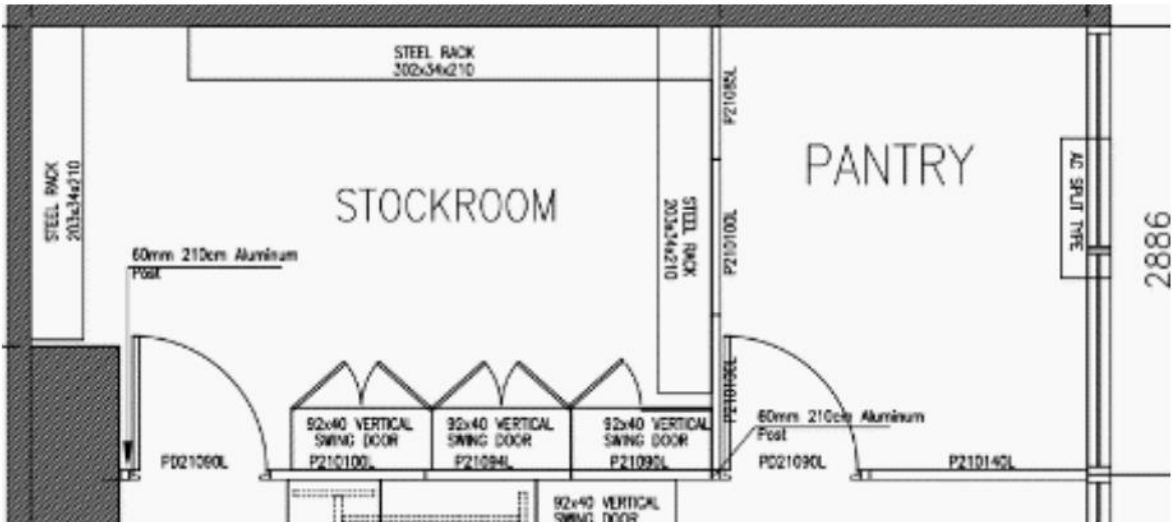
4. PROPERTY MANAGEMENT UNIT



5. PROCUREMENT MANAGEMENT SECTION



6. BUILDING AND GROUNDS ADMINISTRATION



7. CASHIER UNIT

The floor plan for the Cashier Unit is L-shaped. The left vertical section is 5800 units high and 2800 units wide. The right horizontal section is 3800 units wide. The plan includes a 'STORAGE' area on the left, a 'CASHIER' area on the right, and an 'AC' unit at the top. Various equipment is labeled with codes and dimensions, including P1200x1400 FG, T1200x600, P1000x600, T1300x600, P1300x1200 FG, and P1300x1200 FG. Dimensions for the equipment are also provided, such as 1050, 1000, 1200, 1750, 3000, 1900, 2800, and 3800.

CASHIER

NOTE: BIDDERS ARE REQUIRED TO CONDUCT SITE INSPECTION.