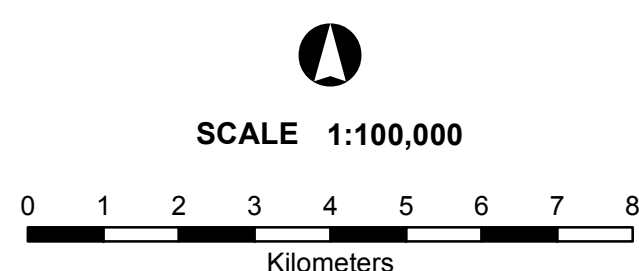
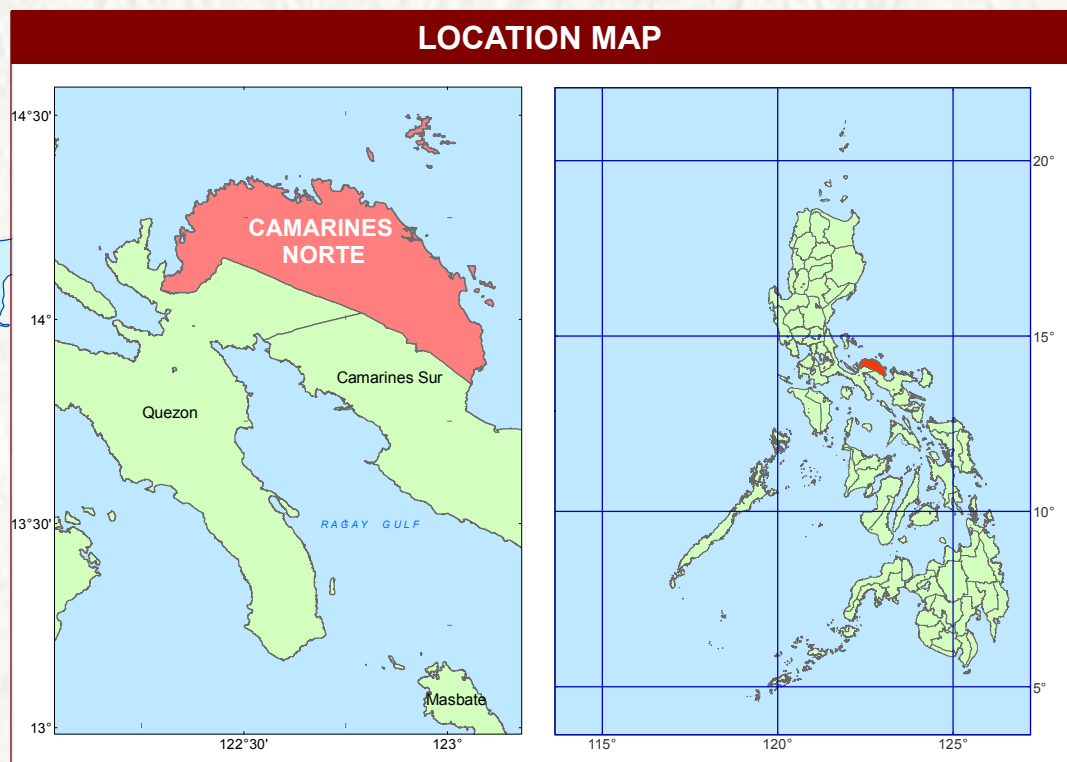
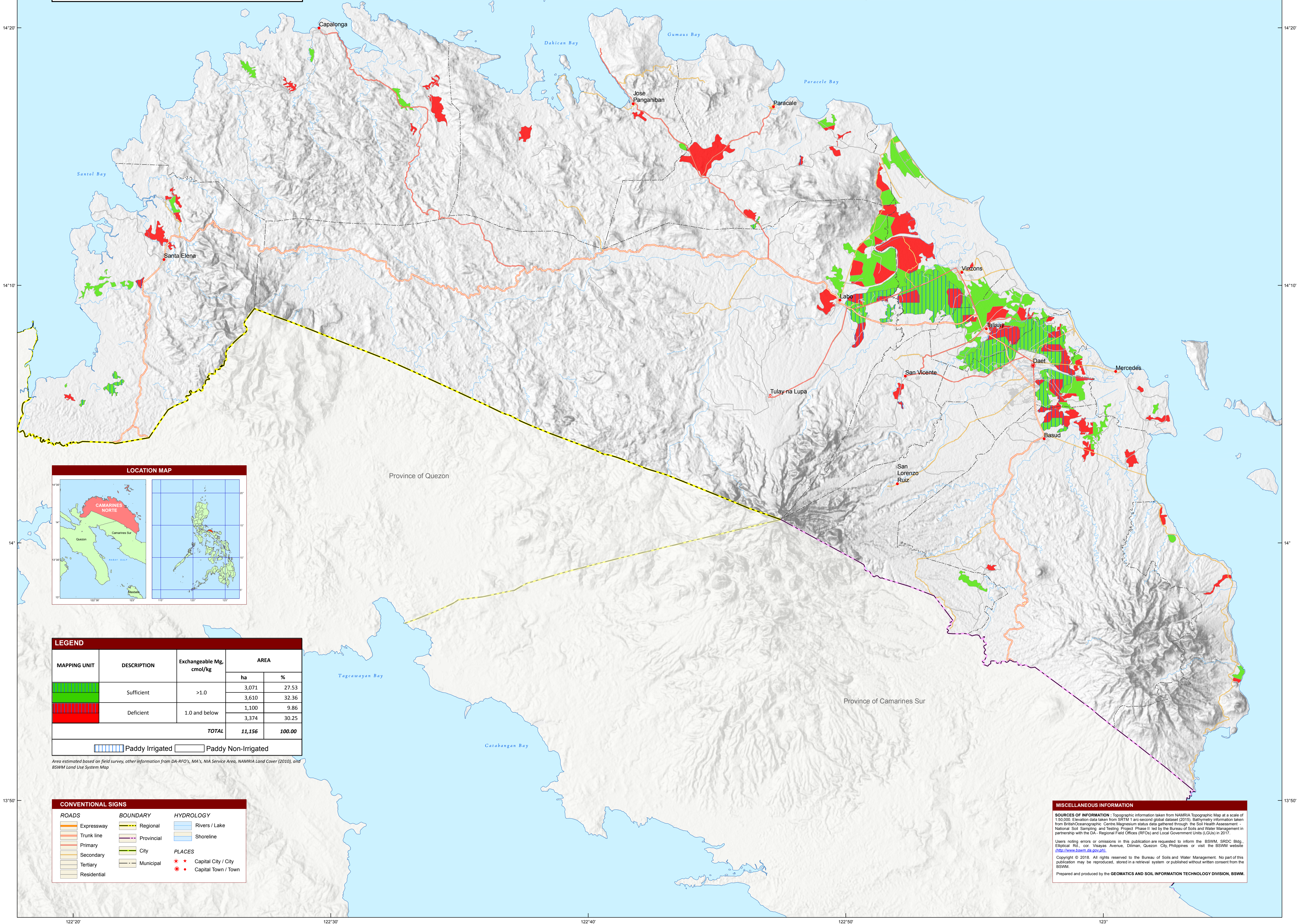


## NUTRIENT STATUS MAP : MAGNESIUM ( Key Rice Areas )

### PROVINCE OF CAMARINES NORTE



Projection : Transverse Mercator  
Datum : Luzon 1911  
DISCLAIMER : All political boundaries are not authoritative



LEGEND				
MAPPING UNIT	DESCRIPTION	Exchangeable Mg, cmol/kg	AREA	
			ha	%
	Sufficient	>1.0	3,071	27.53
	Deficient	1.0 and below	3,610	32.36
			1,100	9.86
			3,374	30.25
TOTAL			11,156	100.00
	Paddy Irrigated			
	Paddy Non-Irrigated			

CONVENTIONAL SIGNS		
<b>ROADS</b>	<b>BOUNDARY</b>	<b>HYDROLOGY</b>
Expressway	Regional	Rivers / Lake
Trunk line	Provincial	Shoreline
Primary	City	<b>PLACES</b>
Secondary	Municipal	Capital City / City
Tertiary		Capital Town / Town
Residential		

**MISCELLANEOUS INFORMATION**

**SOURCES OF INFORMATION :** Topographic information taken from NAMRIA Topographic Map at a scale of 1:50,000. Elevation data taken from SRTM 1 arc-second global dataset (2015). Bathymetry information taken from British Oceanographic Centre Magnesium status data gathered through the Soil Health Assessment - National Soil Sampling and Testing Project Phase II led by the Bureau of Soils and Water Management in partnership with the DA - Regional Field Office (RFO) and Local Government Units (LGU) in 2017.

Users noting errors or omissions in this publication are requested to inform the BSWM, SRDC Bldg., Elliptical Rd., cor. Visayas Avenue, Diliman, Quezon City, Philippines or visit the BSWM website (<http://www.bswm.diliman.gov.ph>).

Copyright © 2018. All rights reserved to the Bureau of Soils and Water Management. No part of this publication may be reproduced, stored in a retrieval system or published without written consent from the BSWM.

Prepared and produced by the GEOMATICS AND SOIL INFORMATION TECHNOLOGY DIVISION, BSWM.