



LEGEND						
SUITABILITY RATING	DESCRIPTION	LIMITING FACTORS			AREA	
		Moderate	Marginal	Severe	ha	%
S1	Highly Suitable	-	-	-	36	14.81
S2f	Moderately Suitable	f	-	-	157	64.61
S2i		i	-	-	28	11.52
S2if		i, f	-	-	13	5.35
S3x	Marginally Suitable	i, d, f	x	-	9	3.70
TOTAL					243	100.00



REPUBLIC OF THE PHILIPPINES
DEPARTMENT OF AGRICULTURE
BUREAU OF SOILS AND WATER MANAGEMENT
Elliptical Road Cor. Visayas Ave., Diliman, Quezon City

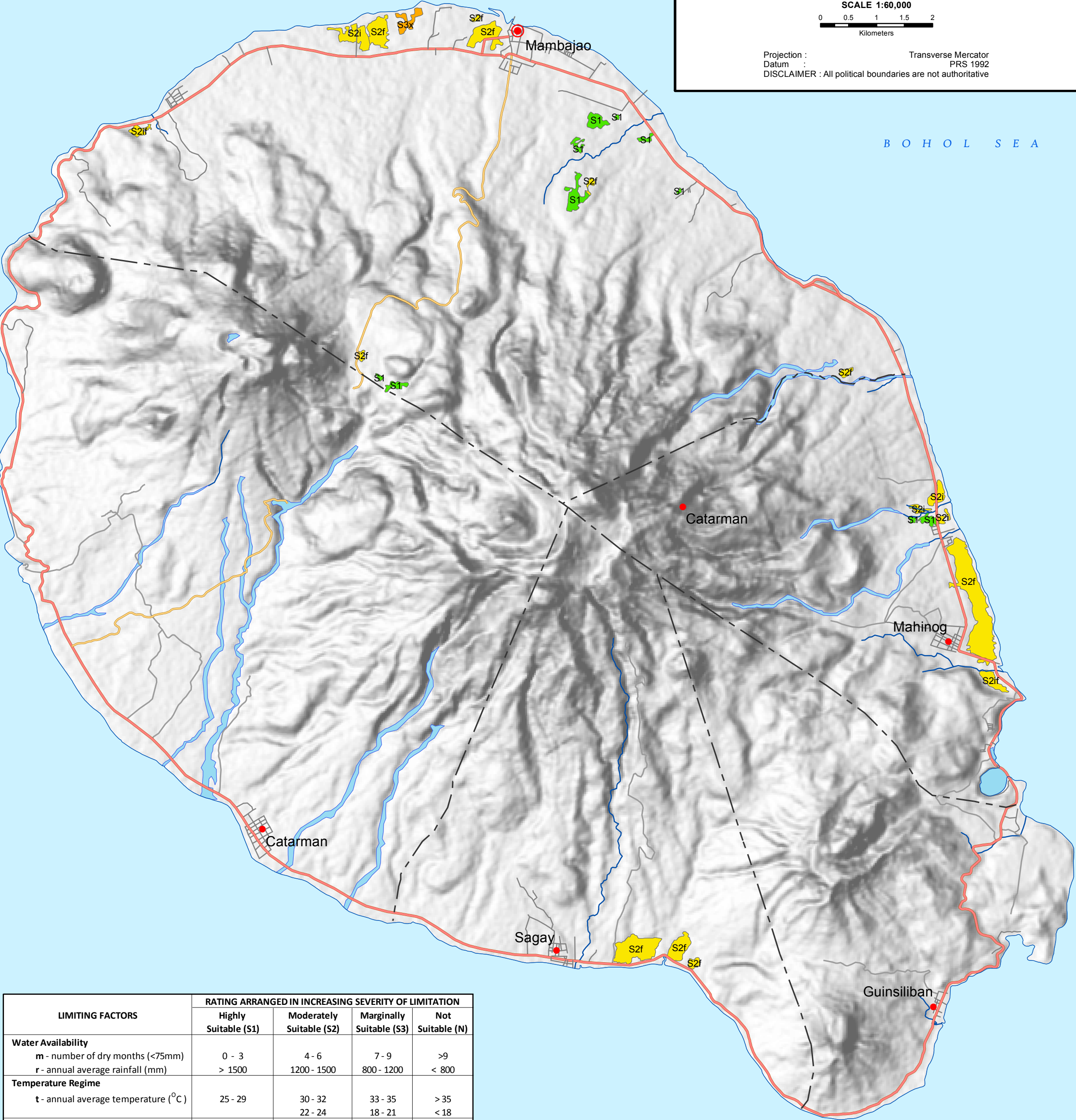
RICE SUITABILITY MAP

(Key Rice Areas)
PROVINCE OF CAMIGUIN



SCALE 1:60,000
0 0.5 1 1.5 2
Kilometers

Projection : Transverse Mercator
Datum : PRS 1992
DISCLAIMER : All political boundaries are not authoritative



LIMITING FACTORS	RATING ARRANGED IN INCREASING SEVERITY OF LIMITATION			
	Highly Suitable (S1)	Moderately Suitable (S2)	Marginally Suitable (S3)	Not Suitable (N)
Water Availability m - number of dry months (<75mm) r - annual average rainfall (mm)	0 - 3 > 1500	4 - 6 1200 - 1500	7 - 9 800 - 1200	>9 < 800
Temperature Regime t - annual average temperature (°C)	25 - 29	30 - 32 22 - 24	33 - 35 18 - 21	> 35 < 18
Terrain s - slope (%) o - stoniness e - erosion i - flooding	0 - 3 none none - slight none - slight	3 - 8 slight slight - moderate slight - moderate	8 - 18 moderate moderate severe	>18 severe severe -
Rooting Conditions d - soil drainage class	VPD - SPD	SPD - MWD	WD	SED - ED
x - soil texture	C, SC, SIC; CL, SCL SiCL	L, SiL, Si	SL, LS	S
h - soil depth (cm)	> 50	41 - 50	20 - 40	< 20
Nutrient Availability f - soil fertility	Moderately High to High (MH-H)	Moderately Low (ML)	Low (L)	-

Note:
Highly Suitable (S1) - with none to slight limitations for a given use. Slight limitations will not significantly reduce productivity or benefit nor raise inputs above an acceptable level.
Moderately Suitable (S2) - with limitations which are moderately severe for sustained application for a given use. Limitations will moderately reduce productivity or benefits. Requires increased input to the extent that the overall advantage to be gained will be inferior to that expected on S1 land.
Marginally suitable (S3) - with limitations which in aggregate are severe for sustained application of a given use and will significantly reduce productivity or benefits. Limitations will significantly increase required inputs, that this expenditure will only be marginally satisfied.
Not Suitable (N) - with severe limitations which are difficult to overcome in time or cannot be corrected at currently acceptable cost. Limitations are so severe that prevent successful sustained use of the land in the given manner.

MISCELLANEOUS INFORMATION
SOURCES OF INFORMATION: Topographic information taken from NAMRIA Topographic Map at a scale of 1:50,000. Elevation data taken from SRTM 1 arc-second global dataset (2015). Bathymetry information taken from British Oceanographic Centre Fertility data gathered through the Soil Health Assessment-National Soil Sampling and Testing Project Phase II led by the Bureau of Soils and Water Management in partnership with the DA-Regional Field Offices (RFOs) and Local Government Units (LGUs).
Users noting errors or omissions in this publication are requested to inform the BSWM, SRDC Bldg., Elliptical Rd., cor. Visayas Avenue, Diliman, Quezon City, Philippines or visit the BSWM website (<http://www.bswm.da.gov.ph>).
Copyright © 2017. All rights reserved to the Bureau of Soils and Water Management. No part of this publication may be reproduced, stored in a retrieval system or published without written consent from the BSWM.
Prepared and produced by the GEOMATICS AND SOIL INFORMATION TECHNOLOGY DIVISION, BSWM.



CONVENTIONAL SIGNS		
ROADS	BOUNDARY	HYDROLOGY
Expressway	Regional	Rivers / Lake
Trunk line	Provincial	Shoreline
Primary	Municipal	PLACES
Secondary		Capital City / City
Tertiary		Capital Town / Town