

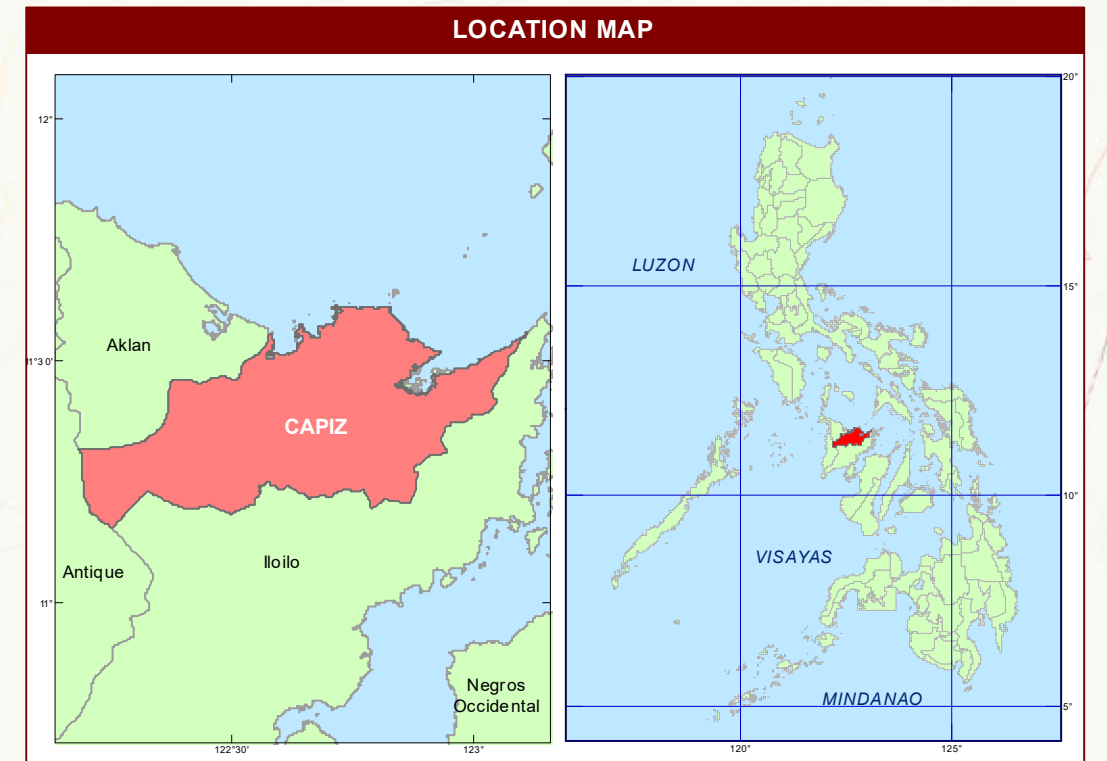
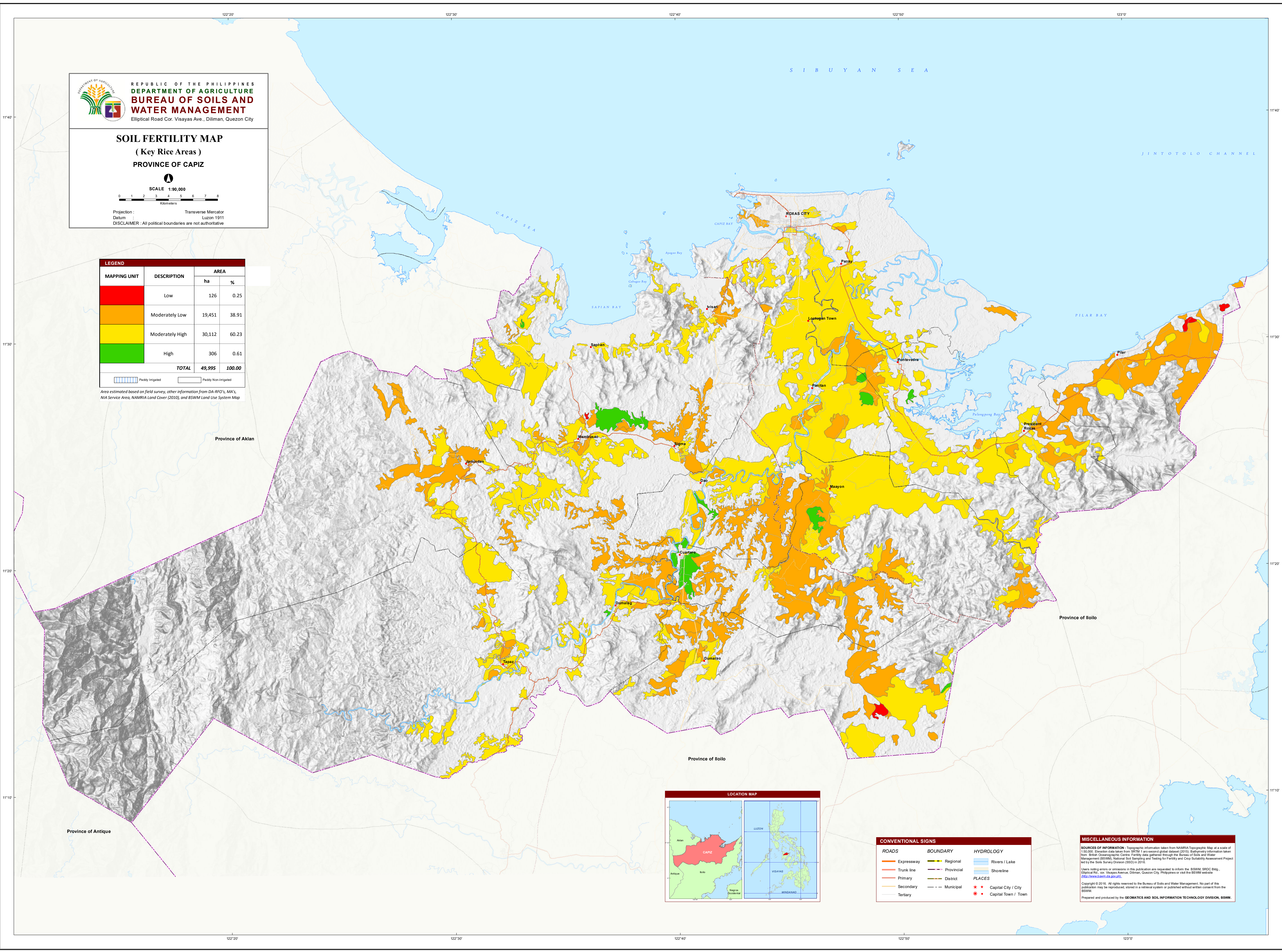
REPUBLIC OF THE PHILIPPINES
DEPARTMENT OF AGRICULTURE
**BUREAU OF SOILS AND
WATER MANAGEMENT**
Elliptical Road Cor. Visayas Ave., Diliman, Quezon City

SOIL FERTILITY MAP
(Key Rice Areas)
PROVINCE OF CAPIZ

SCALE 1:90,000

Projection : Transverse Mercator
Datum : Luzon 1911
DISCLAIMER : All political boundaries are not authoritative

LEGEND			
MAPPING UNIT	DESCRIPTION	AREA	
		ha	%
	Low	126	0.25
	Moderately Low	19,451	38.91
	Moderately High	30,112	60.23
	High	306	0.61
TOTAL		49,995	100.00
Area estimated based on field survey, other information from DA-RFO's, MA's, NIA Service Area, NAMRIA Land Cover (2010), and BSWM Land Use System Map			



CONVENTIONAL SIGNS		
ROADS	BOUNDARY	HYDROLOGY
Expressway	Regional	Rivers / Lake
Trunk line	Provincial	Shoreline
Primary	District	
Secondary	Municipal	PLACES
Tertiary		Capital City / City
		Capital Town / Town

MISCELLANEOUS INFORMATION

SOURCES OF INFORMATION : Topographic information taken from NAMRIA Topographic Map at a scale of 1:50,000. Elevation data taken from SRTM 1 arc-second global dataset (2010). Bathymetry information taken from British Oceanographic Centre. Fertility data gathered through the Bureau of Soils and Water Management (BSWM) National Soil Sampling and Testing for Fertility and Crop Suitability Assessment Project led by the Soil Survey Division (SSD) in 2016.

Users refer errors or omissions in this publication are requested to inform the BSWM SRDC Bldg., Elliptical Rd. cor. Visayas Avenue, Diliman, Quezon City, Philippines or visit the BSWM website (<http://www.bswm.da.gov.ph>)

Copyright © 2016. All rights reserved to the Bureau of Soils and Water Management. No part of this publication may be reproduced, stored in a retrieval system or published without written consent from the BSWM.

Prepared and produced by the **GEOMATICS AND SOIL INFORMATION TECHNOLOGY DIVISION, BSWM.**