

LAND SUITABILITY MAP

NATURAL RUBBER

LAND RESOURCES EVALUATION AND SUITABILITY ASSESSMENT OF STRATEGIC PRODUCTION AREAS

DAVAO CITY



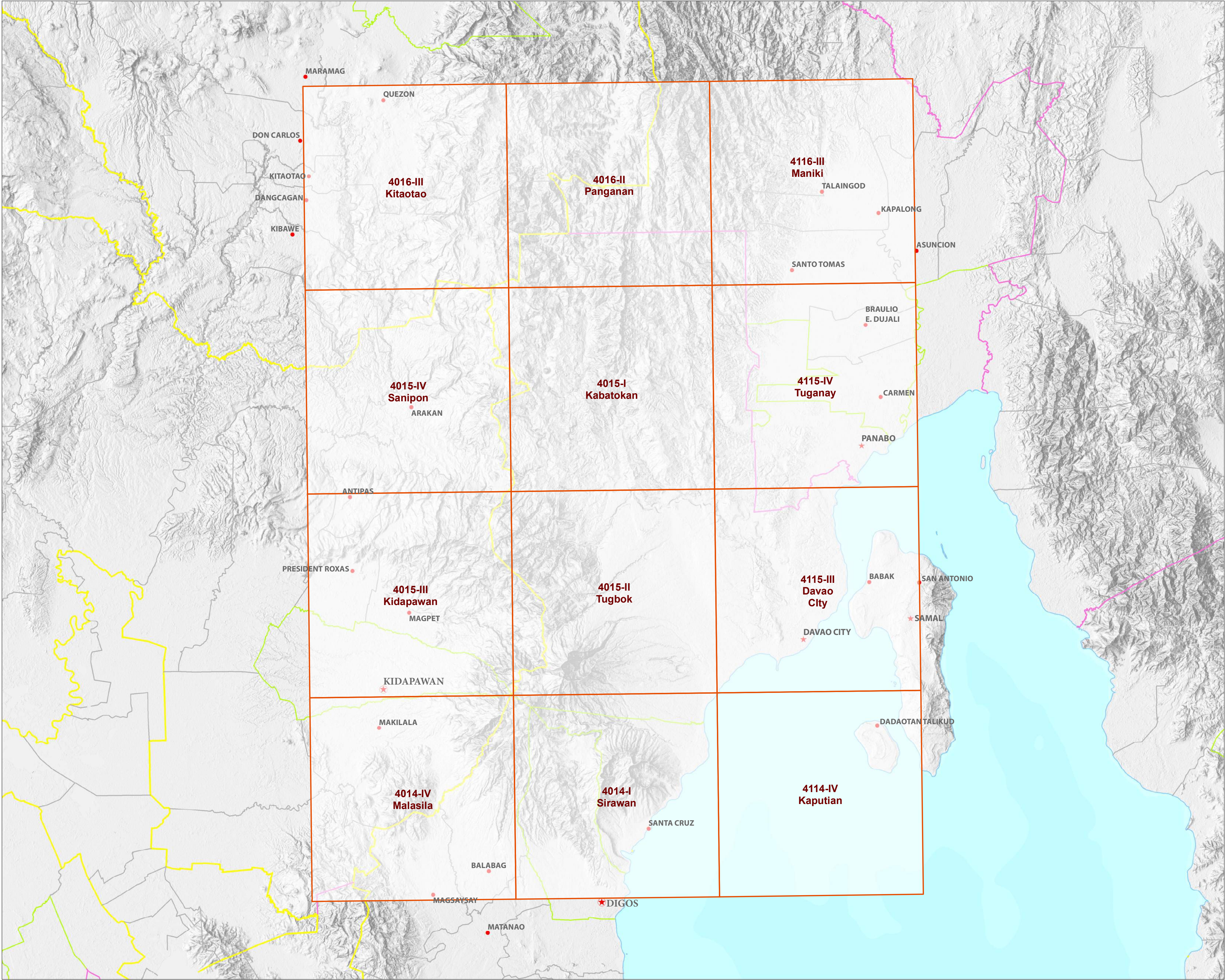
REPUBLIC OF THE PHILIPPINES
DEPARTMENT OF AGRICULTURE
BUREAU OF SOILS AND WATER MANAGEMENT

SRDC Bldg., Elliptical Road Cor. Visayas Avenue, Diliman, Quezon City 1101
Tel/Fax No.: (+632) 332-9534 E-mail: bswmclientcenter@yahoo.com

MAP INDEX

LAND RESOURCES EVALUATION AND SUITABILITY ASSESSMENT OF STRATEGIC PRODUCTION AREAS

DAVAO CITY



LEGEND

Places

- ★ Capital City
- ★ City
- Capital Town
- Town

Administrative Boundary

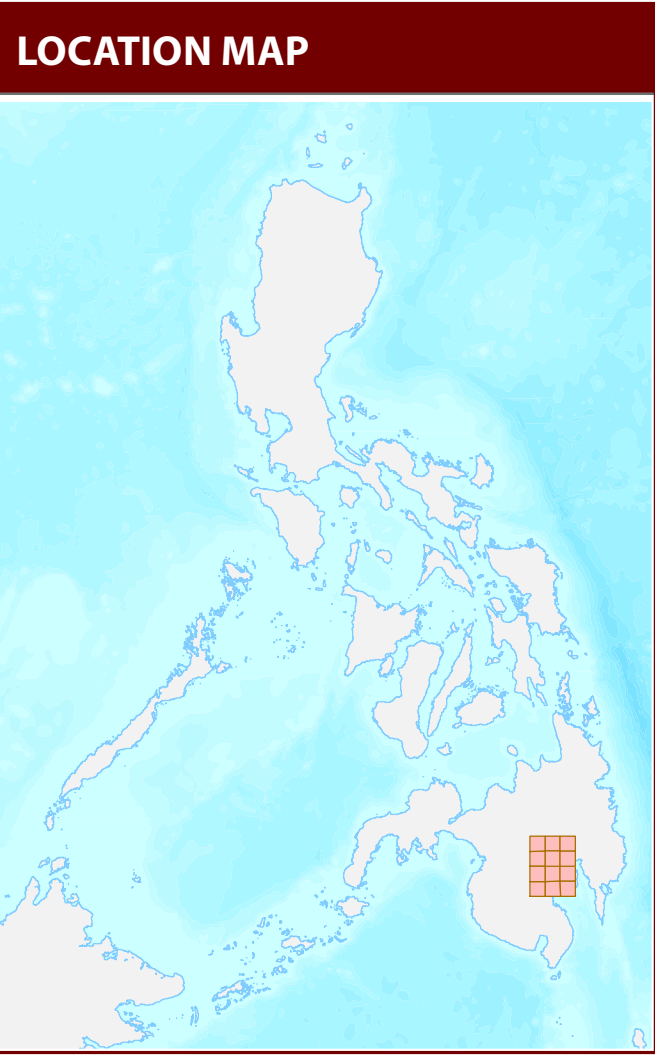
- Regional
- Provincial
- City
- Municipal

Map Index

- Index grid

Topographic Relief

Bathymetry



MISCELLANEOUS INFORMATION

Land suitability information produced by the Bureau of Soils and Water Management (BSWM) through the **Land Resources Evaluation and Suitability Assessment of Strategic Production Areas for Major Commodities Project** duly supported by the Philippine Council on Agriculture and Fisheries (PCAF) and funded by the Bureau of Agricultural Research (BAR).

Map produced by the Geomatics and Soil Information Technology Division, Bureau of Soils and Water Management (BSWM).

Users noting errors or omissions in this publication are requested to inform the Bureau of Soils and Water Management.

Unless otherwise noted, copyright and any other intellectual property rights is owned by the Philippine Government.

REPUBLIC OF THE PHILIPPINES
DEPARTMENT OF AGRICULTURE
BUREAU OF SOILS AND WATER MANAGEMENT
SRDC Bldg., Elliptical Road Cor. Visayas Avenue,
Diliman, Quezon City 1101 Philippines
Tel/Fax No.: (+632) 332-9534 E-mail: bsww.clientcenter@yahoo.com

LAND SUITABILITY MAP FOR RUBBER

LAND RESOURCES EVALUATION AND SUITABILITY ASSESSMENT OF STRATEGIC PRODUCTION AREAS DAVAO CITY, REGION XI

EXTENT OF SUITABILITY FOR RUBBER PRODUCTION BY MUNICIPALITY

MUNICIPALITY	EXISTING RUBBER (Ha)			TOTAL EXISTING AREA (Ha)	EXPANSION AREA (Ha)						CONFLICT RESOLUTION AREA (Ha)										TOTAL POTENTIAL EXPANSION AREA (Ha)
					Coconut		Shrubland, unmanaged*		Grassland, unmanaged*		Banana		Mango		Pineapple		Sugarcane		Other crops		
	S1	S2	S3		S1	S2	S1	S2	S1	S2	S1	S2	S1	S2	S1	S2	S1	S2			
DAVAO CITY	-	-	-	-	25,504	27,965	348	3,018	1,018	9,901	1,436	3,688	677	521	653	666	3	113	273	280	76,063
TOTAL	-	-	-	-	25,504	27,965	348	3,018	1,018	9,901	1,436	3,688	677	521	653	666	3	113	273	280	76,063

Note: Delivery of rubber planting materials must be started on the onset of rainy season.
*establishment of shade trees prior to planting of rubber.

SUITABILITY CLASSES:



Highly Suitable (S1)
Land having no significant limitation to sustained application of a given use, or only minor limitations that will not significantly reduce productivity or benefits and will not raise inputs above an acceptable level.



Marginally Suitable (S3)
Land having limitations which in aggregate are severe for sustained application of a given use and will so reduce productivity or benefits, or increase required inputs, that this expenditure will be only marginally justified.



Moderately Suitable (S2)
Land having limitation which in aggregate are moderately severe for sustained application of a given use; the limitation will reduce productivity or benefits and increase required inputs to the extent that the overall advantage to be gained from the use, although still attractive, will be appreciably inferior to that expected on class S1 land.



Not Suitable / Not Relevant
Land having limitations which may be surmountable in time but which cannot be corrected with existing knowledge at currently acceptable cost; the limitations are so severe as to preclude successful sustained use of the land in the given manner. Existing forest, shrubland greater than 18% slope, irrigated paddy rice and miscellaneous land types such as built up areas, roads, etc are considered as not relevant.

CLIMATE TYPE

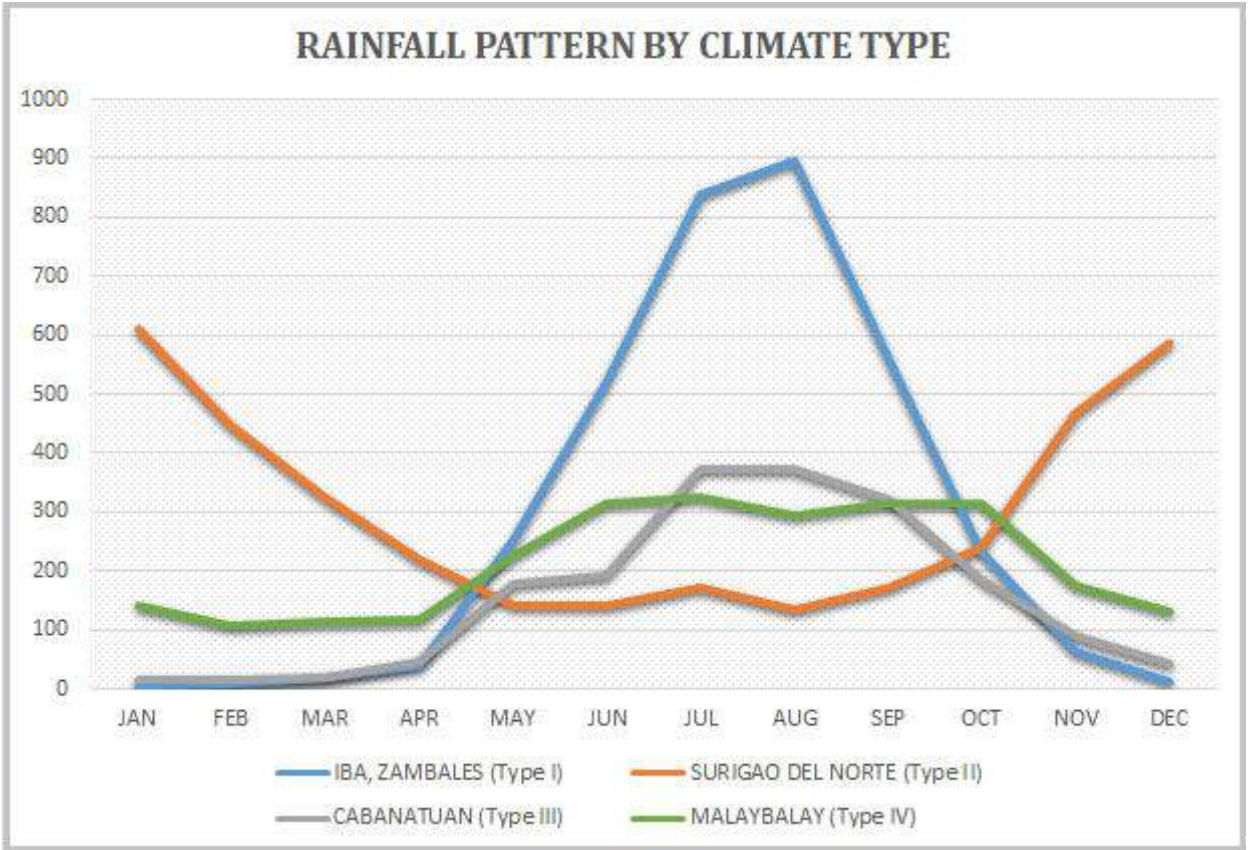
TYPE I : Two pronounced season, dry from November to April and wet during the rest of the year. Maximum rain period is from June to September

TYPE II : No dry season with a very pronounced maximum rain period from December to February. There is not a single dry month. Maximum monthly rainfall occurs during the period from March to May.

TYPE III : No very pronounced maximum rain period, with a dry season lasting only from one to three months, either during the period from December to February or from March to May. This type resembles Type I since it has a short dry season.

TYPE IV : Rainfall is more or less evenly distributed throughout the year. This type resembles Type II since it has no dry season.

Davao City is classified as climatic Type IV.



Source: PAGASA 2018, *Climatological Normals (Rainfall)*, Philippine Atmospheric, Geophysical and Astronomical Services Administration (PAGASA), accessed 27 July 2018, <<https://www1.pagasa.dost.gov.ph/index.php/climate/climatological-normals>>.

AGRONOMIC REQUIREMENT OF RUBBER PRODUCTION

LAND UTILIZATION TYPE	SUITABILITY RATING	SLOPE (%)	SOIL DEPTH (cm)	SOIL TEXTURE	SOIL DRAINAGE	SOIL REACTION (pH)	INHERENT FERTILITY	FLOODING CLASS	EROSION CLASS	ROCK OUTCROPS	ELEVATION (masl)	ANNUAL RAINFALL (mm)	CLIMATIC TYPE
Rubber Tree	S1	<8	>100	CL, SiCL, SCL, SC, SiC, C, HC	WD,MWD, SPD	5.6 -7.2	high	none-slight	none-slight	none-few	<500	1000-2000	III, IV
	S2	8 - 30	30 - 100	FSL, L, SiL, SL	PD,VPD	4.5 - 5.5 7.3 - 7.8	medium	moderate	moderate	common	500-1000	2001-4500	I, II, III
	S3	>30	<30	S, LS, CSL	ED	<4.5 - > 7.9	low	severe	severe	many	>1000	<1000 >4500	

SLOPE (%)

0 - 3 - level to gently sloping
3 - 8 - gently sloping to undulating
8 - 18 - undulating to rolling
18 - 30 - rolling to moderately steep
30 - 50 - steep
> 50 - very steep

SOIL DRAINAGE

ED - excessively drained
WD - well drained
MWD - moderately well drained
SPD - somewhat poorly drained
PD - poorly drained
VPD - very poorly drained

SOIL REACTION (pH)

< 4.5 - extremely acid
4.5 - 5.0 - very strongly acid
5.1 - 5.5 - strongly acid
5.6 - 6.0 - medium acid
6.1 - 6.5 - slightly acid
6.6 - 7.2 - neutral
7.3 - 7.8 - mildly alkaline
7.9 - 8.4 - moderately alkaline
> 8.5 - strongly alkaline

SOIL TEXTURE

Coarse

S - sand
LS - loamy sand
CSL - coarse sandy loam
SL - sandy loam

Medium

FSL - fine sandy loam
L - loam
SiL - silt loam
CL - clay loam
SiCL - silty clay loam
SCL - sandy clay loam

Fine

SC - sandy clay
SiC - silty clay
C - clay
HC - heavy clay

SOIL DEPTH (cm)

0 - 30 - very shallow
30 - 50 - shallow
50 - 100 - moderately deep
> 100 - deep to very deep

SURFACE IMPEDIMENT

ROCK OUTCROPS
< 10% - none - few
10 - 30% - common
> 30% - many

LAND LIMITATIONS DESCRIPTION AND COMBINATIONS

ELEVATION

EI2 - 500 - 1000m or 2000 - 2500m
EI3 - < 500m or > 2500m

SOIL DRAINAGE

D2 - Somewhat poorly drained to poorly drained
D3 - Very poorly drained or excessively drained

SOIL DEPTH

Sh2 - Shallow to moderately deep (30 - 100cm)
Sh3 - Very shallow (< 30cm)

SOIL EROSION

E2 - Moderate erosion
E3 - Severe erosion

SLOPE/TOPOGRAPHY

T2 - Undulating to moderately steep
T3 - Steep to very steep

SOIL TEXTURE

Tc - Coarse texture

ROCK OUTCROPS

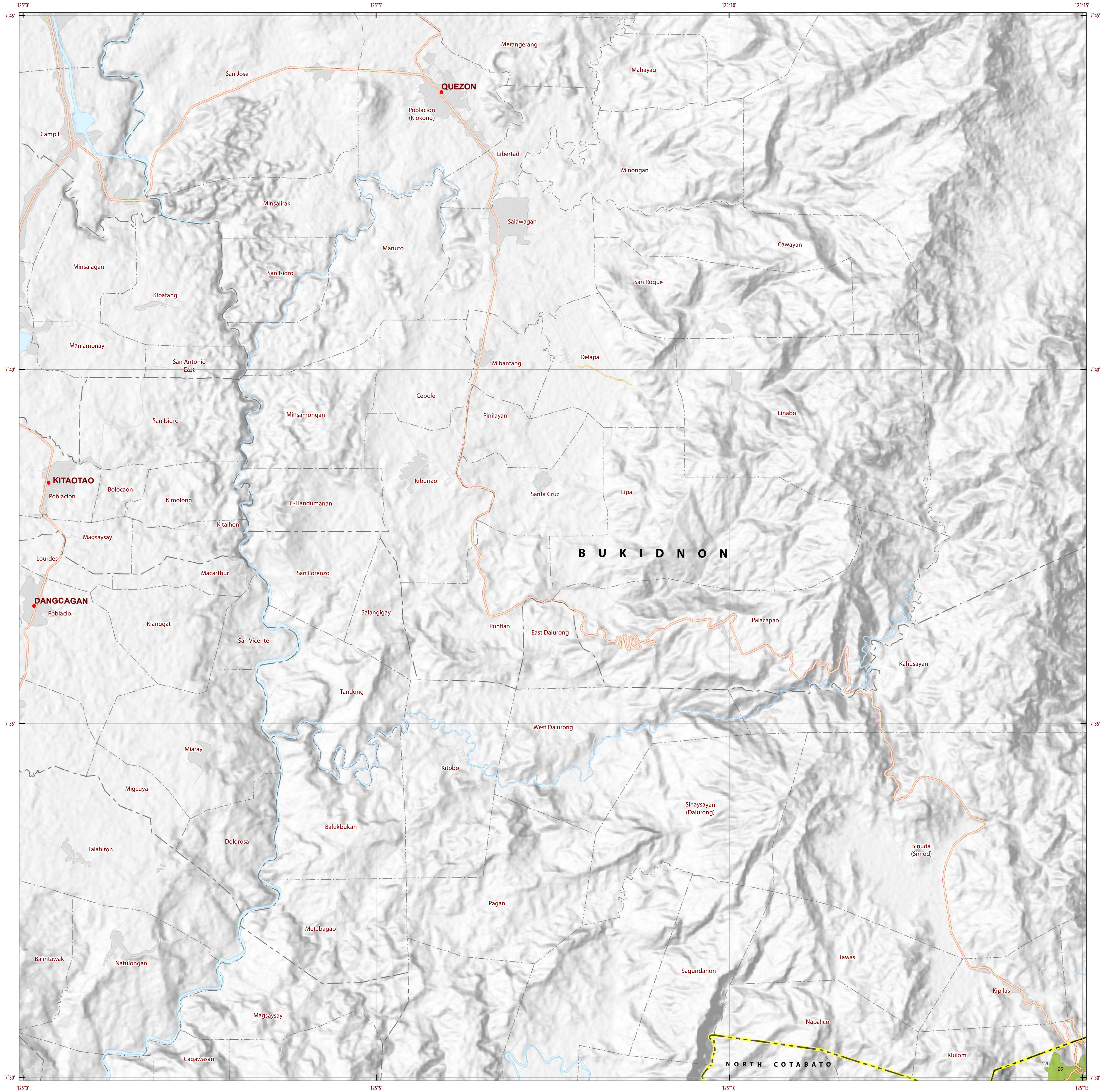
Rc2 - Common
Rc3 - Many

FLOODING

F2 - Moderate seasonal flooding
F3 - Severe seasonal flooding

CODE	LIMITATION	CODE	LIMITATION	CODE	LIMITATION	CODE	LIMITATION	CODE	LIMITATION	CODE	LIMITATION
1	EI2	11	T2-E3	21	T2-EI2-Sh2-Rc2	31	T3-E3	41	T3-EI3-E3-Sh3-Rc2	51	T3-EI3-E3-Sh3-Rc3
2	EI2-E2-Sh2-Rc3	12	T2-E3-Sh2-Rc2	22	T2-EI2-Sh2-Rc3	32	T3-E3-Sh3-Rc2	42	T3	52	T3-EI3
3	EI2-Sh2-Rc2	13	T2-E3-Sh2-Rc3	23	T2-EI3-E3	33	T3-E3-Sh3-Rc3	43	T3-E3		
4	EI3	14	T2-EI2	24	T2-EI3-E3-Sh2-Rc2	34	T3-EI2	44	T3-E3-Sh3-Rc3		
5	F2-D2	15	T2-EI2-E3	25	T2-EI3-E3-Sh2-Rc3	35	T3-EI2-E3	45	T3-EI2		
6	F3-D2	16	T2-EI2-E3-Rc2	26	T2-EI3-Sh2-Rc2	36	T3-EI2-E3-Rc2	46	T3-EI2-E3		
7	Sh2	17	T2-EI2-E3-Rc3	27	T2-F2-D2	37	T3-EI2-E3-Sh3-Rc2	47	T3-EI2-E3-Rc3		
8	Sh2-Rc2	18	T2-EI2-E3-Sh2-Rc2	28	T2-F3-D2	38	T3-EI2-E3-Sh3-Rc3	48	T3-EI2-E3-Sh3-Rc3		
9	T2	19	T2-EI2-E3-Sh2-Rc3	29	T2-Rc2	39	T3-EI3	49	T3-EI3		
10	T2-E2-Sh2-Rc2	20	T2-EI2-Rc2	30	T3	40	T3-EI3-E3	50	T3-EI3-E3		

CODE	LANDUSE	CODE	LANDUSE
4	Corn	134	Shrubs, unmanaged
34	Diversified crops		
84	Pineapple		
85	Mango		
91	Banana		
105	Fruit trees, mixed		
112	Sugarcane		
116	Coconut		
126	Grassland		
131	ipil ipil		



LAND SUITABILITY MAP RUBBER

LAND RESOURCES EVALUATION AND SUITABILITY ASSESSMENT OF STRATEGIC PRODUCTION AREAS



SCALE 1 : 50 000



Universal Transverse Mercator Zone 51 N, PRS 1992 Datum
DISCLAIMER : All political boundaries are not authoritative.

LEGEND

SUITABILITY CLASSES

- S1 Highly Suitable** - Land having no significant limitations to sustained application of a given use, or only minor limitations that will not significantly reduce productivity or benefits and will not raise inputs above an acceptable level.
- S2 Moderately Suitable** - Land having limitations which in aggregate are moderately severe for sustained application of a given use; the limitations will reduce productivity or benefits and increase required inputs to the extent that the overall advantage to be gained from the use, although still attractive, will be appreciably inferior to that expected on class S1 land.
- S3 Marginally Suitable** - Land having limitations which in aggregate are severe for sustained application of a given use and will so reduce productivity or benefits, or increase required inputs, that this expenditure will be only marginally justified.

Not Suitable/ Not Relevant

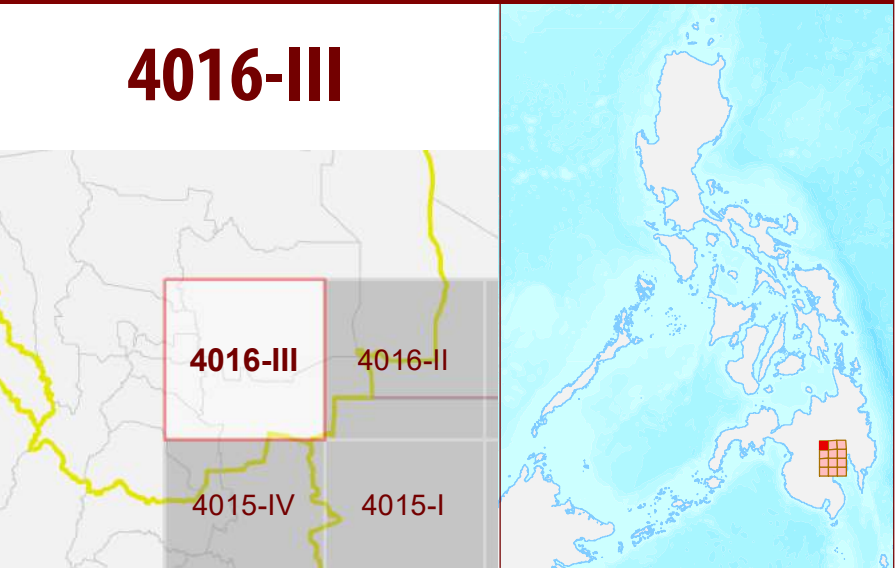
OTHER SIGNS

- NGP Areas
- Cacao
- Land limitation
- Land use

CONVENTIONAL SIGNS

- ROADS**
 - Expressway
 - Trunk line
 - Primary
 - Secondary
 - Tertiary
- BOUNDARY**
 - Region
 - Province
 - District
 - Municipality
 - Barangay
- HYDROLOGY**
 - Sea / Shoreline
 - Lakes / Rivers
- PLACES**
 - Capital City / City
 - Capital Town / Town
- LAND USE**
 - Built-up
 - Fishpond
 - Mangrove

ADJOINING SHEETS



MISCELLANEOUS INFORMATION

SOURCES OF INFORMATION : Topographic information taken from NAMRIA Topographic Map at 1:50,000 scale. Land resources information from the Agricultural Land Management and Evaluation Division (ALMED), Soils Survey Division (SSD) and Laboratory Services Division (LSD) of BSWM. Rice areas obtained from the Land Use System (FAO, 2015) and Philippine Rice Information System (PRISM) (IRRI, 2015). Data analysis and compilation through the **Land Resources Evaluation and Suitability Assessment of Strategic Production Areas for Major Commodities Project** implemented by BSWM (2017).

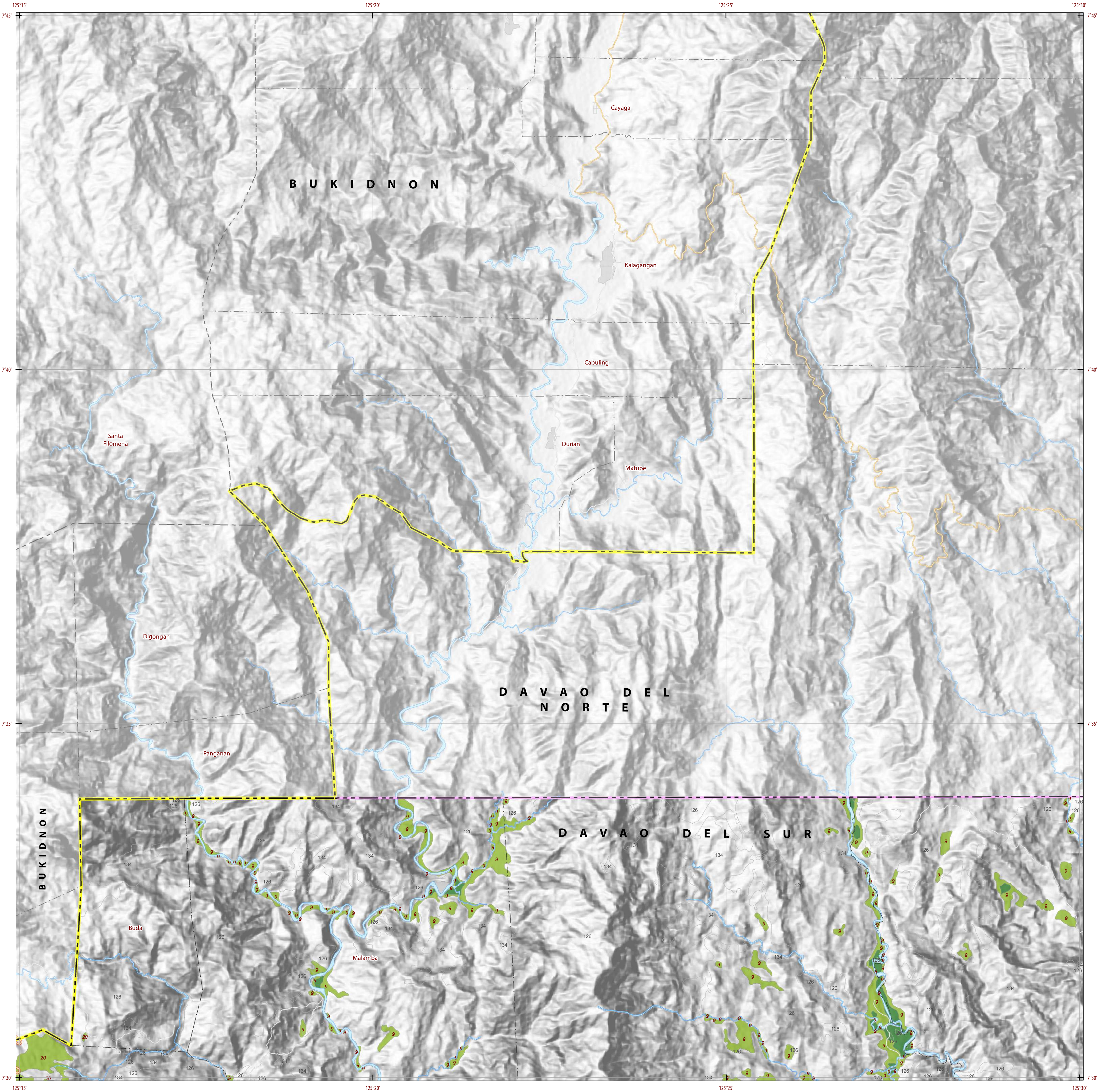
Project Leader : BERNARDO B. PASCUA
GIS and Cartography : IRVIN K. SAMALCA

Funding Agency : Department of Agriculture - Bureau of Agricultural Research (DA-BAR)
Collaborating Agencies : Philippine Council on Agriculture and Fisheries (PCAF)
: Department of Agriculture and Fisheries - ARMM, Department of Agriculture Regional Field Office of Region IX, X, XI, XII and XIII (Caraga)
: Local Government Unit (LGU) of covered provinces and municipalities

Map produced by the Geomatics and Soil Information Technology Division, Bureau of Soils and Water Management (BSWM).
Users noting errors or omissions in this publication are requested to inform the Bureau of Soils and Water Management.

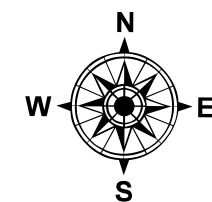
This publication is licensed under a Creative Commons Attribution 4.0 International License. Unless otherwise noted, copyright and any other intellectual property rights, in this publication is owned by the Philippine Government. This publication should be attributed as :
BSWM, 2019. *Land Suitability Map Series for Rubber of DAVAO CITY*
(50,000 Scale) . CC BY NC SA 4.0.

REPUBLIC OF THE PHILIPPINES
DEPARTMENT OF AGRICULTURE
BUREAU OF SOILS AND WATER MANAGEMENT
SRDC Bldg., Elliptical Road Cor. Visayas Avenue, Dilliman, Quezon City 1101
Tel/Fax No. : (+632) 332-9534 E-mail: bswmclientcenter@da.gov.ph

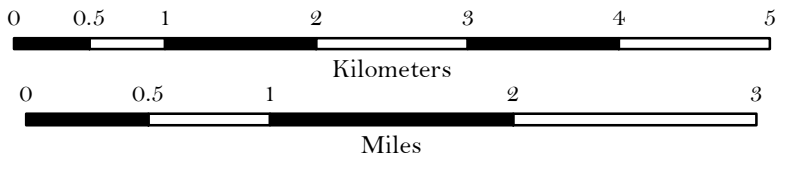


LAND SUITABILITY MAP
RUBBER

LAND RESOURCES EVALUATION AND SUITABILITY
ASSESSMENT OF STRATEGIC PRODUCTION AREAS



SCALE 1 : 50 000



Universal Transverse Mercator Zone 51 N, PRS 1992 Datum
DISCLAIMER : All political boundaries are not authoritative.

LEGEND

SUITABILITY CLASSES

- S1 Highly Suitable** - Land having no significant limitations to sustained application of a given use, or only minor limitations that will not significantly reduce productivity or benefits and will not raise inputs above an acceptable level.
- S2 Moderately Suitable** - Land having limitations which in aggregate are moderately severe for sustained application of a given use; the limitations will reduce productivity or benefits and increase required inputs to the extent that the overall advantage to be gained from the use, although still attractive, will be appreciably inferior to that expected on class S1 land.
- S3 Marginally Suitable** - Land having limitations which in aggregate are severe for sustained application of a given use and will so reduce productivity or benefits, or increase required inputs, that this expenditure will be only marginally justified.

Not Suitable/ Not Relevant

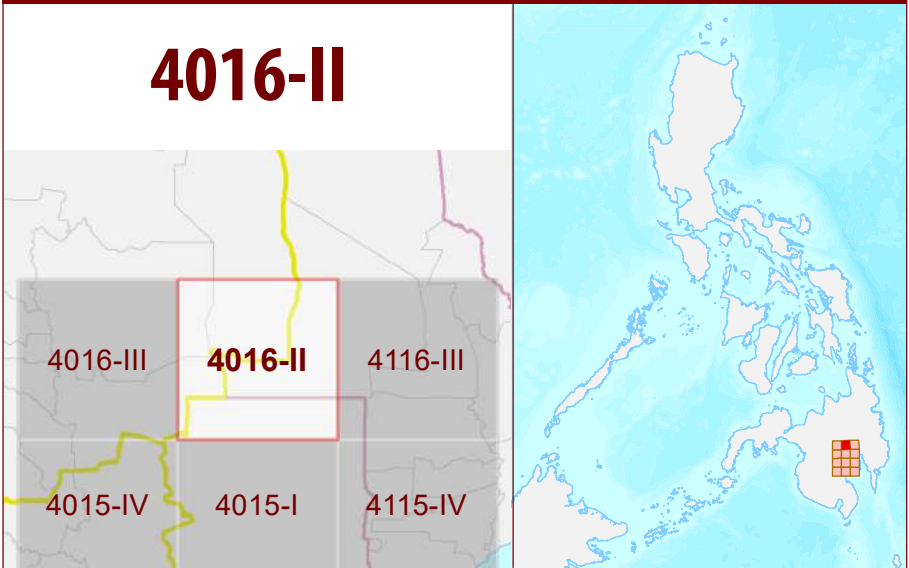
OTHER SIGNS

- NGP Areas
- Cacao
- Land limitation
- Land use

CONVENTIONAL SIGNS

- ROADS**
 - Expressway
 - Trunk line
 - Primary
 - Secondary
 - Tertiary
- BOUNDARY**
 - Region
 - Province
 - District
 - Municipality
 - Barangay
- HYDROLOGY**
 - Sea / Shoreline
 - Lakes / Rivers
- PLACES**
 - Capital City / City
 - Capital Town / Town
- LAND USE**
 - Built-up
 - Fishpond
 - Mangrove

ADJOINING SHEETS



MISCELLANEOUS INFORMATION

SOURCES OF INFORMATION : Topographic information taken from NAMRIA Topographic Map at 1:50,000 scale. Land resources information from the Agricultural Land Management and Evaluation Division (ALMED), Soil Survey Division (SSD) and Laboratory Services Division (LSD) of BSWM. Rice areas obtained from the Land Use System (FAO, 2015) and Philippine Rice Information System (PRISM) (IRRI, 2015). Data analysis and compilation through the **Land Resources Evaluation and Suitability Assessment of Strategic Production Areas for Major Commodities Project** implemented by BSWM (2017).

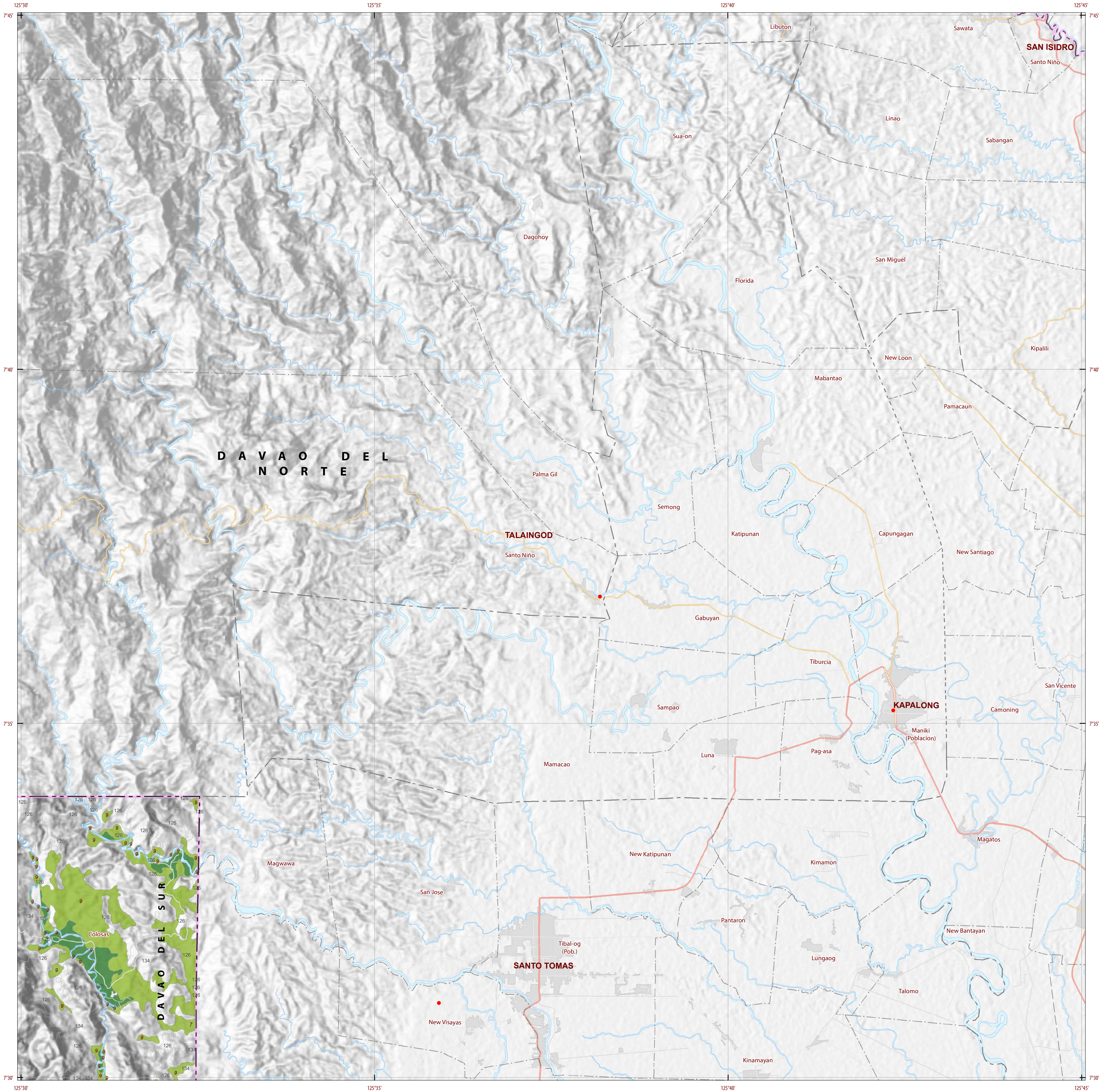
Project Leader : BERNARDO B. PASCUA
GIS and Cartography : IRVIN K. SAMALCA

Funding Agency : Department of Agriculture - Bureau of Agricultural Research (DA-BAR)
Collaborating Agencies : Philippine Council on Agriculture and Fisheries (PCAF)
: Department of Agriculture and Fisheries - ARMM, Department of Agriculture Regional Field Office of Region IX, X, XI, XII and XIII (Caraga)
: Local Government Unit (LGU) of covered provinces and municipalities

Map produced by the Geomatics and Soil Information Technology Division, Bureau of Soils and Water Management (BSWM). Users noting errors or omissions in this publication are requested to inform the Bureau of Soils and Water Management.

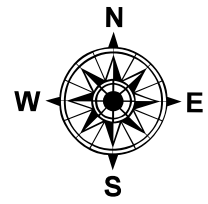
This publication is licensed under a Creative Commons Attribution 4.0 International License. Unless otherwise noted, copyright and any other intellectual property rights, in this publication is owned by the Philippine Government. This publication should be attributed as :
BSWM, 2019. *Land Suitability Map Series for Rubber of DAVAO CITY*
(50,000 Scale) . CC BY NC SA 4.0.

REPUBLIC OF THE PHILIPPINES
DEPARTMENT OF AGRICULTURE
BUREAU OF SOILS AND WATER MANAGEMENT
SRDC Bldg, Elliptical Road Cor. Visayas Avenue, Diliman, Quezon City 1101
Tel/Fax No. : (+632) 332-9534 E-mail : bswmcenter@da.gov.ph



LAND SUITABILITY MAP RUBBER

LAND RESOURCES EVALUATION AND SUITABILITY ASSESSMENT OF STRATEGIC PRODUCTION AREAS



SCALE 1 : 50 000



Universal Transverse Mercator Zone 51 N, PRS 1992 Datum
DISCLAIMER : All political boundaries are not authoritative.

LEGEND

SUITABILITY CLASSES

- S1 Highly Suitable** - Land having no significant limitations to sustained application of a given use, or only minor limitations that will not significantly reduce productivity or benefits and will not raise inputs above an acceptable level.
- S2 Moderately Suitable** - Land having limitations which in aggregate are moderately severe for sustained application of a given use; the limitations will reduce productivity or benefits and increase required inputs to the extent that the overall advantage to be gained from the use, although still attractive, will be appreciably inferior to that expected on class S1 land.
- S3 Marginally Suitable** - Land having limitations which in aggregate are severe for sustained application of a given use and will so reduce productivity or benefits, or increase required inputs, that this expenditure will be only marginally justified.

Not Suitable/ Not Relevant

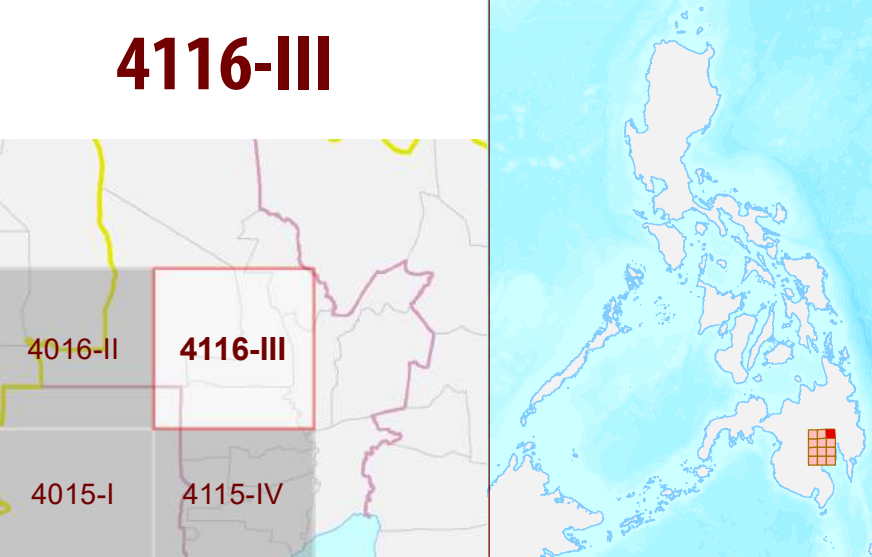
OTHER SIGNS

- NGP Areas
- Cacao
- Land limitation
- Land use

CONVENTIONAL SIGNS

- ROADS**
 - Expressway
 - Trunk line
 - Primary
 - Secondary
 - Tertiary
- BOUNDARY**
 - Region
 - Province
 - District
 - Municipality
 - Barangay
- HYDROLOGY**
 - Sea / Shoreline
 - Lakes / Rivers
- PLACES**
 - Capital City / City
 - Capital Town / Town
- LAND USE**
 - Built-up
 - Fishpond
 - Mangrove

ADJOINING SHEETS



MISCELLANEOUS INFORMATION

SOURCES OF INFORMATION : Topographic information taken from NAMRIA Topographic Map at 1:50,000 scale. Land resources information from the Agricultural Land Management and Evaluation Division (ALMED), Soils Survey Division (SSD) and Laboratory Services Division (LSD) of BSWM. Rice areas obtained from the Land Use System (FAO, 2015) and Philippine Rice Information System (PRISM) (IRRI, 2015). Data analysis and compilation through the **Land Resources Evaluation and Suitability Assessment of Strategic Production Areas for Major Commodities Project** implemented by BSWM (2017).

Project Leader : BERNARDO B. PASCUA
GIS and Cartography : IRVIN K. SAMALCA

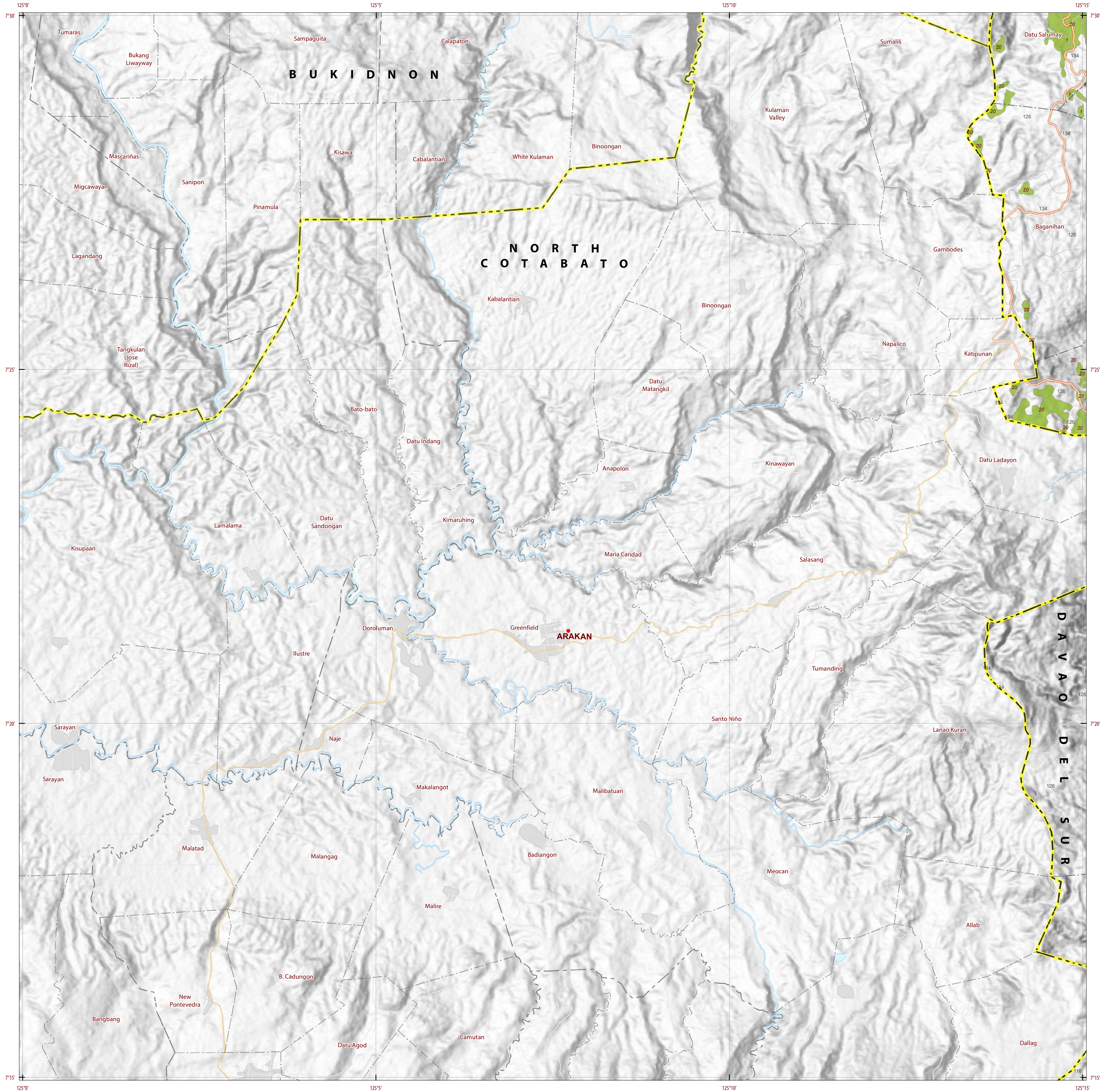
Funding Agency : Department of Agriculture - Bureau of Agricultural Research (DA-BAR)
Collaborating Agencies : Philippine Council on Agriculture and Fisheries (PCAF)
: Department of Agriculture and Fisheries - ARMM, Department of Agriculture Regional Field Office of Region IX, X, XI, XII and XIII (Caraga)
: Local Government Unit (LGU) of covered provinces and municipalities

Map produced by the Geomatics and Soil Information Technology Division, Bureau of Soils and Water Management (BSWM).
Users noting errors or omissions in this publication are requested to inform the Bureau of Soils and Water Management.



This publication is licensed under a Creative Commons Attribution 4.0 International License. Unless otherwise noted, copyright and any other intellectual property rights, in this publication is owned by the Philippine Government. This publication should be attributed as:
BSWM, 2019. Land Suitability Map Series for Rubber of DAVAO CITY (50,000 Scale) . CC BY NC SA 4.0.

REPUBLIC OF THE PHILIPPINES
DEPARTMENT OF AGRICULTURE
BUREAU OF SOILS AND WATER MANAGEMENT
SRDC Bldg, Elliptical Road Cor. Visayas Avenue, Diliman, Quezon City 1101
Tel/Fax No. : (+632) 332-9534 E-mail: bswmcenter@da.gov.ph



LAND SUITABILITY MAP
RUBBER

LAND RESOURCES EVALUATION AND SUITABILITY
ASSESSMENT OF STRATEGIC PRODUCTION AREAS



SCALE 1 : 50 000



Universal Transverse Mercator Zone 51 N, PRS 1992 Datum
DISCLAIMER : All political boundaries are not authoritative.

LEGEND

SUITABILITY CLASSES

- S1 Highly Suitable** - Land having no significant limitations to sustained application of a given use, or only minor limitations that will not significantly reduce productivity or benefits and will not raise inputs above an acceptable level.
- S2 Moderately Suitable** - Land having limitations which in aggregate are moderately severe for sustained application of a given use; the limitations will reduce productivity or benefits and increase required inputs to the extent that the overall advantage to be gained from the use, although still attractive, will be appreciably inferior to that expected on class S1 land.
- S3 Marginally Suitable** - Land having limitations which in aggregate are severe for sustained application of a given use and will so reduce productivity or benefits, or increase required inputs, that this expenditure will be only marginally justified.

Not Suitable/ Not Relevant

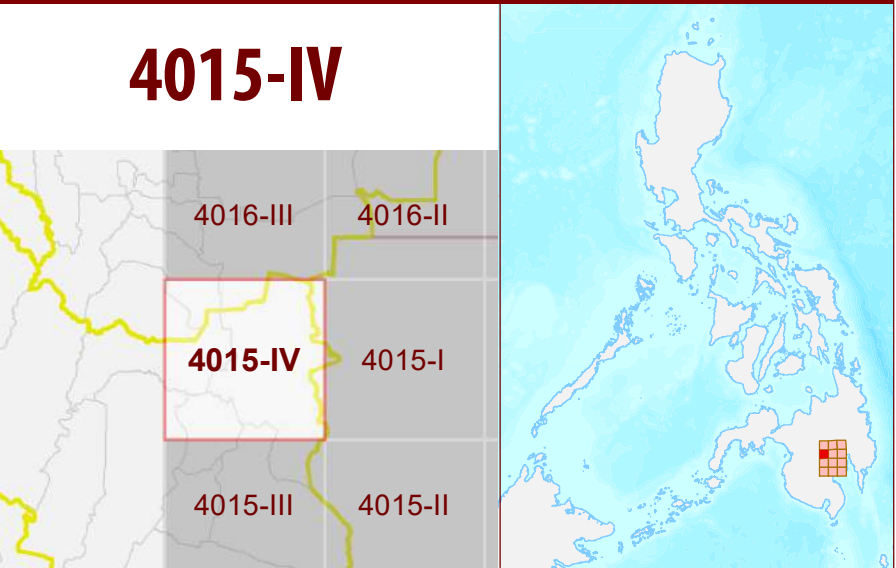
OTHER SIGNS

- NGP Areas
- Cacao
- Land limitation
- Land use

CONVENTIONAL SIGNS

- ROADS**
 - Expressway
 - Trunk line
 - Primary
 - Secondary
 - Tertiary
- BOUNDARY**
 - Region
 - Province
 - District
 - Municipality
 - Barangay
- HYDROLOGY**
 - Sea / Shoreline
 - Lakes / Rivers
- PLACES**
 - Capital City / City
 - Capital Town / Town
- LAND USE**
 - Built-up
 - Fishpond
 - Mangrove

ADJOINING SHEETS



MISCELLANEOUS INFORMATION

SOURCES OF INFORMATION : Topographic information taken from NAMRIA Topographic Map at 1:50,000 scale. Land resources information from the Agricultural Land Management and Evaluation Division (ALMED), Soils Survey Division (SSD) and Laboratory Services Division (LSD) of BSWM. Rice areas obtained from the Land Use System (FAO, 2015) and Philippine Rice Information System (PRISM) (IRRI, 2015). Data analysis and compilation through the **Land Resources Evaluation and Suitability Assessment of Strategic Production Areas for Major Commodities Project** implemented by BSWM (2017).

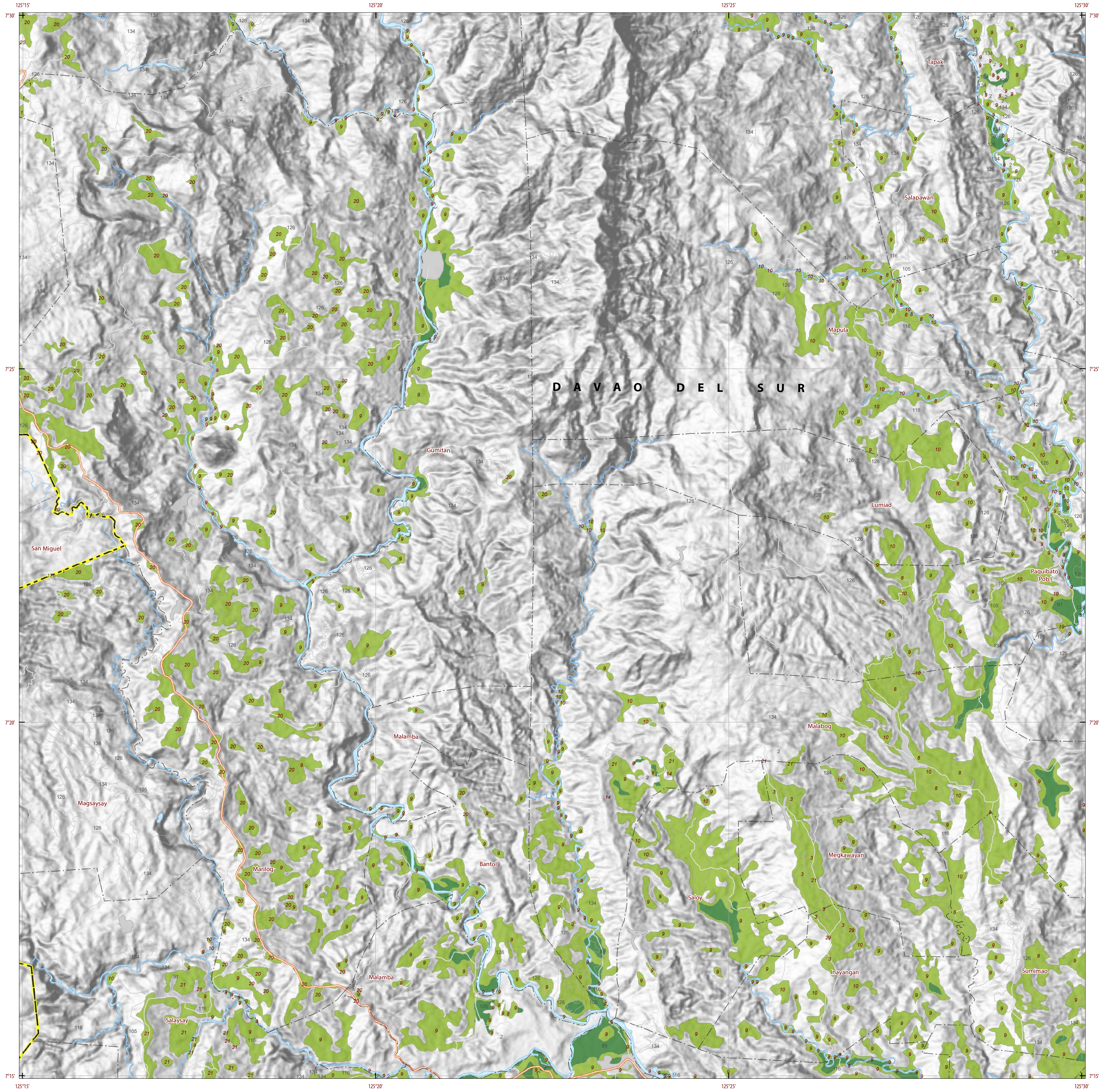
Project Leader : BERNARDO B. PASCUA
GIS and Cartography : IRVIN K. SAMALCA

Funding Agency : Department of Agriculture - Bureau of Agricultural Research (DA-BAR)
Collaborating Agencies : Philippine Council on Agriculture and Fisheries (PCAF)
: Department of Agriculture and Fisheries - ARMM, Department of Agriculture Regional Field Office of Region IX, X, XI, XII and XIII (Caraga)
: Local Government Unit (LGU) of covered provinces and municipalities

Map produced by the Geomatics and Soil Information Technology Division, Bureau of Soils and Water Management (BSWM).
Users noting errors or omissions in this publication are requested to inform the Bureau of Soils and Water Management.

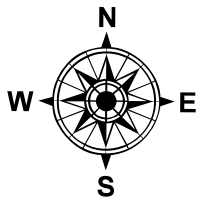
This publication is licensed under a Creative Commons Attribution 4.0 International License. Unless otherwise noted, copyright and any other intellectual property rights, in this publication is owned by the Philippine Government. This publication should be attributed as :
BSWM, 2019. *Land Suitability Map Series for Rubber of DAVAO CITY*
(50,000 Scale) . CC BY NC SA 4.0.

REPUBLIC OF THE PHILIPPINES
DEPARTMENT OF AGRICULTURE
BUREAU OF SOILS AND WATER MANAGEMENT
SRDC Bldg, Elliptical Road Cor. Visayas Avenue, Dilliman, Quezon City 1101
Tel/Fax No. : (+632) 332-9534 E-mail: bswmclientcenter@da.gov.ph



LAND SUITABILITY MAP RUBBER

LAND RESOURCES EVALUATION AND SUITABILITY ASSESSMENT OF STRATEGIC PRODUCTION AREAS



SCALE 1 : 50 000



Universal Transverse Mercator Zone 51 N, PRS 1992 Datum
DISCLAIMER : All political boundaries are not authoritative.

LEGEND

SUITABILITY CLASSES

- S1 Highly Suitable** - Land having no significant limitations to sustained application of a given use, or only minor limitations that will not significantly reduce productivity or benefits and will not raise inputs above an acceptable level.
- S2 Moderately Suitable** - Land having limitations which in aggregate are moderately severe for sustained application of a given use; the limitations will reduce productivity or benefits and increase required inputs to the extent that the overall advantage to be gained from the use, although still attractive, will be appreciably inferior to that expected on class S1 land.
- S3 Marginally Suitable** - Land having limitations which in aggregate are severe for sustained application of a given use and will so reduce productivity or benefits, or increase required inputs, that this expenditure will be only marginally justified.

Not Suitable/ Not Relevant

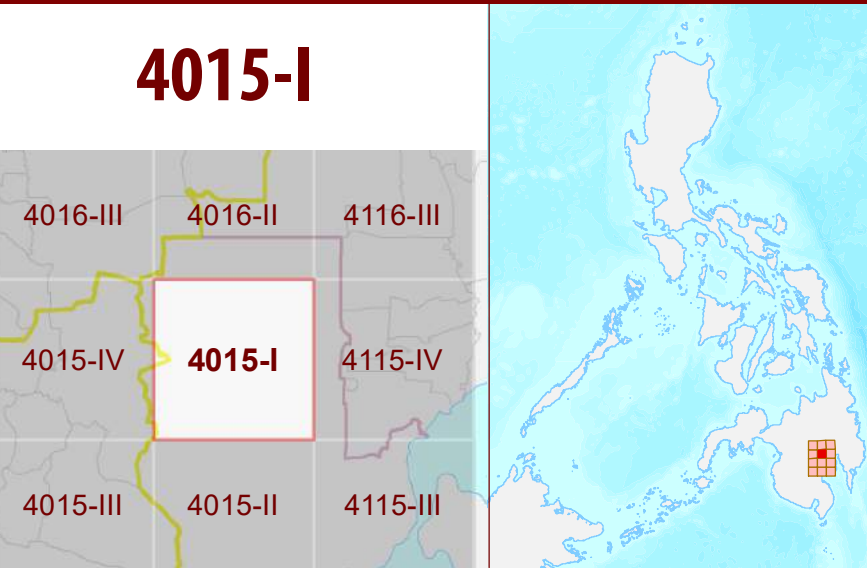
OTHER SIGNS

- NGP Areas
- Cacao
- Land limitation
- Land use

CONVENTIONAL SIGNS

- ROADS**
 - Expressway
 - Trunk line
 - Primary
 - Secondary
 - Tertiary
- BOUNDARY**
 - Region
 - Province
 - District
 - Municipality
 - Barangay
- HYDROLOGY**
 - Sea / Shoreline
 - Lakes / Rivers
- PLACES**
 - Capital City / City
 - Capital Town / Town
- LAND USE**
 - Built-up
 - Fishpond
 - Mangrove

ADJOINING SHEETS



MISCELLANEOUS INFORMATION

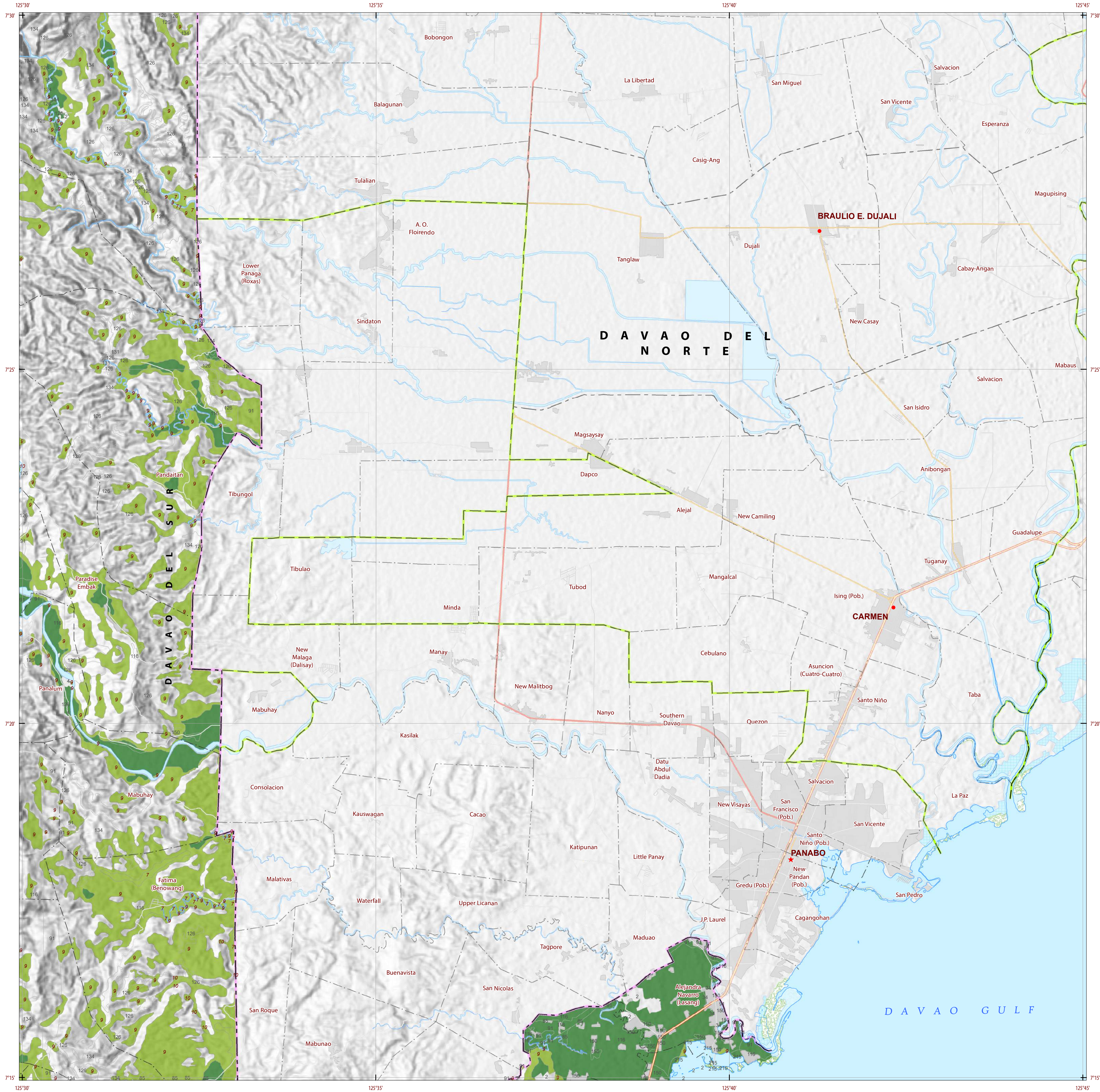
SOURCES OF INFORMATION : Topographic information taken from NAMRIA Topographic Map at 1:50,000 scale. Land resources information from the Agricultural Land Management and Evaluation Division (ALMED), Soils Survey Division (SSD) and Laboratory Services Division (LSD) of BSWM. Rice areas obtained from the Land Use System (FAO, 2015) and Philippine Rice Information System (PRISM) (IRRI, 2015). Data analysis and compilation through the **Land Resources Evaluation and Suitability Assessment of Strategic Production Areas for Major Commodities Project** implemented by BSWM (2017).

Project Leader : BERNARDO B. PASCUA
GIS and Cartography : IRVIN K. SAMALCA
Funding Agency : Department of Agriculture - Bureau of Agricultural Research (DA-BAR)
Collaborating Agencies : Philippine Council on Agriculture and Fisheries (PCAF)
: Department of Agriculture and Fisheries - ARMM, Department of Agriculture Regional Field Office of Region IX, X, XI, XII and XIII (Caraga)
: Local Government Unit (LGU) of covered provinces and municipalities

Map produced by the Geomatics and Soil Information Technology Division, Bureau of Soils and Water Management (BSWM). Users noting errors or omissions in this publication are requested to inform the Bureau of Soils and Water Management.

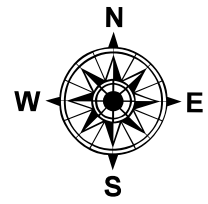
This publication is licensed under a Creative Commons Attribution 4.0 International License. Unless otherwise noted, copyright and any other intellectual property rights, in this publication is owned by the Philippine Government. This publication should be attributed as:
BSWM, 2019. *Land Suitability Map Series for Rubber of DAVAO CITY*
(50,000 Scale) - CC BY-NC-SA 4.0.

REPUBLIC OF THE PHILIPPINES
DEPARTMENT OF AGRICULTURE
BUREAU OF SOILS AND WATER MANAGEMENT
SRDC Bldg., Elliptical Road Cor. Visayas Avenue, Diliiman, Quezon City 1101
Tel/Fax No.: (+632) 332-9534 E-mail: bswmcenter@da.gov.ph



LAND SUITABILITY MAP RUBBER

LAND RESOURCES EVALUATION AND SUITABILITY ASSESSMENT OF STRATEGIC PRODUCTION AREAS



SCALE 1 : 50 000



Universal Transverse Mercator Zone 51 N, PRS 1992 Datum
DISCLAIMER : All political boundaries are not authoritative.

LEGEND

SUITABILITY CLASSES

- S1 Highly Suitable** - Land having no significant limitations to sustained application of a given use, or only minor limitations that will not significantly reduce productivity or benefits and will not raise inputs above an acceptable level.
- S2 Moderately Suitable** - Land having limitations which in aggregate are moderately severe for sustained application of a given use; the limitations will reduce productivity or benefits and increase required inputs to the extent that the overall advantage to be gained from the use, although still attractive, will be appreciably inferior to that expected on class S1 land.
- S3 Marginally Suitable** - Land having limitations which in aggregate are severe for sustained application of a given use and will so reduce productivity or benefits, or increase required inputs, that this expenditure will be only marginally justified.

Not Suitable/ Not Relevant

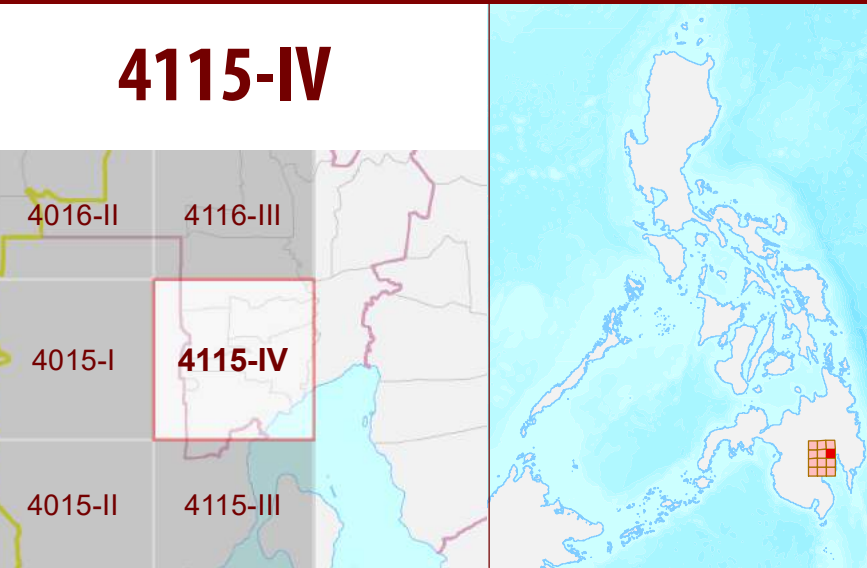
OTHER SIGNS

- NGP Areas
- Cacao
- Land limitation
- Land use

CONVENTIONAL SIGNS

- ROADS**
 - Expressway
 - Trunk line
 - Primary
 - Secondary
 - Tertiary
- BOUNDARY**
 - Region
 - Province
 - District
 - Municipality
 - Barangay
- HYDROLOGY**
 - Sea / Shoreline
 - Lakes / Rivers
- PLACES**
 - Capital City / City
 - Capital Town / Town
- LAND USE**
 - Built-up
 - Fishpond
 - Mangrove

ADJOINING SHEETS



MISCELLANEOUS INFORMATION

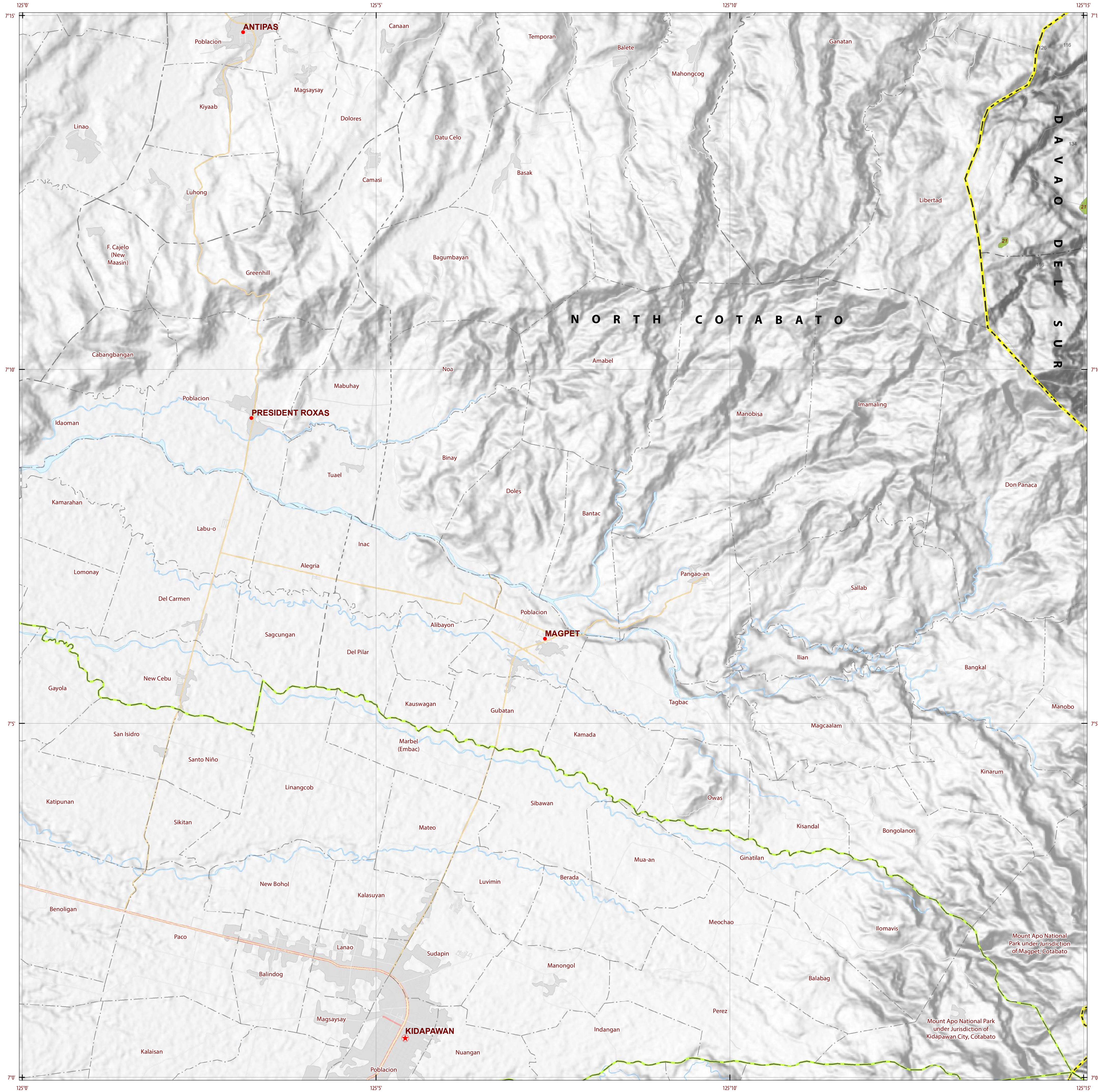
SOURCES OF INFORMATION : Topographic information taken from NAMRIA Topographic Map at 1:50,000 scale. Land resources information from the Agricultural Land Management and Evaluation Division (ALMED), Soils Survey Division (SSD) and Laboratory Services Division (LSD) of BSWM. Rice areas obtained from the Land Use System (FAO, 2015) and Philippine Rice Information System (PRISM) (IRRI, 2015). Data analysis and compilation through the **Land Resources Evaluation and Suitability Assessment of Strategic Production Areas for Major Commodities Project** implemented by BSWM (2017).

Project Leader : BERNARDO B. PASCUA
GIS and Cartography : IRVIN K. SAMALCA
Funding Agency : Department of Agriculture - Bureau of Agricultural Research (DA-BAR)
Collaborating Agencies : Philippine Council on Agriculture and Fisheries (PCAF)
: Department of Agriculture and Fisheries - ARMM, Department of Agriculture Regional Field Office of Region IX, X, XI, XII and XIII (Caraga)
: Local Government Unit (LGU) of covered provinces and municipalities

Map produced by the Geomatics and Soil Information Technology Division, Bureau of Soils and Water Management (BSWM). Users noting errors or omissions in this publication are requested to inform the Bureau of Soils and Water Management.

This publication is licensed under a Creative Commons Attribution 4.0 International License. Unless otherwise noted, copyright and any other intellectual property rights, in this publication is owned by the Philippine Government. This publication should be attributed as:
BSWM, 2019. *Land Suitability Map Series for Rubber of DAVAO CITY* (50,000 Scale) . CC BY NC SA 4.0.

REPUBLIC OF THE PHILIPPINES
DEPARTMENT OF AGRICULTURE
BUREAU OF SOILS AND WATER MANAGEMENT
SRDC Bldg, Elliptical Road Cor. Visayas Avenue, Dilliman, Quezon City 1101
Tel/Fax No. : (+632) 332-9534 E-mail: bswmcenter@da.gov.ph



LAND SUITABILITY MAP RUBBER

LAND RESOURCES EVALUATION AND SUITABILITY ASSESSMENT OF STRATEGIC PRODUCTION AREAS



SCALE 1 : 50 000



Universal Transverse Mercator Zone 51 N, PRS 1992 Datum
DISCLAIMER : All political boundaries are not authoritative.

LEGEND

SUITABILITY CLASSES

- S1 Highly Suitable** - Land having no significant limitations to sustained application of a given use, or only minor limitations that will not significantly reduce productivity or benefits and will not raise inputs above an acceptable level.
- S2 Moderately Suitable** - Land having limitations which in aggregate are moderately severe for sustained application of a given use; the limitations will reduce productivity or benefits and increase required inputs to the extent that the overall advantage to be gained from the use, although still attractive, will be appreciably inferior to that expected on class S1 land.
- S3 Marginally Suitable** - Land having limitations which in aggregate are severe for sustained application of a given use and will so reduce productivity or benefits, or increase required inputs, that this expenditure will be only marginally justified.

Not Suitable/ Not Relevant

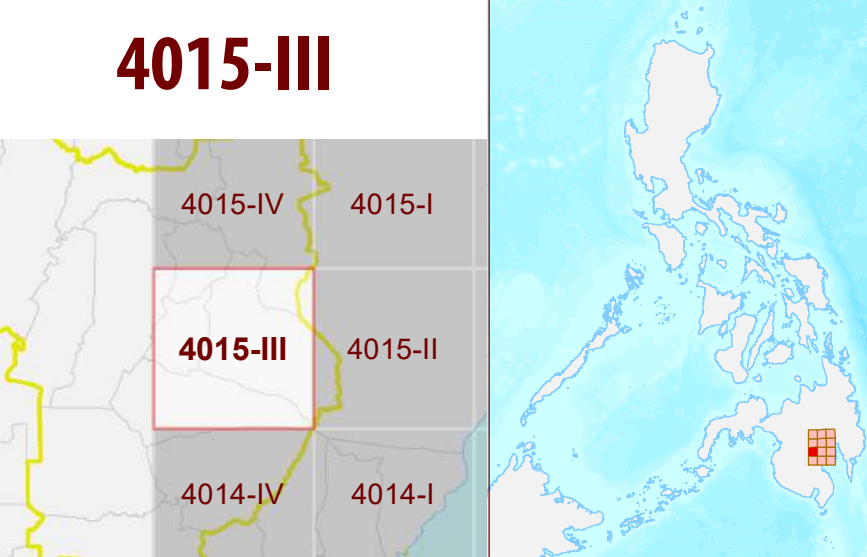
OTHER SIGNS

- NGP Areas
- Cacao
- Land limitation
- Land use

CONVENTIONAL SIGNS

- ROADS**
 - Expressway
 - Trunk line
 - Primary
 - Secondary
 - Tertiary
- BOUNDARY**
 - Region
 - Province
 - District
 - Municipality
 - Barangay
- HYDROLOGY**
 - Sea / Shoreline
 - Lakes / Rivers
- PLACES**
 - Capital City / City
 - Capital Town / Town
- LAND USE**
 - Built-up
 - Fishpond
 - Mangrove

ADJOINING SHEETS



MISCELLANEOUS INFORMATION

SOURCES OF INFORMATION : Topographic information taken from NAMRIA Topographic Map at 1:50,000 scale. Land resources information from the Agricultural Land Management and Evaluation Division (ALMED), Soil Survey Division (SSD) and Laboratory Services Division (LSD) of BSWM. Rice areas obtained from the Land Use System (FAO, 2015) and Philippine Rice Information System (PRISM) (IRRI, 2015). Data analysis and compilation through the **Land Resources Evaluation and Suitability Assessment of Strategic Production Areas for Major Commodities Project** implemented by BSWM (2017).

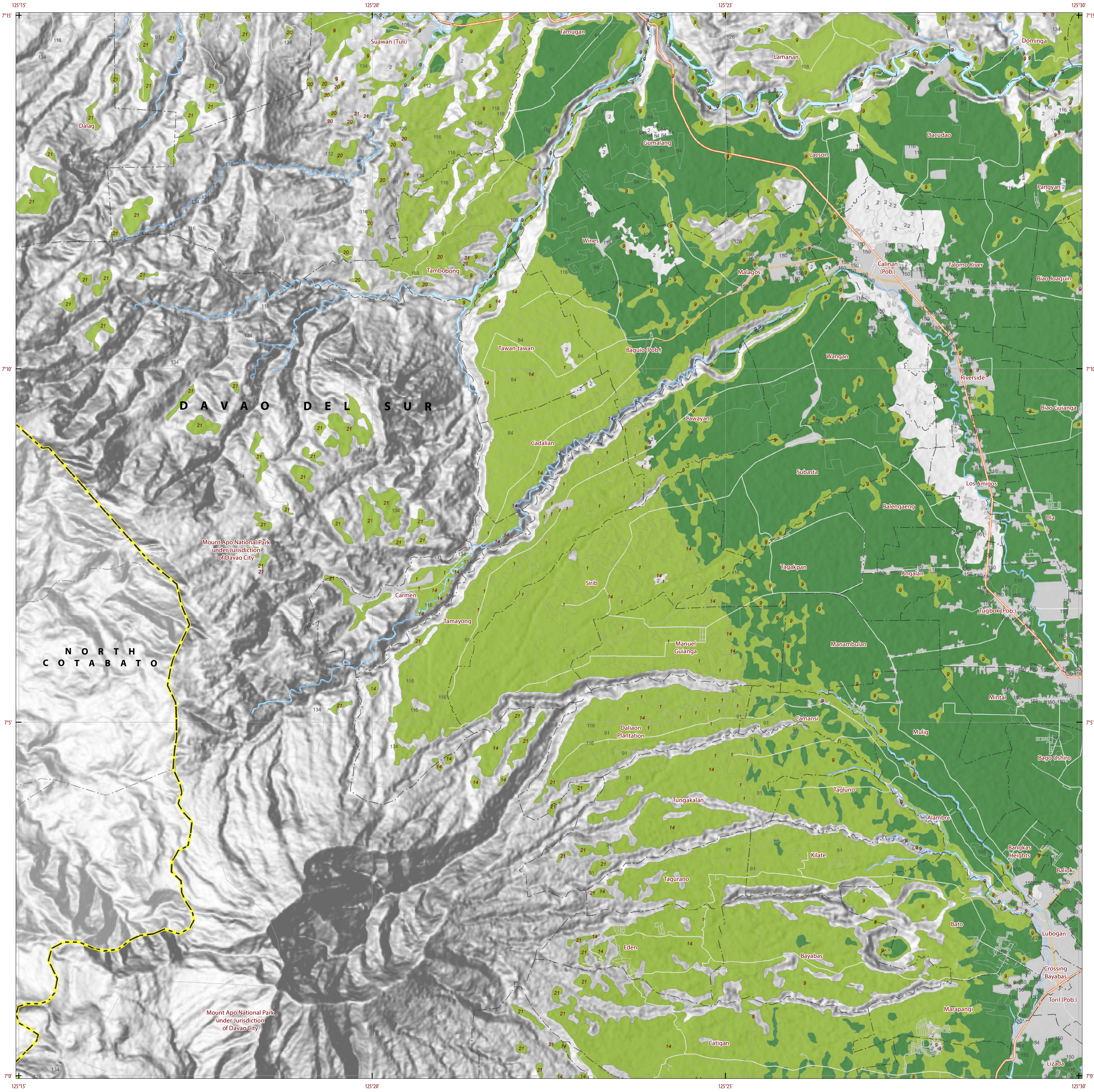
Project Leader : BERNARDO B. PASCUA
GIS and Cartography : IRVIN K. SAMALCA

Funding Agency : Department of Agriculture - Bureau of Agricultural Research (DA-BAR)
Collaborating Agencies : Philippine Council on Agriculture and Fisheries (PCAF)
: Department of Agriculture and Fisheries - ARMM, Department of Agriculture Regional Field Office of Region IX, X, XI, XII and XIII (Caraga)
: Local Government Unit (LGU) of covered provinces and municipalities

Map produced by the Geomatics and Soil Information Technology Division, Bureau of Soils and Water Management (BSWM).
Users noting errors or omissions in this publication are requested to inform the Bureau of Soils and Water Management.

This publication is licensed under a Creative Commons Attribution 4.0 International License. Unless otherwise noted, copyright and any other intellectual property rights, in this publication is owned by the Philippine Government. This publication should be attributed as:
BSWM, 2019. *Land Suitability Map Series for Rubber of DAVAO CITY*
(50,000 Scale) . CC BY NC SA 4.0.

REPUBLIC OF THE PHILIPPINES
DEPARTMENT OF AGRICULTURE
BUREAU OF SOILS AND WATER MANAGEMENT
SRDC Bldg, Elliptical Road Cor. Visayas Avenue, Diliiman, Quezon City 1101
Tel/Fax No. : (+632) 332-9534 E-mail: bswmclientcenter@da.gov.ph

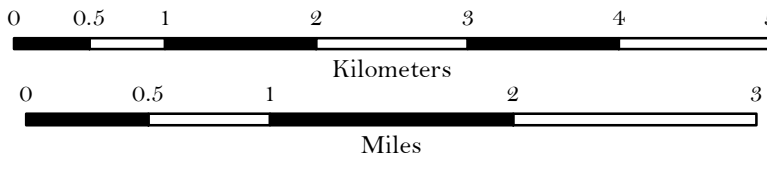


LAND SUITABILITY MAP RUBBER

LAND RESOURCES EVALUATION AND SUITABILITY ASSESSMENT OF STRATEGIC PRODUCTION AREAS



SCALE 1 : 50 000



Universal Transverse Mercator Zone 51 N, PRS 1992 Datum
DISCLAIMER : All political boundaries are not authoritative.

LEGEND

SUITABILITY CLASSES

- S1 Highly Suitable** - Land having no significant limitations to sustained application of a given use, or only minor limitations that will not significantly reduce productivity or benefits and will not raise inputs above an acceptable level.
- S2 Moderately Suitable** - Land having limitations which in aggregate are moderately severe for sustained application of a given use; the limitations will reduce productivity or benefits and increase required inputs to the extent that the overall advantage to be gained from the use, although still attractive, will be appreciably inferior to that expected on class S1 land.
- S3 Marginally Suitable** - Land having limitations which in aggregate are severe for sustained application of a given use and will so reduce productivity or benefits, or increase required inputs, that this expenditure will be only marginally justified.

Not Suitable/ Not Relevant

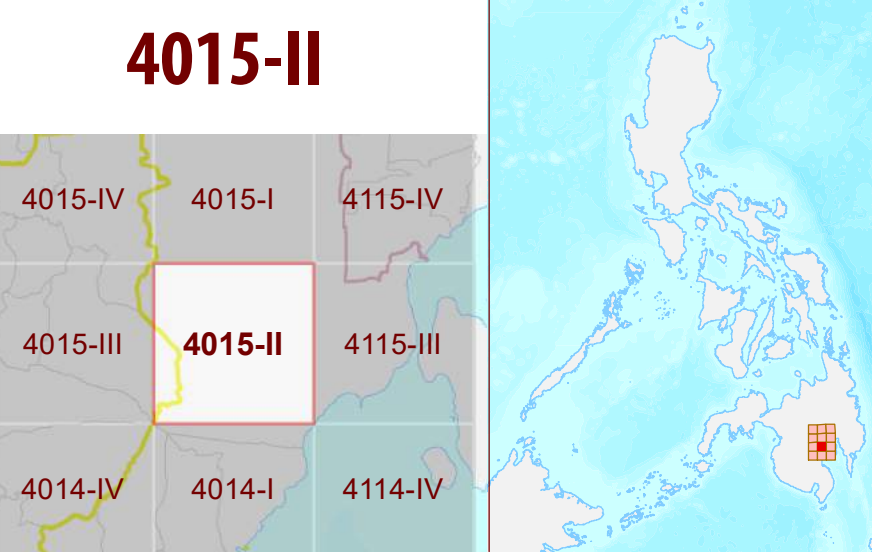
OTHER SIGNS

- NGP Areas
- Cacao
- Land limitation
- Land use

CONVENTIONAL SIGNS

- ROADS**
 - Expressway
 - Trunk line
 - Primary
 - Secondary
 - Tertiary
- BOUNDARY**
 - Region
 - Province
 - District
 - Municipality
 - Barangay
- HYDROLOGY**
 - Sea / Shoreline
 - Lakes / Rivers
- PLACES**
 - Capital City / City
 - Capital Town / Town
- LAND USE**
 - Built-up
 - Fishpond
 - Mangrove

ADJOINING SHEETS



MISCELLANEOUS INFORMATION

SOURCES OF INFORMATION : Topographic information taken from NAMRIA Topographic Map at 1:50,000 scale. Land resources information from the Agricultural Land Management and Evaluation Division (ALMED), Soil Survey Division (SSD) and Laboratory Services Division (LSD) of BSWM. Rice areas obtained from the Land Use System (FAO, 2015) and Philippine Rice Information System (PRISM) (IRRI, 2015). Data analysis and compilation through the **Land Resources Evaluation and Suitability Assessment of Strategic Production Areas for Major Commodities Project** implemented by BSWM (2017).

Project Leader : BERNARDO B. PASCUA
GIS and Cartography : IRVIN K. SAMALCA
Funding Agency : Department of Agriculture - Bureau of Agricultural Research (DA-BAR)
Collaborating Agencies : Philippine Council on Agriculture and Fisheries (PCAF)
: Department of Agriculture and Fisheries - ARMM, Department of Agriculture Regional Field Office of Region IX, X, XI, XII and XIII (Caraga)
: Local Government Unit (LGU) of covered provinces and municipalities

Map produced by the Geomatics and Soil Information Technology Division, Bureau of Soils and Water Management (BSWM). Users noting errors or omissions in this publication are requested to inform the Bureau of Soils and Water Management.



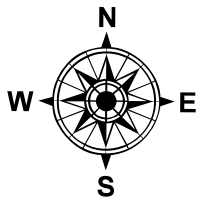
This publication is licensed under a Creative Commons Attribution 4.0 International License. Unless otherwise noted, copyright and any other intellectual property rights, in this publication is owned by the Philippine Government. This publication should be attributed as:
BSWM, 2019. Land Suitability Map Series for Rubber of DAVAO CITY (50,000 Scale). CC BY NC SA 4.0.

REPUBLIC OF THE PHILIPPINES
DEPARTMENT OF AGRICULTURE
BUREAU OF SOILS AND WATER MANAGEMENT
SRDC Bldg, Elliptical Road Cor. Visayas Avenue, Dilliman, Quezon City 1101
Tel/Fax No.: (+632) 332-9534 E-mail: bswmcenter@da.gov.ph



LAND SUITABILITY MAP
RUBBER

LAND RESOURCES EVALUATION AND SUITABILITY
ASSESSMENT OF STRATEGIC PRODUCTION AREAS



SCALE 1 : 50 000



Universal Transverse Mercator Zone 51 N, PRS 1992 Datum
DISCLAIMER : All political boundaries are not authoritative.

LEGEND

SUITABILITY CLASSES

- S1 Highly Suitable** - Land having no significant limitations to sustained application of a given use, or only minor limitations that will not significantly reduce productivity or benefits and will not raise inputs above an acceptable level.
- S2 Moderately Suitable** - Land having limitations which in aggregate are moderately severe for sustained application of a given use; the limitations will reduce productivity or benefits and increase required inputs to the extent that the overall advantage to be gained from the use, although still attractive, will be appreciably inferior to that expected on class S1 land.
- S3 Marginally Suitable** - Land having limitations which in aggregate are severe for sustained application of a given use and will so reduce productivity or benefits, or increase required inputs, that this expenditure will be only marginally justified.

Not Suitable/ Not Relevant

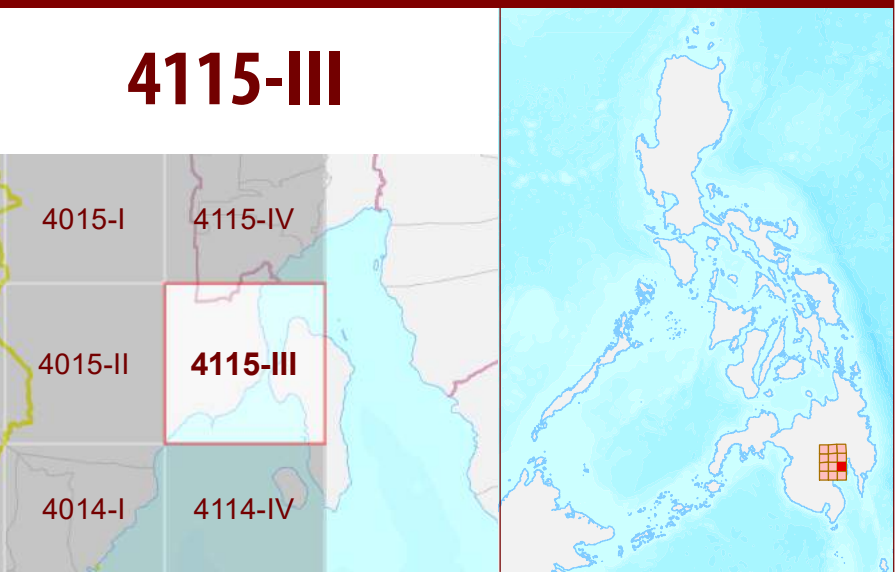
OTHER SIGNS

- NGP Areas
- Cacao
- Land limitation
- Land use

CONVENTIONAL SIGNS

- ROADS**
 - Expressway
 - Trunk line
 - Primary
 - Secondary
 - Tertiary
- BOUNDARY**
 - Region
 - Province
 - District
 - Municipality
 - Barangay
- HYDROLOGY**
 - Sea / Shoreline
 - Lakes / Rivers
- PLACES**
 - Capital City / City
 - Capital Town / Town
- LAND USE**
 - Built-up
 - Fishpond
 - Mangrove

ADJOINING SHEETS



MISCELLANEOUS INFORMATION

SOURCES OF INFORMATION : Topographic information taken from NAMRIA Topographic Map at 1:50,000 scale. Land resources information from the Agricultural Land Management and Evaluation Division (ALMED), Soil Survey Division (SSD) and Laboratory Services Division (LSD) of BSWM. Rice areas obtained from the Land Use System (FAO, 2015) and Philippine Rice Information System (PRISM) (IRRI, 2015). Data analysis and compilation through the **Land Resources Evaluation and Suitability Assessment of Strategic Production Areas for Major Commodities Project** implemented by BSWM (2017).

Project Leader : BERNARDO B. PASCUA
GIS and Cartography : IRVIN K. SAMALCA
Funding Agency : Department of Agriculture - Bureau of Agricultural Research (DA-BAR)
Collaborating Agencies : Philippine Council on Agriculture and Fisheries (PCAF)
: Department of Agriculture and Fisheries - ARMM, Department of Agriculture Regional Field Office of Region IX, X, XI, XII and XIII (Caraga)
: Local Government Unit (LGU) of covered provinces and municipalities

Map produced by the Geomatics and Soil Information Technology Division, Bureau of Soils and Water Management (BSWM). Users noting errors or omissions in this publication are requested to inform the Bureau of Soils and Water Management.



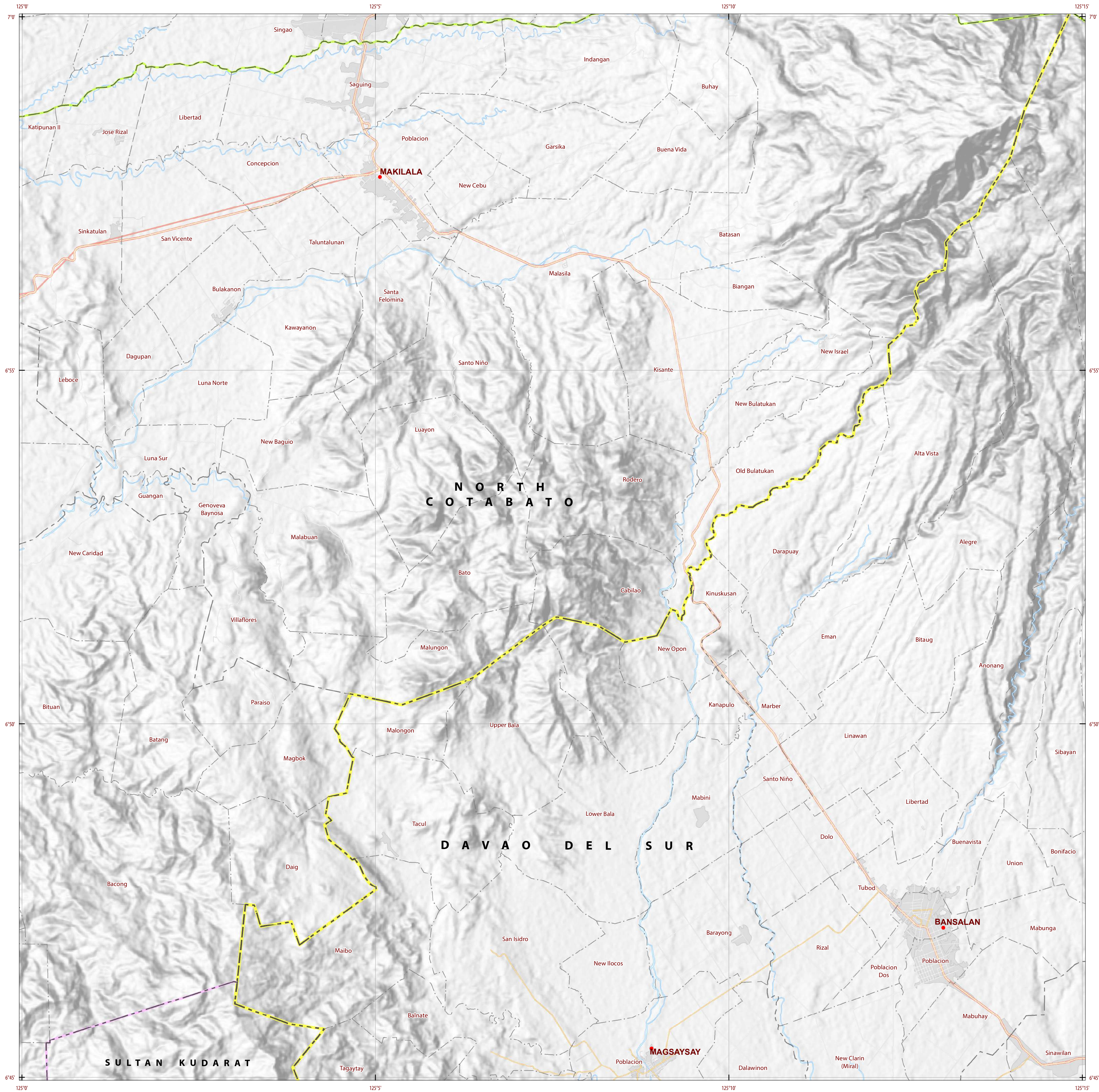
This publication is licensed under a Creative Commons Attribution 4.0 International License. Unless otherwise noted, copyright and any other intellectual property rights, in this publication is owned by the Philippine Government. This publication should be attributed as:
BSWM, 2019. *Land Suitability Map Series for Rubber of DAVAO CITY* (50,000 Scale). CC BY-NC-SA 4.0.

REPUBLIC OF THE PHILIPPINES
DEPARTMENT OF AGRICULTURE
BUREAU OF SOILS AND WATER MANAGEMENT
SRDC Bldg., Elliptical Road Cor. Visayas Avenue, Dilliman, Quezon City 1101
Tel/Fax No.: (+632) 332-9534 E-mail: bswmclientcenter@yahoo.com

4014-IV

DAVAO CITY

Malasila



LAND SUITABILITY MAP
RUBBER

LAND RESOURCES EVALUATION AND SUITABILITY
ASSESSMENT OF STRATEGIC PRODUCTION AREAS



SCALE 1 : 50 000



Universal Transverse Mercator Zone 51 N, PRS 1992 Datum
DISCLAIMER : All political boundaries are not authoritative.

LEGEND

SUITABILITY CLASSES

- S1 Highly Suitable** - Land having no significant limitations to sustained application of a given use, or only minor limitations that will not significantly reduce productivity or benefits and will not raise inputs above an acceptable level.
- S2 Moderately Suitable** - Land having limitations which in aggregate are moderately severe for sustained application of a given use; the limitations will reduce productivity or benefits and increase required inputs to the extent that the overall advantage to be gained from the use, although still attractive, will be appreciably inferior to that expected on class S1 land.
- S3 Marginally Suitable** - Land having limitations which in aggregate are severe for sustained application of a given use and will so reduce productivity or benefits, or increase required inputs, that this expenditure will be only marginally justified.

Not Suitable/ Not Relevant

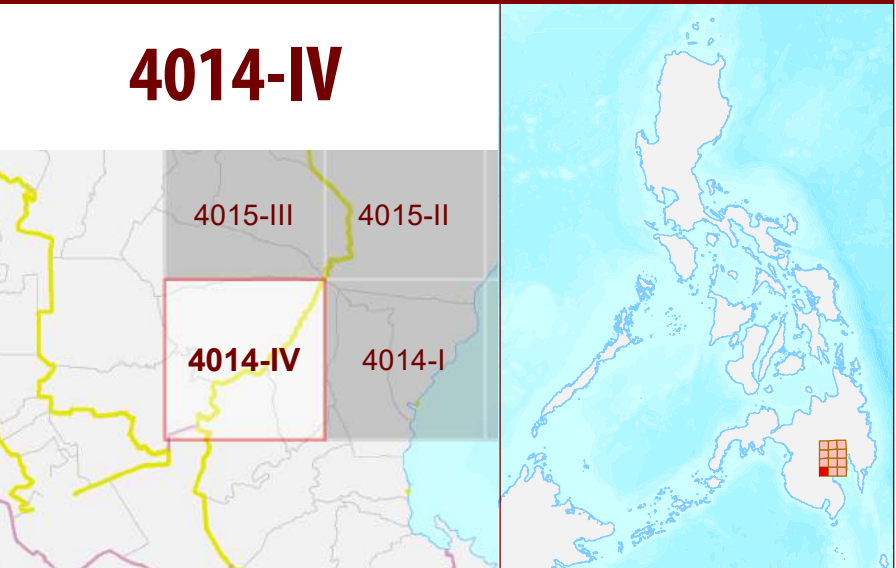
OTHER SIGNS

- NGP Areas
Cacao
Land limitation
Land use

CONVENTIONAL SIGNS

- ROADS**
Expressway
Trunk line
Primary
Secondary
Tertiary
- BOUNDARY**
Region
Province
District
Municipality
Barangay
- HYDROLOGY**
Sea / Shoreline
Lakes / Rivers
- PLACES**
Capital City / City
Capital Town / Town
- LAND USE**
Built-up
Fishpond
Mangrove

ADJOINING SHEETS



MISCELLANEOUS INFORMATION

SOURCES OF INFORMATION : Topographic information taken from NAMRIA Topographic Map at 1:50,000 scale. Land resources information from the Agricultural Land Management and Evaluation Division (ALMED), Soil Survey Division (SSD) and Laboratory Services Division (LSD) of BSWM. Rice areas obtained from the Land Use System (FAO, 2015) and Philippine Rice Information System (PRISM) (IRRI, 2015). Data analysis and compilation through the **Land Resources Evaluation and Suitability Assessment of Strategic Production Areas for Major Commodities Project** implemented by BSWM (2017).

Project Leader : BERNARDO B. PASCUA
GIS and Cartography : IRVIN K. SAMALCA

Funding Agency : Department of Agriculture - Bureau of Agricultural Research (DA-BAR)
Collaborating Agencies : Philippine Council on Agriculture and Fisheries (PCAF)
: Department of Agriculture and Fisheries - ARMM, Department of Agriculture Regional Field Office of Region IX, X, XI, XII and XIII (Caraga)
: Local Government Unit (LGU) of covered provinces and municipalities

Map produced by the Geomatics and Soil Information Technology Division, Bureau of Soils and Water Management (BSWM).
Users noting errors or omissions in this publication are requested to inform the Bureau of Soils and Water Management.

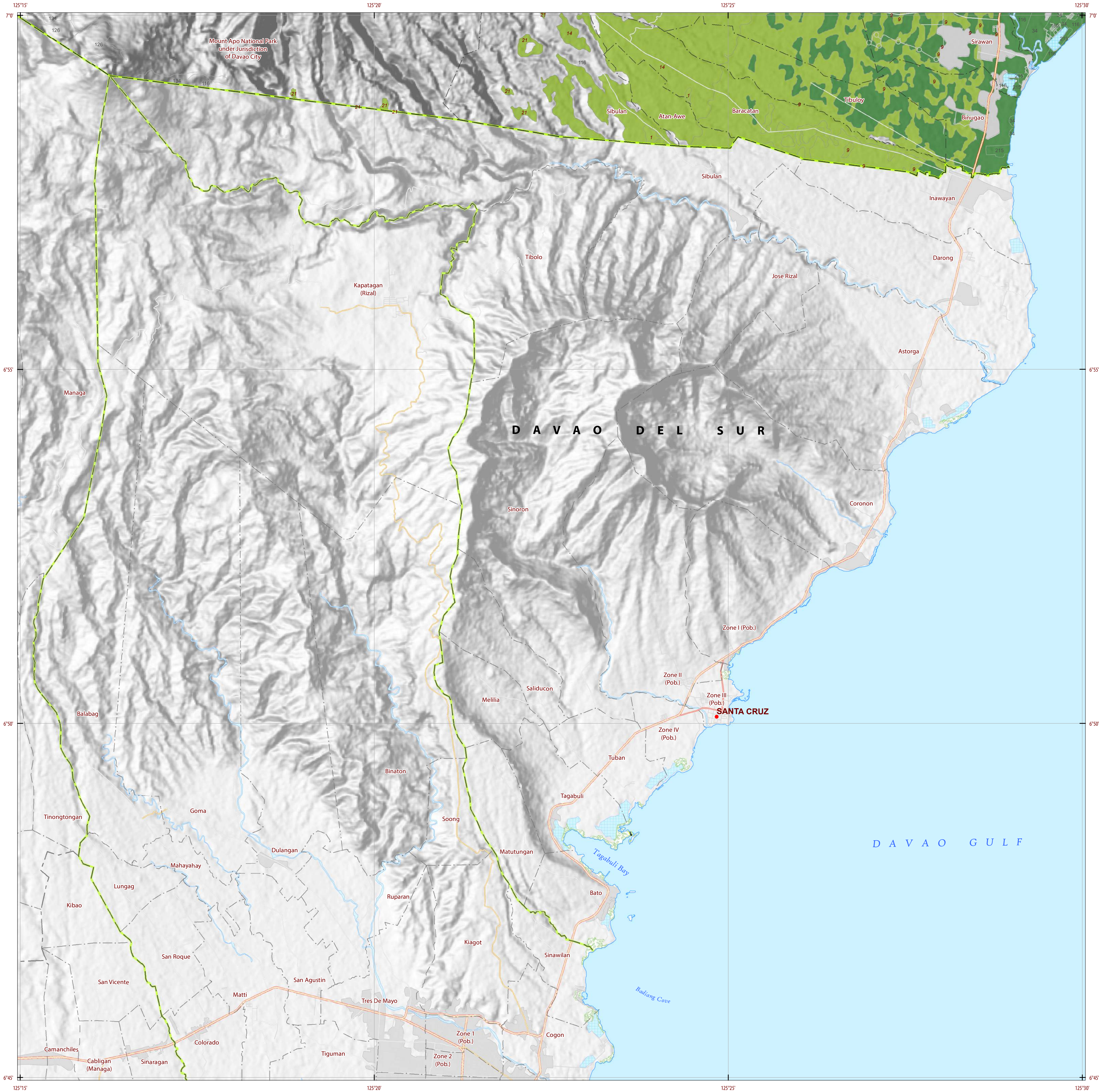


This publication is licensed under a Creative Commons Attribution 4.0 International License. Unless otherwise noted, copyright and any other intellectual property rights, in this publication is owned by the Philippine Government. This publication should be attributed as:
BSWM, 2019. *Land Suitability Map Series for Rubber of DAVAO CITY* (50,000 Scale). CC BY NC SA 4.0.

REPUBLIC OF THE PHILIPPINES
DEPARTMENT OF AGRICULTURE
BUREAU OF SOILS AND WATER MANAGEMENT
SRDC Bldg., Elliptical Road Cor. Visayas Avenue, Diliman, Quezon City 1101
Tel/Fax No.: (+632) 332-9534 E-mail: bswmcenter@da.gov.ph

DAVAO CITY

Sheet 10 of 12 Sheet No. 4014-IV



LAND SUITABILITY MAP RUBBER

LAND RESOURCES EVALUATION AND SUITABILITY ASSESSMENT OF STRATEGIC PRODUCTION AREAS



SCALE 1 : 50 000



Universal Transverse Mercator Zone 51 N, PRS 1992 Datum
DISCLAIMER : All political boundaries are not authoritative.

LEGEND

SUITABILITY CLASSES

- S1 Highly Suitable** - Land having no significant limitations to sustained application of a given use, or only minor limitations that will not significantly reduce productivity or benefits and will not raise inputs above an acceptable level.
- S2 Moderately Suitable** - Land having limitations which in aggregate are moderately severe for sustained application of a given use; the limitations will reduce productivity or benefits and increase required inputs to the extent that the overall advantage to be gained from the use, although still attractive, will be appreciably inferior to that expected on class S1 land.
- S3 Marginally Suitable** - Land having limitations which in aggregate are severe for sustained application of a given use and will so reduce productivity or benefits, or increase required inputs, that this expenditure will be only marginally justified.

Not Suitable/ Not Relevant

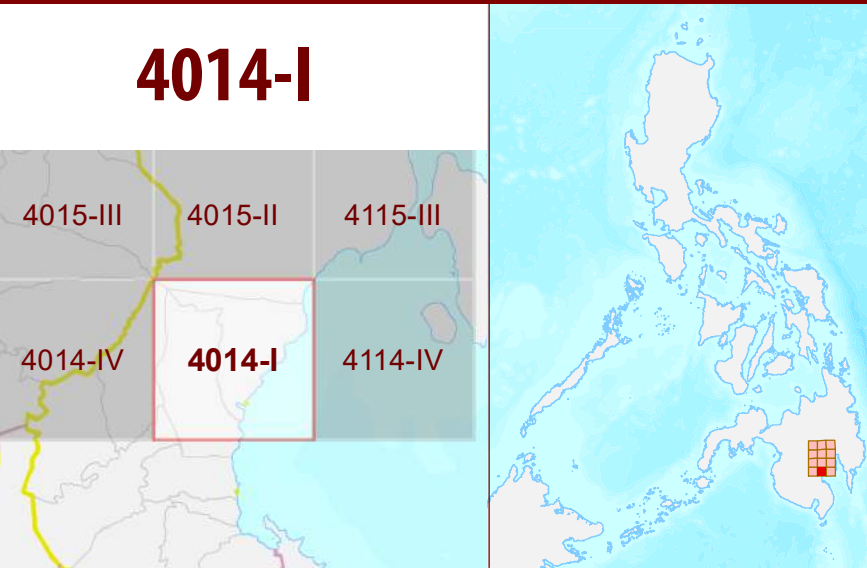
OTHER SIGNS

- NGP Areas
- Cacao
- Land limitation
- Land use

CONVENTIONAL SIGNS

- ROADS**
 - Expressway
 - Trunk line
 - Primary
 - Secondary
 - Tertiary
- BOUNDARY**
 - Region
 - Province
 - District
 - Municipality
 - Barangay
- HYDROLOGY**
 - Sea / Shoreline
 - Lakes / Rivers
- PLACES**
 - Capital City / City
 - Capital Town / Town
- LAND USE**
 - Built-up
 - Fishpond
 - Mangrove

ADJOINING SHEETS



MISCELLANEOUS INFORMATION

SOURCES OF INFORMATION : Topographic information taken from NAMRIA Topographic Map at 1:50,000 scale. Land resources information from the Agricultural Land Management and Evaluation Division (ALMED), Soil Survey Division (SSD) and Laboratory Services Division (LSD) of BSWM. Rice areas obtained from the Land Use System (FAO, 2015) and Philippine Rice Information System (PRISM) (IRRI, 2015). Data analysis and compilation through the **Land Resources Evaluation and Suitability Assessment of Strategic Production Areas for Major Commodities Project** implemented by BSWM (2017).

Project Leader : BERNARDO B. PASCUA
GIS and Cartography : IRVIN K. SAMALCA

Funding Agency : Department of Agriculture - Bureau of Agricultural Research (DA-BAR)
Collaborating Agencies : Philippine Council on Agriculture and Fisheries (PCAF)
: Department of Agriculture and Fisheries - ARMM, Department of Agriculture Regional Field Office of Region IX, X, XI, XII and XIII (Caraga)
: Local Government Unit (LGU) of covered provinces and municipalities

Map produced by the Geomatics and Soil Information Technology Division, Bureau of Soils and Water Management (BSWM).
Users noting errors or omissions in this publication are requested to inform the Bureau of Soils and Water Management.

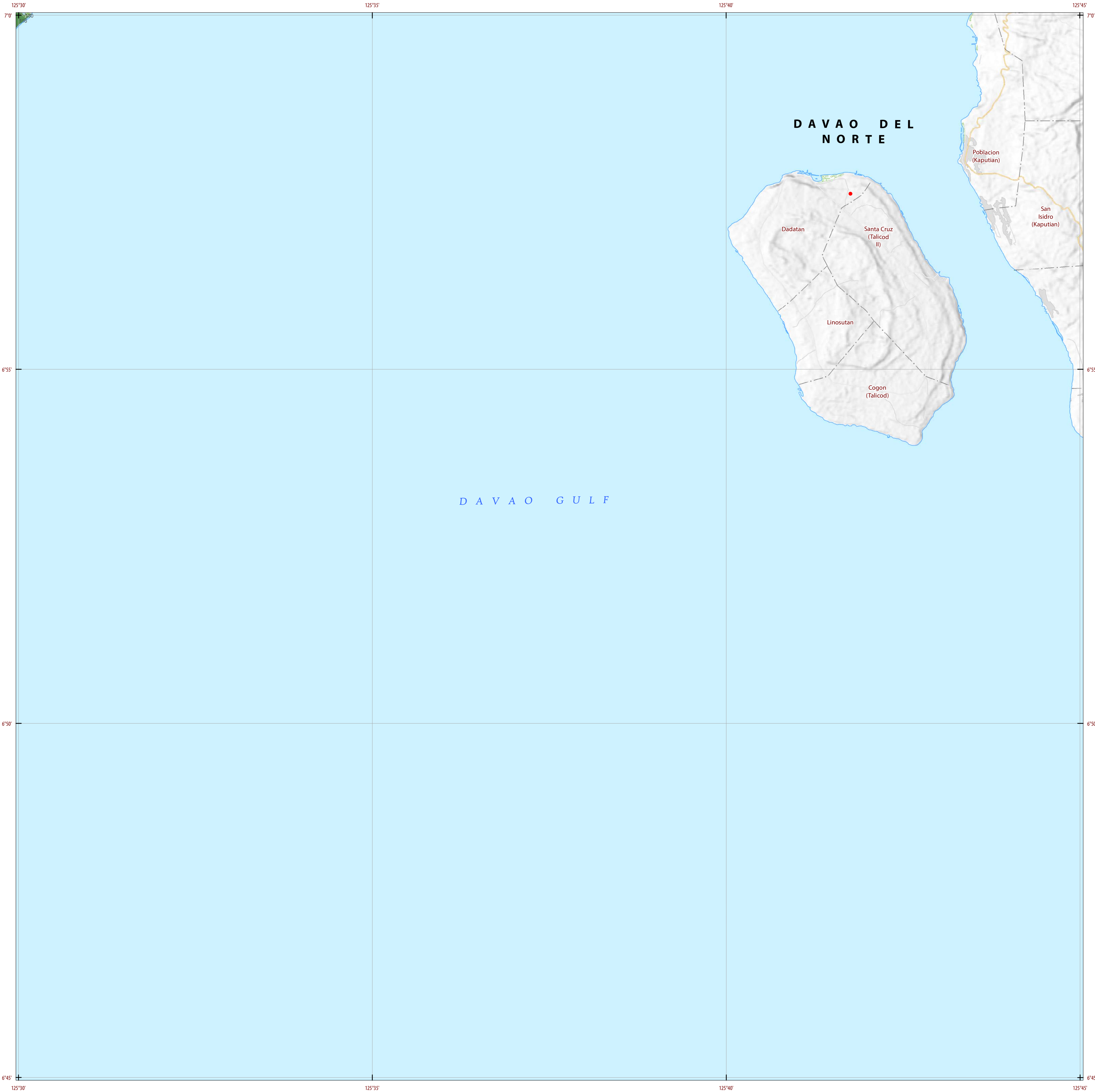
This publication is licensed under a Creative Commons Attribution 4.0 International License. Unless otherwise noted, copyright and any other intellectual property rights, in this publication is owned by the Philippine Government. This publication should be attributed as :
BSWM, 2019. *Land Suitability Map Series for Rubber of DAVAO CITY*
(50,000 Scale) . CC BY NC SA 4.0.

REPUBLIC OF THE PHILIPPINES
DEPARTMENT OF AGRICULTURE
BUREAU OF SOILS AND WATER MANAGEMENT
SRDC Bldg, Elliptical Road Cor. Visayas Avenue, Dilliman, Quezon City 1101
Tel/Fax No. : (+632) 332-9534 E-mail : bswmcenter@da.gov.ph

4114-IV

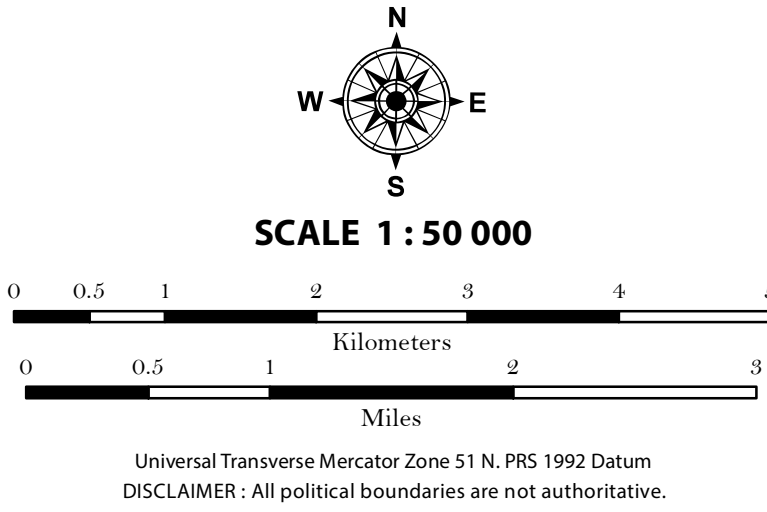
DAVAO CITY

Kaputian



LAND SUITABILITY MAP
RUBBER

LAND RESOURCES EVALUATION AND SUITABILITY
ASSESSMENT OF STRATEGIC PRODUCTION AREAS



LEGEND

SUITABILITY CLASSES

- S1 Highly Suitable** - Land having no significant limitations to sustained application of a given use, or only minor limitations that will not significantly reduce productivity or benefits and will not raise inputs above an acceptable level.
- S2 Moderately Suitable** - Land having limitations which in aggregate are moderately severe for sustained application of a given use; the limitations will reduce productivity or benefits and increase required inputs to the extent that the overall advantage to be gained from the use, although still attractive, will be appreciably inferior to that expected on class S1 land.
- S3 Marginally Suitable** - Land having limitations which in aggregate are severe for sustained application of a given use and will so reduce productivity or benefits, or increase required inputs, that this expenditure will be only marginally justified.

Not Suitable/ Not Relevant

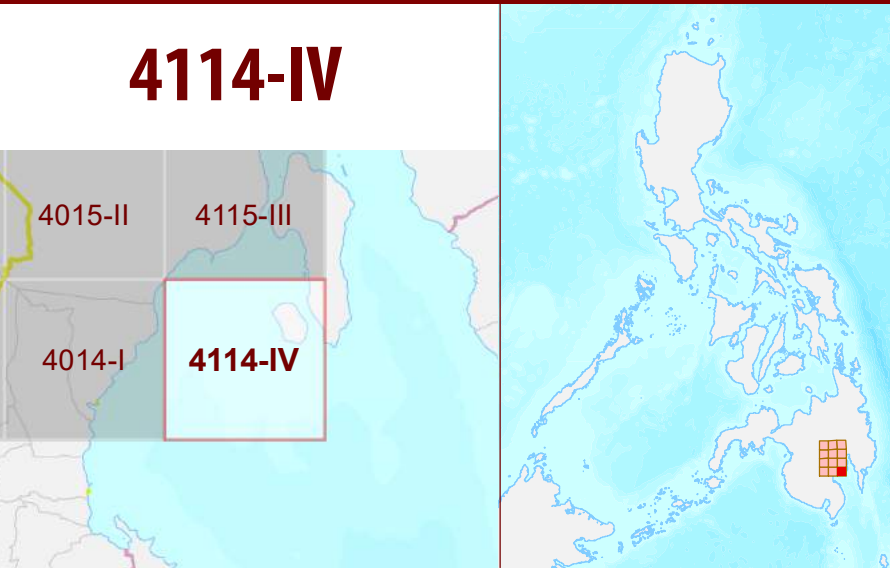
OTHER SIGNS

- NGP Areas
Cacao
Land limitation
Land use

CONVENTIONAL SIGNS

- ROADS**
Expressway
Trunk line
Primary
Secondary
Tertiary
- BOUNDARY**
Region
Province
District
Municipality
Barangay
- HYDROLOGY**
Sea / Shoreline
Lakes / Rivers
- PLACES**
Capital City / City
Capital Town / Town
- LAND USE**
Built-up
Fishpond
Mangrove

ADJOINING SHEETS



MISCELLANEOUS INFORMATION

SOURCES OF INFORMATION : Topographic information taken from NAMRIA Topographic Map at 1:50,000 scale. Land resources information from the Agricultural Land Management and Evaluation Division (ALMED), Soils Survey Division (SSD) and Laboratory Services Division (LSD) of BSWM. Rice areas obtained from the Land Use System (FAO, 2015) and Philippine Rice Information System (PRISM) (IRRI, 2015). Data analysis and compilation through the **Land Resources Evaluation and Suitability Assessment of Strategic Production Areas for Major Commodities Project** implemented by BSWM (2017).

Project Leader : BERNARDO B. PASCUA
GIS and Cartography : IRVIN K. SAMALCA

Funding Agency : Department of Agriculture - Bureau of Agricultural Research (DA-BAR)
Collaborating Agencies : Philippine Council on Agriculture and Fisheries (PCAF)
: Department of Agriculture and Fisheries - ARMM, Department of Agriculture Regional Field Office of Region IX, X, XI, XII and XIII (Caraga)
: Local Government Unit (LGU) of covered provinces and municipalities

Map produced by the Geomatics and Soil Information Technology Division, Bureau of Soils and Water Management (BSWM).
Users noting errors or omissions in this publication are requested to inform the Bureau of Soils and Water Management.

This publication is licensed under a Creative Commons Attribution 4.0 International License. Unless otherwise noted, copyright and any other intellectual property rights, in this publication is owned by the Philippine Government. This publication should be attributed as :
BSWM, 2019. *Land Suitability Map Series for Rubber of DAVAO CITY*
(50,000 Scale) . CC BY NC SA 4.0.

REPUBLIC OF THE PHILIPPINES
DEPARTMENT OF AGRICULTURE
BUREAU OF SOILS AND WATER MANAGEMENT
SRDC Bldg., Elliptical Road Cor. Visayas Avenue, Diliman, Quezon City 1101
Tel/Fax No.: (+632) 332-9534 E-mail: bswmclientcenter@da.gov.ph