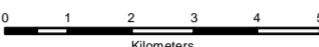

REPUBLIC OF THE PHILIPPINES
DEPARTMENT OF AGRICULTURE
BUREAU OF SOILS AND WATER MANAGEMENT
 Elliptical Road Cor. Visayas Ave., Diliman, Quezon City

NUTRIENT STATUS MAP: PHOSPHOROUS
 (Key Rice Areas)
DAVAO CITY

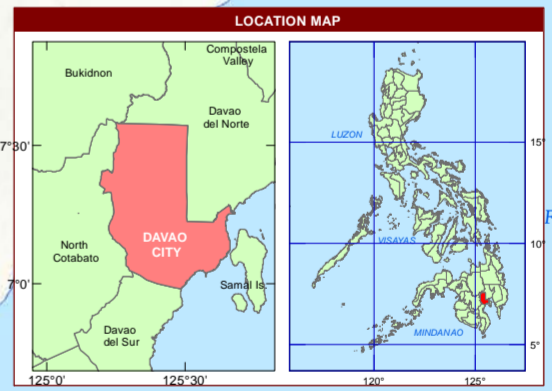
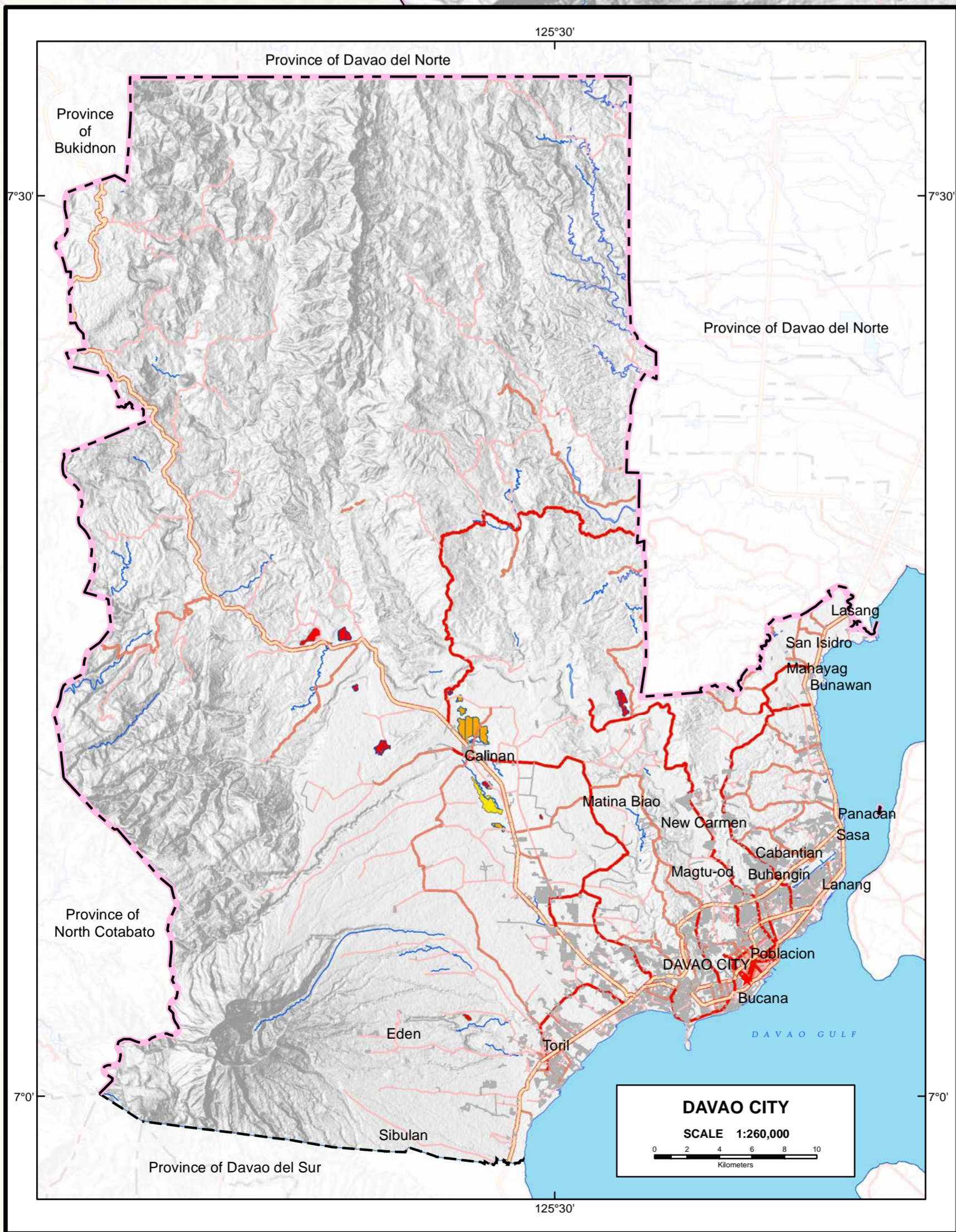
SCALE 1:120,000


Projection : Transverse Mercator
 Datum : PRS 1992
 DISCLAIMER : All political boundaries are not authoritative

MAPPING UNIT	DESCRIPTION	AVAILABLE PHOSPHOROUS (P) (ppm)		AREA	
		Bray 1	OLSEN	ha	%
	Low	0 - 2	0 - 6	188	29.10
				81	12.54
	Moderately Low	2.1 - 6.0	6.1 - 10	270	41.80
				-	-
	Moderately High	6.1 - 10	10.1 - 15	107	16.56
				-	-
	High	10.1 - 15	15.1 - 20	-	-
				-	-
TOTAL				646	100.00

Paddy Irrigated Paddy Non-Irrigated

Area estimated based on actual field survey, other information from DA-RFOs, MAs, NIA Service Area, NAMRIA Land Cover (2010) and BSWM Land Use System Map.



CONVENTIONAL SIGNS		
ROADS	BOUNDARY	HYDROLOGY
Expressway	Regional	Rivers / Lake
Trunk line	Provincial	Shoreline
Primary	Municipal	PLACES
Secondary		Capital City / City
Tertiary		Capital Town / Town

MISCELLANEOUS INFORMATION
SOURCES OF INFORMATION: Topographic information taken from NAMRIA Topographic Map at a scale of 1:50,000. Elevation data taken from SRTM 1 arc-second global dataset (2015). Bathymetry information taken from British Oceanographic Centre Fertility data gathered through the Soil Health Assessment-National Soil Sampling and Testing Project Phase II led by the Bureau of Soils and Water Management in partnership with the DA-Regional Field Offices (RFOs) and Local Government Units (LGUs).

Users noting errors or omissions in this publication are requested to inform the BSWM, SRDC Bldg., Elliptical Rd., cor. Visayas Avenue, Diliman, Quezon City, Philippines or visit the BSWM website (<http://www.bswm.da.gov.ph>).

Copyright © 2017. All rights reserved to the Bureau of Soils and Water Management. No part of this publication may be reproduced, stored in a retrieval system or published without written consent from the BSWM.

Prepared and produced by the GEOMATICS AND SOIL INFORMATION TECHNOLOGY DIVISION, BSWM.