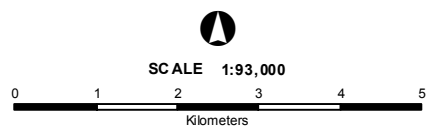


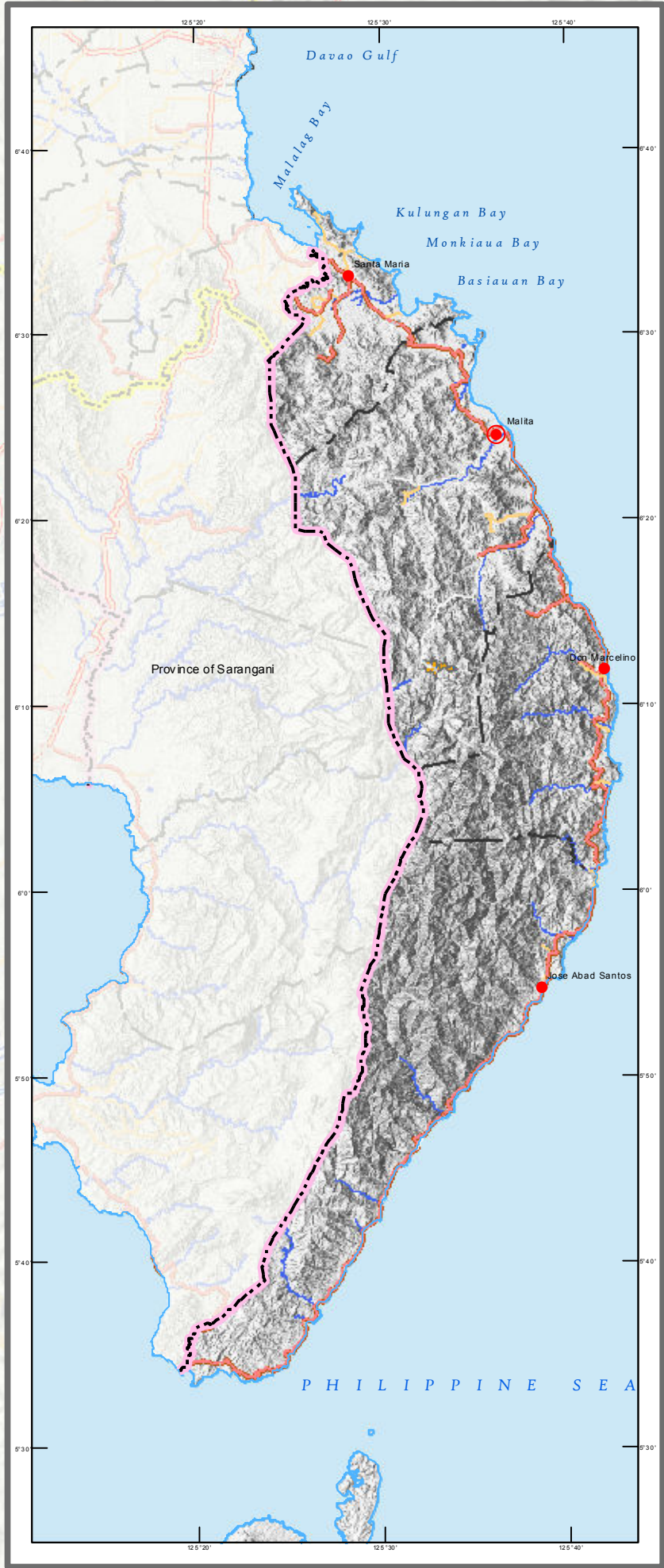


REPUBLIC OF THE PHILIPPINES
DEPARTMENT OF AGRICULTURE
**BUREAU OF SOILS AND
WATER MANAGEMENT**
Elliptical Road Cor. Visayas Ave., Diliman, Quezon City

RICE SUITABILITY MAP
(Key Rice Areas)
PROVINCE OF DAVAO OCCIDENTAL



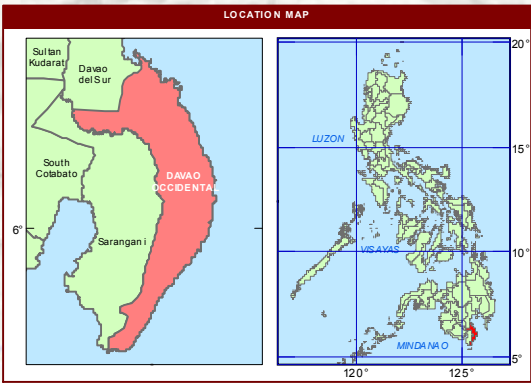
Projection : Transverse Mercator
Datum : PRS 1992
DISCLAIMER : All political boundaries are not authoritative



LEGEND						
SUITABILITY RATING	DESCRIPTION	LIMITING FACTORS			AREA	
		Moderate	Marginal	Severe	ha	%
S2dx1	Moderately Suitable	d,x,f	-	-	9	3.26
S2rdx1		r,d,x,f	-	-	254	96.74
TOTAL ...				263	100.00	

LIMITING FACTORS	RATING ARRANGED IN INCREASING SEVERITY OF LIMITATION			
	Highly Suitable (S1)	Moderately Suitable (S2)	Marginally Suitable (S3)	Not Suitable (N)
Water Availability m - number of dry months (<75mm) r - annual average rainfall (mm)	0 - 3 > 1500	4 - 6 1200 - 1500	7 - 9 800 - 1200	>9 < 800
Temperature Regime t - annual average temperature (°C)	25 - 29	30 - 32 22 - 24	33 - 35 18 - 21	> 35 < 18
Terrain s - slope (%) o - stoniness e - erosion i - flooding	0 - 3 none none - slight none - slight	3 - 8 slight slight - moderate slight - moderate	8 - 18 moderate moderate - severe severe	>18 severe
Rooting Conditions d - soil drainage class	VPD - SPD C, SC, SIC, CL, SCL, SICL	SPD - MWD	WD	SED - ED
x - soil texture		L, SL, S	SL, LS	S
h - soil depth (cm)	> 50	41 - 50	20 - 40	< 20
Nutrient Availability f - soil fertility	Moderately High to High (MH - H)	Moderately Low (ML)	Low (L)	-

Note:
Highly Suitable (S1) - with none to slight limitations for any given use. Slight limitations will not significantly reduce productivity or benefit nor raise inputs above an acceptable level.
Moderately Suitable (S2) - with limitations which are moderately severe for sustained application for a given use. Limitations will moderately reduce productivity or benefits. Requires increased input to the extent that the overall advantage to be gained will be inferior to that expected on S1 land.
Marginally suitable (S3) - with limitations which in aggregate are severe for sustained application of a given use and will significantly reduce productivity or benefits. Limitations will significantly increase required inputs, that this expenditure will only be marginally satisfied.
Not Suitable (N) - with severe limitations which are difficult to overcome in time or cannot be corrected at currently acceptable cost. Limitations are so severe that prevent successful sustained use of the land in the given manner.



CONVENTIONAL SIGNS		
ROADS	BOUNDARY	HYDROLOGY
Expressway	Regional	Rivers / Lake
Trunk line	Provincial	Shore line
Primary	Municipal	
Secondary		
Tertiary		
		PLACES
		Capital City / City
		Capital Town / Town

MISCELLANEOUS INFORMATION
SOURCES OF INFORMATION: Topographic information taken from NAMRIA Topographic Map at a scale of 1:50,000. Elevation data taken from SRTM 1 arc-second global dataset (2015). Bathymetry information taken from British Oceanographic Centre Fertility data gathered through the Soil Health Assessment-National Soil Sampling and Testing Project Phase II led by the Bureau of Soils and Water Management in partnership with the DA-Regional Field Offices (RFOs) and Local Government Units (LGUs).
Users noting errors or omissions in this publication are requested to inform the BSWM, SRDC Bldg., Elliptical Rd., cor. Visayas Avenue, Diliman, Quezon City, Philippines or visit the BSWM website (<http://www.bswm.dagov.ph>).
Copyright © 2017. All rights reserved to the Bureau of Soils and Water Management. No part of this publication may be reproduced, stored in a retrieval system or published without written consent from the BSWM.
Prepared and produced by the GEOMATICS AND SOIL INFORMATION TECHNOLOGY DIVISION, BSWM.