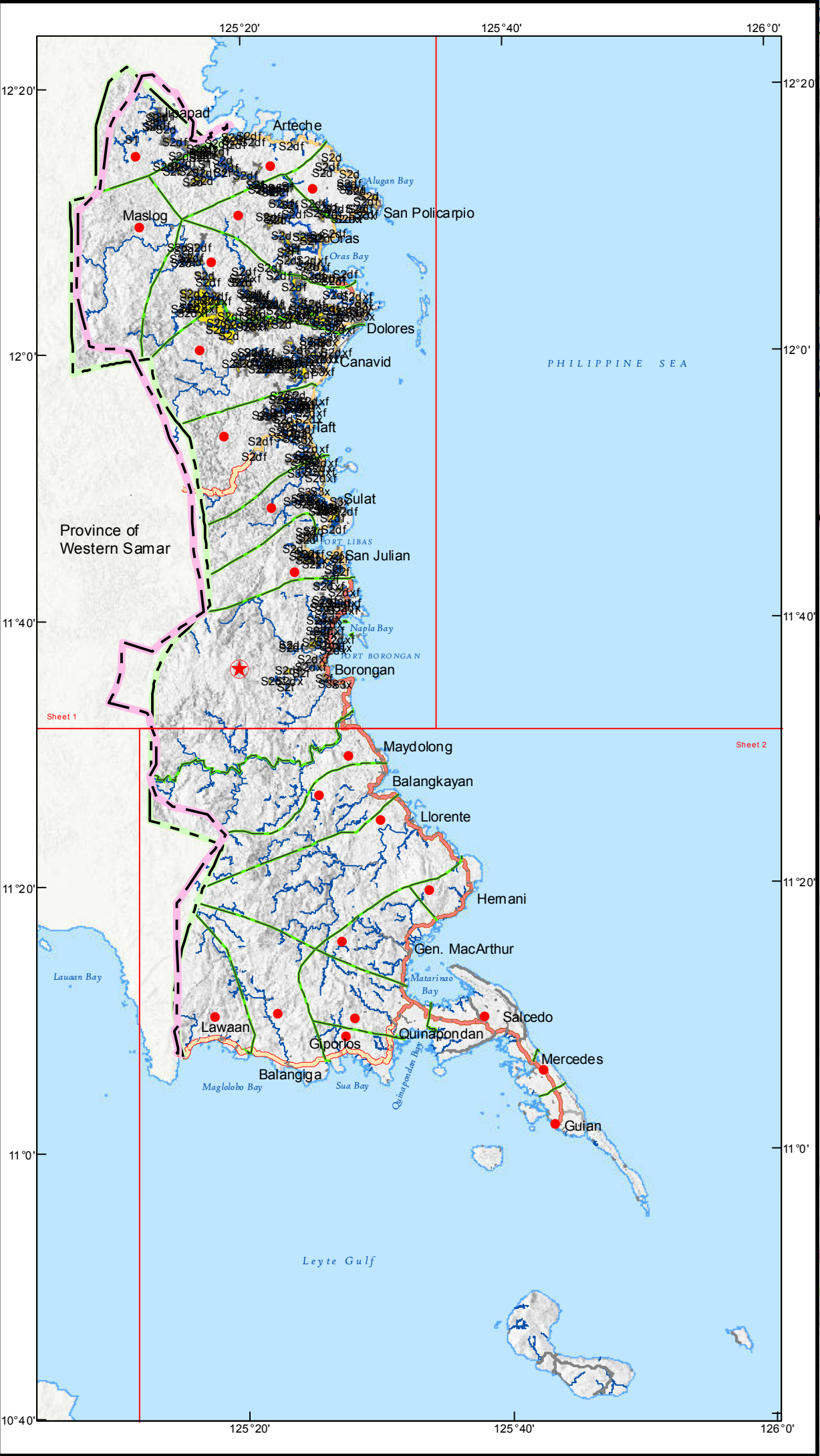


LEGEND						
SUITABILITY RATING	DESCRIPTION	LIMITING FACTORS			AREA	
		Moderate	Marginal	Severe	ha	%
S1	Highly Suitable	-	-	-	329	1.89
S2f	Moderately Suitable	f	-	-	1,777	10.22
S2x		x	-	-	19	0.11
S2xf		x, f	-	-	94	0.54
S2d		d	-	-	2,624	15.10
S2df		d, f	-	-	7,964	45.83
S2dx		d, x	-	-	513	2.95
S2dxf		d, x, f	-	-	2,735	15.74
S3f	Marginally Suitable	-	f	-	22	0.13
S3f		d	f	-	53	0.30
S3x		d	x	-	1,232	7.09
S3xf		d	x, f	-	18	0.10
TOTAL					17,380	100.00


LIMITING FACTORS	RATING ARRANGED IN INCREASING SEVERITY OF LIMITATION			
	Highly Suitable (S1)	Moderately Suitable (S2)	Marginally Suitable (S3)	Not Suitable (N)
Water Availability m - number of dry months (<75mm) r - annual average rainfall (mm)	0 - 3 > 1500	4 - 6 1200 - 1500	7 - 9 800 - 1200	>9 < 800
Temperature Regime t - annual average temperature (°C)	25 - 29	30 - 32 22 - 24	33 - 35 18 - 21	>35 <18
Terrain s - slope (%) o - stoniness e - erosion i - flooding	0 - 3 none none - slight none - slight	3 - 8 slight slight - moderate slight - moderate	8 - 18 moderate moderate severe	>18 severe severe -
Rooting Conditions d - soil drainage class	VPD - SPD C, SC, SIC, CL, SCL SiCL	SPD - MWD	WD	SED - ED
x - soil texture		L, SiL, Si	SL, LS	S
h - soil depth (cm)	> 50	41 - 50	20 - 40	< 20
Nutrient Availability f - soil fertility	Moderately High to High (MH-H)	Moderately Low (ML)	Low (L)	-

Note:
Highly Suitable (S1) - with none to slight limitations for a given use. Slight limitations will not significantly reduce productivity or benefit nor raise inputs above an acceptable level.
Moderately Suitable (S2) - with limitations which are moderately severe for sustained application for a given use. Limitations will moderately reduce productivity or benefits. Requires increased input to the extent that the overall advantage to be gained will be inferior to that expected on S1 land.
Marginally suitable (S3) - with limitations which in aggregate are severe for sustained application of a given use and will significantly reduce productivity or benefits. Limitations will significantly increase required inputs, that this expenditure will only be marginally satisfied.
Not Suitable (N) - with severe limitations which are difficult to overcome in time or cannot be corrected at currently acceptable cost. Limitations are so severe that prevent successful sustained use of the land in the given manner.

Province of Western Samar



CONVENTIONAL SIGNS		
ROADS	BOUNDARY	HYDROLOGY
Trunk	2016 Namria Prov'l. Bdry.	Rivers / Lake
Primary	Old NAMRIA Prov'l. Bdry.	
Secondary	Old NAMRIA Mun'l. Bdry.	PLACES
Tertiary		Capital City
Residential		Town
		Shoreline



REPUBLIC OF THE PHILIPPINES
DEPARTMENT OF AGRICULTURE
BUREAU OF SOILS AND WATER MANAGEMENT
Elliptical Road Cor. Visayas Ave., Diliman, Quezon City

RICE SUITABILITY MAP
(Key Rice Areas)
PROVINCE OF EASTERN SAMAR

SCALE 1:170,000

Projection : Transverse Mercator
Datum : PRS 1992
DISCLAIMER : All political boundaries are not authoritative

