



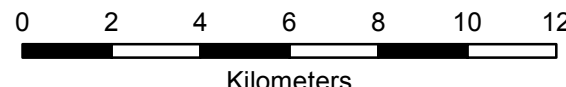
REPUBLIC OF THE PHILIPPINES
DEPARTMENT OF AGRICULTURE
**BUREAU OF SOILS AND
WATER MANAGEMENT**
Elliptical Road Cor. Visayas Ave., Diliman, Quezon City

**NUTRIENT STATUS MAP : CALCIUM
(Key Rice Areas)**

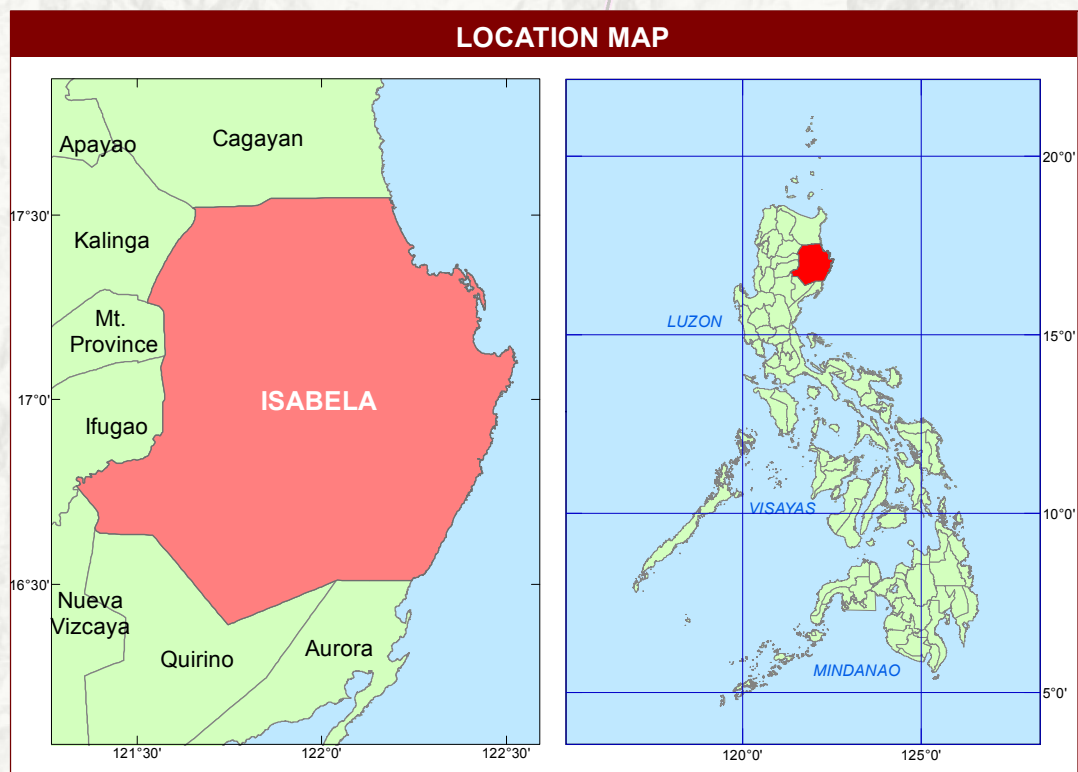
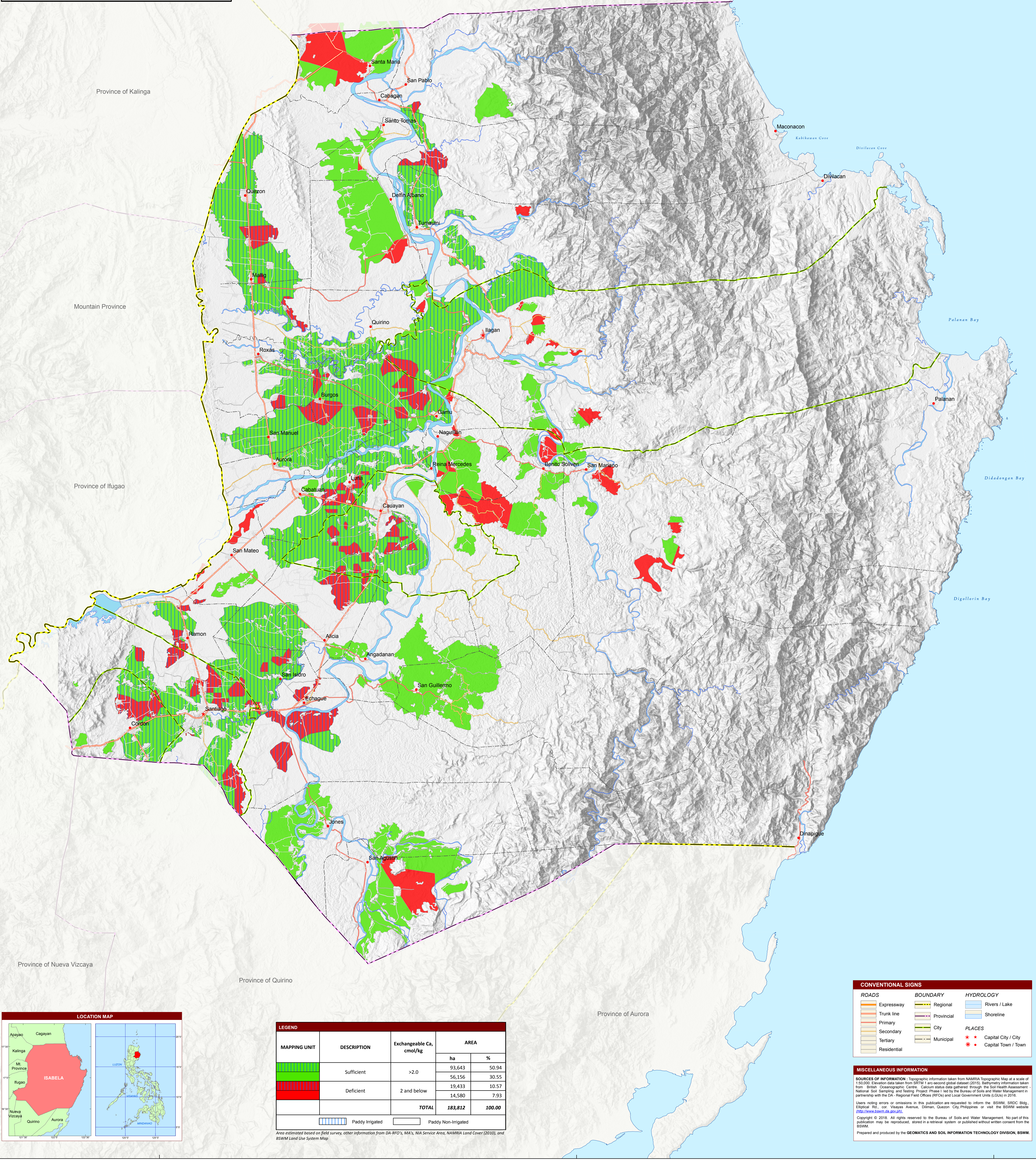
PROVINCE OF ISABELA



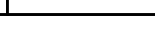
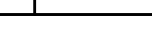


SCALE 1:170,000



Projection : Transverse Mercator
Datum : PHS 1992
DISCLAIMER : All political boundaries are not authoritative



LEGEND				
MAPPING UNIT	DESCRIPTION	Exchangeable Ca, cmol/kg	AREA	
			ha	%
	Sufficient	>2.0	93,643	50.94
			56,156	30.55
	Deficient	2 and below	19,433	10.57
			14,580	7.93
		TOTAL	183,812	100.00
<div> Paddy Irrigated</div> <div> Paddy Non-Irrigated</div>				

Area estimated based on field survey, other information from DA-RFO's, MA's, NA Service Area, NAMRIA Land Cover (2010), and BSWM Land Use System Map.

CONVENTIONAL SIGNS		
ROADS	BOUNDARY	HYDROLOGY
Expressway	Regional	Rivers / Lake
Trunk line	Provincial	Shoreline
Primary	City	PLACES
Secondary	Municipal	Capital City / City
Tertiary		Capital Town / Town
Residential		

MISCELLANEOUS INFORMATION

SOURCES OF INFORMATION : Topographic information taken from NAMRIA Topographic Map at a scale of 1:50,000. Elevation data taken from SRTM 1 arc-second global dataset (2015). Bathymetry information taken from British Oceanographic Centre. Calcium status data gathered through the Soil Health Assessment - National Soil Sampling and Testing Project Phase I led by the Bureau of Soils and Water Management in partnership with the DA -Regional Field Offices (RFOs) and Local Government Units (LGUs) in 2016.

Users noting errors or omissions in this publication are requested to inform the BSWM, SRDC Bldg., Elliptical Rd., cor. Visayas Avenue, Diliman, Quezon City, Philippines or visit the BSWM website: <http://www.bswm.da.gov.ph>.

Copyright © 2018. All rights reserved to the Bureau of Soils and Water Management. No part of this publication may be reproduced, stored in a retrieval system or published without written consent from the BSWM.

Prepared and produced by the **GEOMATICS AND SOIL INFORMATION TECHNOLOGY DIVISION, BSWM.**