


REPUBLIC OF THE PHILIPPINES
DEPARTMENT OF AGRICULTURE
**BUREAU OF SOILS AND
WATER MANAGEMENT**
Elliptical Road, cor. Visayas Ave., Diliman, Quezon City

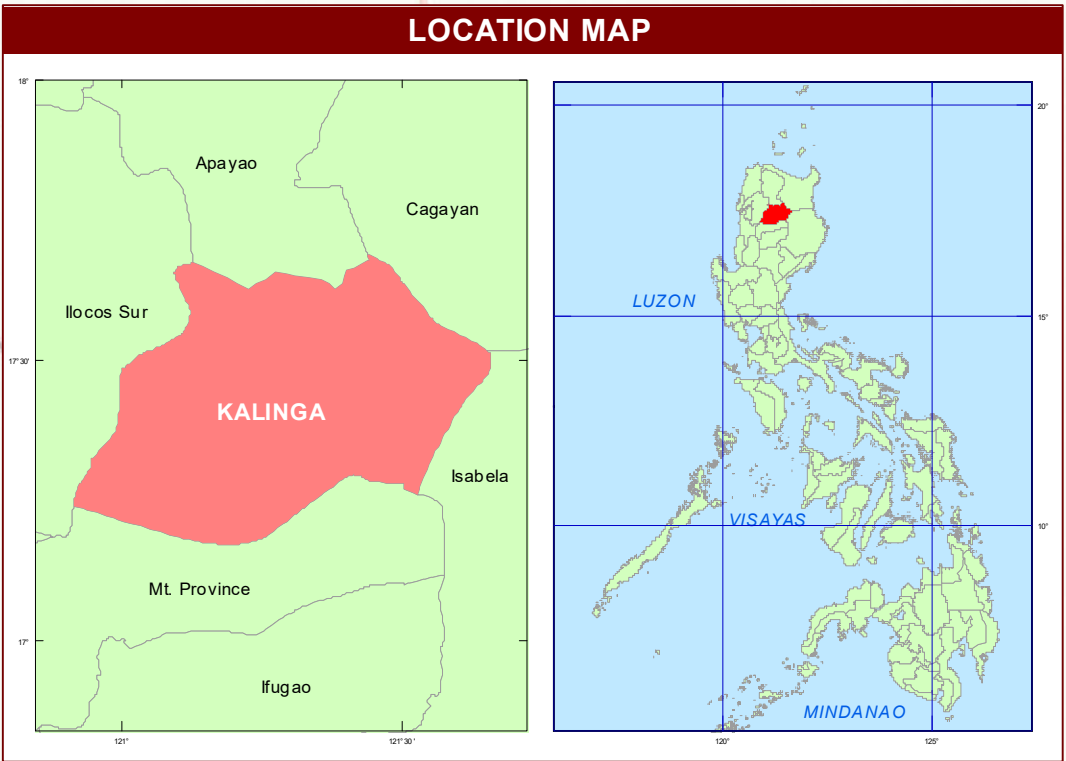
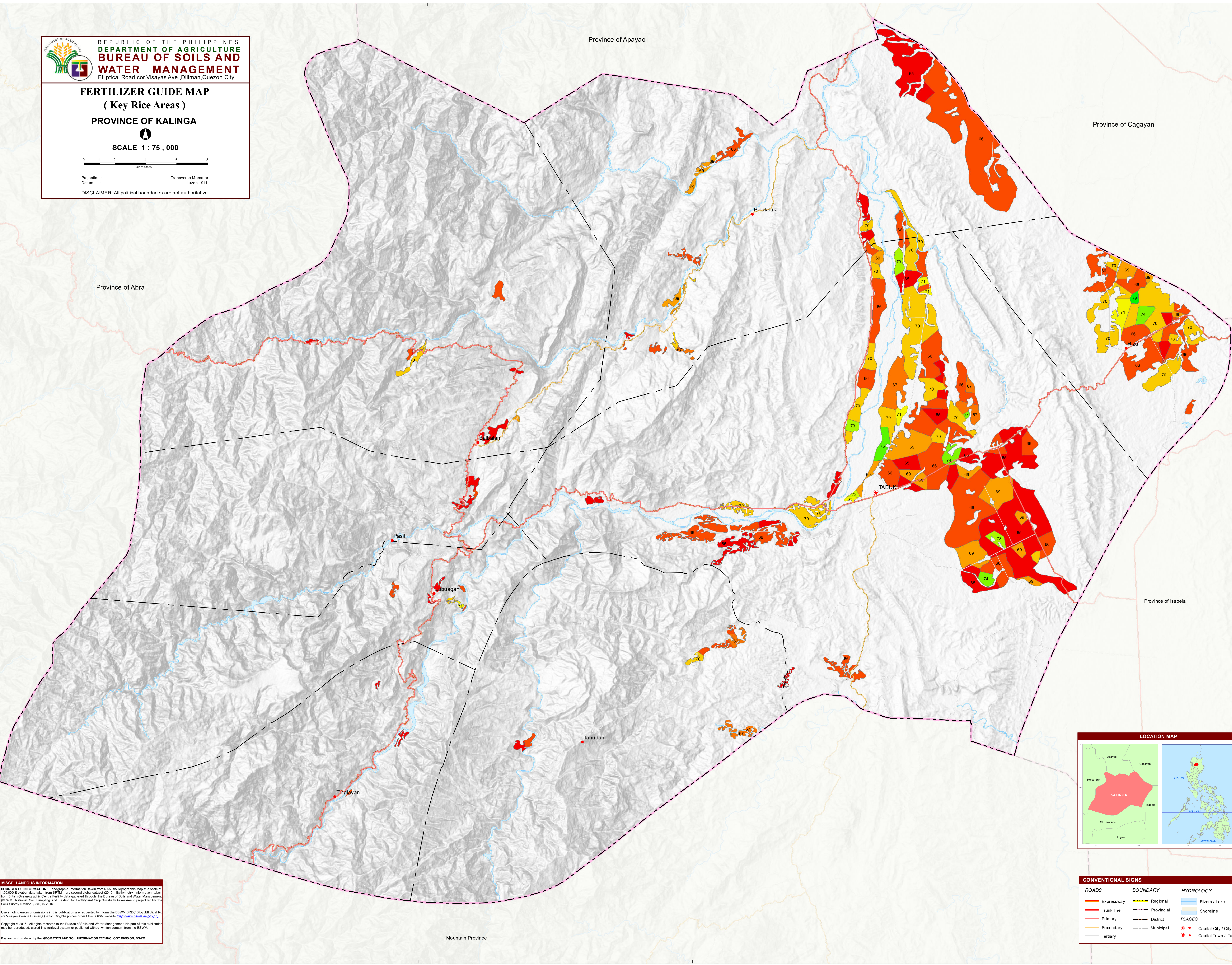
FERTILIZER GUIDE MAP
(Key Rice Areas)
PROVINCE OF KALINGA

SCALE 1 : 75 , 000

01234568

Kilometers

Projection :
Datum :
Transverse Mercator
Luzon 1911

DISCLAIMER: All political boundaries are not authoritative



CONVENTIONAL SIGNS

ROADS

Expressway
Trunk line
Primary
Secondary
Tertiary

BOUNDARY

Regional
Provincial
District
Municipal

HYDROLOGY

Rivers / Lake
Shoreline

PLACES

Capital City / City
Capital Town / Town

MISCELLANEOUS INFORMATION

SOURCES OF INFORMATION: Topographic information taken from NAMRIA Topographic Map at a scale of 1:50,000. Elevation data taken from SRTM 1 arc-second global dataset (2015). Bathymetry information taken from British Oceanographic Centre's bathymetry data gathered through the Bureau of Soils and Water Management (BSWM) National Soil Sampling and Testing for Fertility and Crop Suitability Assessment project led by the Soils Survey Division (SSD) in 2016.

Please notify errors or omissions in this publication to inform the BSWM-SDC Enag, Elliptical Rd, cor. Visayas Avenue, Diliman, Quezon City, Philippines or visit the BSWM website: <http://www.bswm.da.gov.ph/>

Copyright © 2016. All rights reserved to the Bureau of Soils and Water Management. No part of this publication may be reproduced, stored in a retrieval system or published without written consent from the BSWM.

Prepared and produced by the **GEOMATICS AND SOIL INFORMATION TECHNOLOGY DIVISION, BSWM.**

DESCRIPTION				
TEXTURE		N	P	K
L	— Light	L	-	Moderately Low
		ML	-	Moderately Low
M	— Medium to Heavy	MH	-	Moderately High
		H	-	High