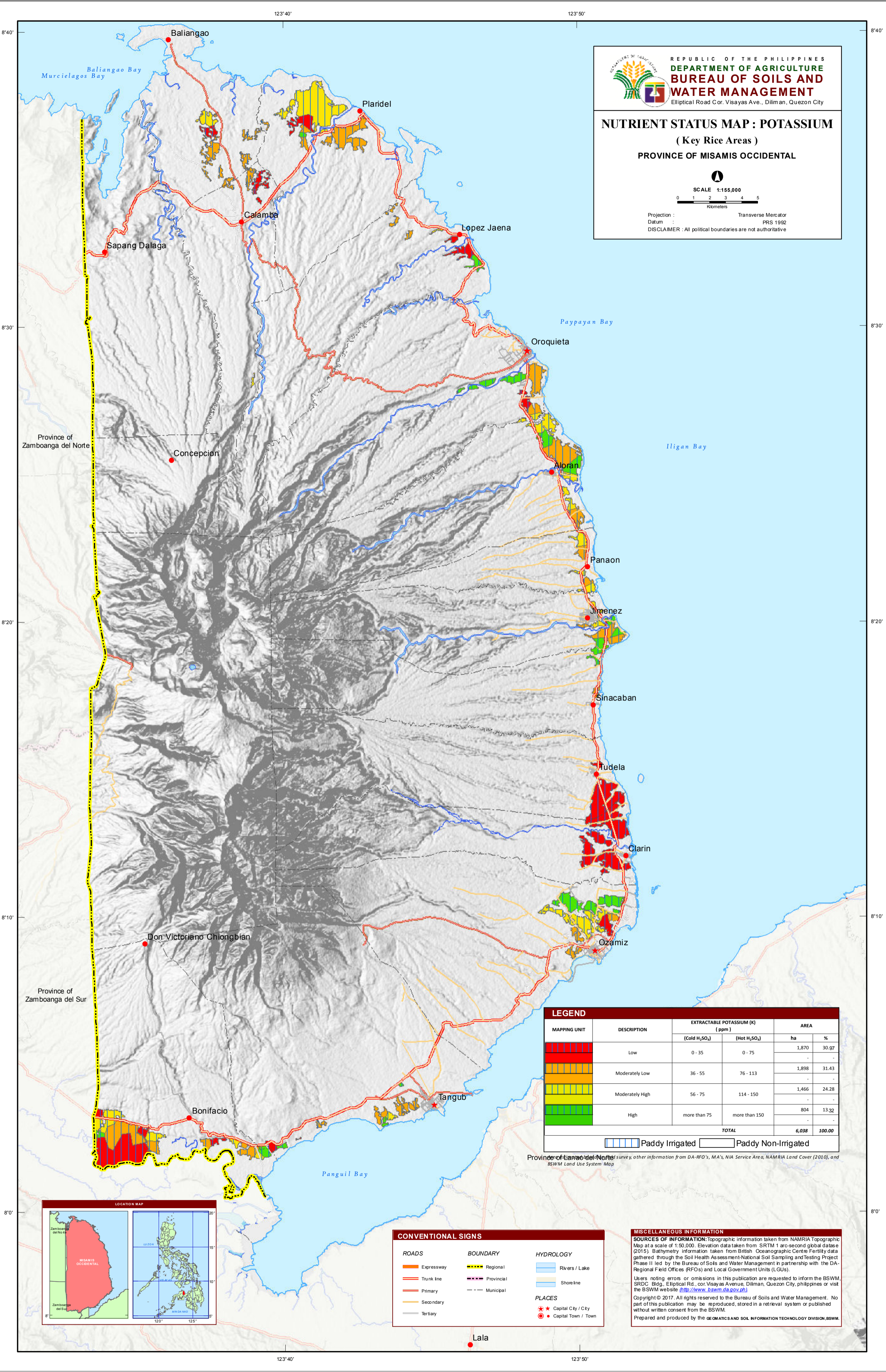

**REPUBLIC OF THE PHILIPPINES**  
**DEPARTMENT OF AGRICULTURE**  
**BUREAU OF SOILS AND WATER MANAGEMENT**  
 Elliptical Road Cor. Visayas Ave., Diliman, Quezon City

**NUTRIENT STATUS MAP : POTASSIUM**  
 ( Key Rice Areas )  
**PROVINCE OF MISAMIS OCCIDENTAL**


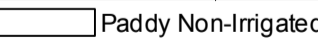
SCALE 1:155,000  
 0 1 2 3 4 5  
 Kilometers

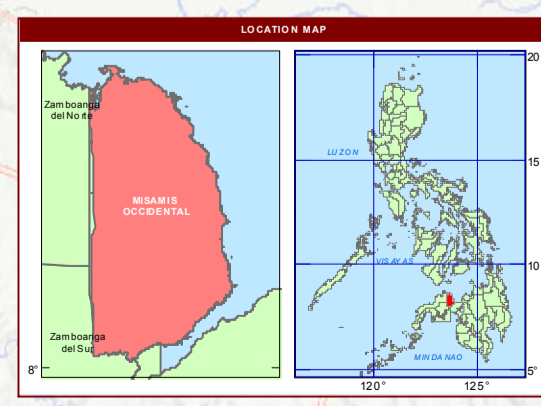
Projection : Transverse Mercator  
 Datum : PRS 1992  
 DISCLAIMER : All political boundaries are not authoritative



**LEGEND**

MAPPING UNIT	DESCRIPTION	EXTRACTABLE POTASSIUM (K) (ppm)		AREA	
		(Cold H <sub>2</sub> SO <sub>4</sub> )	(Hot H <sub>2</sub> SO <sub>4</sub> )	ha	%
[Red]	Low	0 - 35	0 - 75	1,870	30.97
[Orange]	Moderately Low	36 - 55	76 - 113	1,898	31.43
[Yellow]	Moderately High	56 - 75	114 - 150	1,466	24.28
[Green]	High	more than 75	more than 150	804	13.32
<b>TOTAL</b>				<b>6,038</b>	<b>100.00</b>

 Paddy Irrigated   
  Paddy Non-Irrigated



**CONVENTIONAL SIGNS**

Expressway	Regional	Rivers / Lake
Trunk line	Provincial	Shore line
Primary	Municipal	
Secondary		
Tertiary		

**PLACES**  
 Capital City / City  
 Capital Town / Town

**MISCELLANEOUS INFORMATION**

**SOURCES OF INFORMATION:** Topographic information taken from NAMRIA Topographic Map at a scale of 1:50,000. Elevation data taken from SRTM 1 arc-second global dataset (2015). Bathymetry information taken from British Oceanographic Centre Ferry data gathered through the Soil Health Assessment-National Soil Sampling and Testing Project Phase II led by the Bureau of Soils and Water Management in partnership with the DA-Regional Field Offices (RFOs) and Local Government Units (LGUs).

Users noting errors or omissions in this publication are requested to inform the BSWM, SRDC Bldg., Elliptical Rd., cor. Visayas Avenue, Diliman, Quezon City, Philippines or visit the BSWM website (<http://www.bswm.dag.gov.ph>).

Copyright © 2017. All rights reserved to the Bureau of Soils and Water Management. No part of this publication may be reproduced, stored in a retrieval system or published without written consent from the BSWM.

Prepared and produced by the **GEOMATICS AND SOIL INFORMATION TECHNOLOGY DIVISION, BSWM.**