



REPUBLIC OF THE PHILIPPINES
DEPARTMENT OF AGRICULTURE
**BUREAU OF SOILS AND
WATER MANAGEMENT**
Elliptical Road Cor. Visayas Ave., Diliman, Quezon City

FERTILIZER GUIDE MAP

(Key Rice Areas)

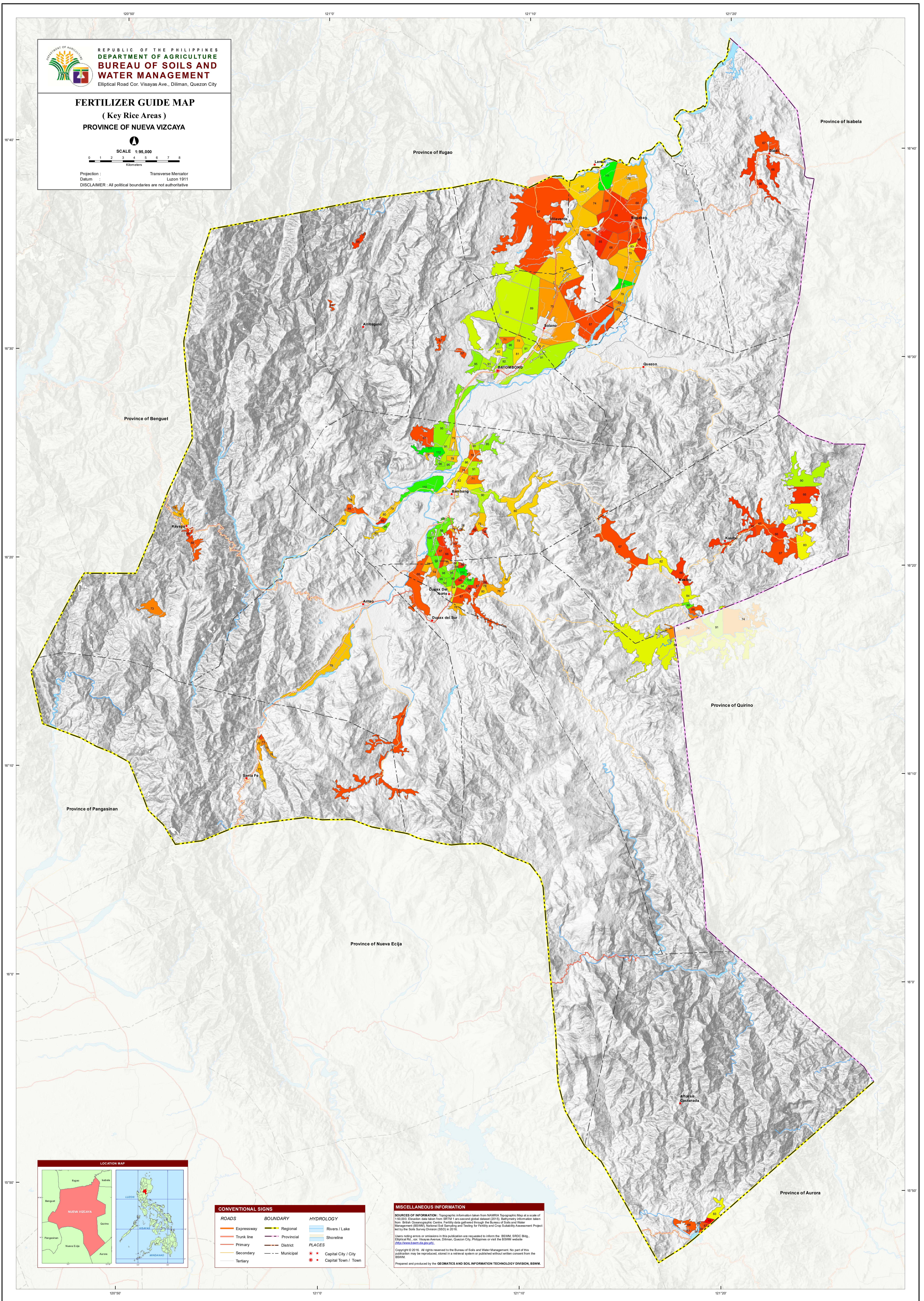
PROVINCE OF NUEVA VIZCAYA



SCALE 1:95,000

0 1 2 3 4 5 6 7 8
Kilometers

Projection : Transverse Mercator
Datum : Luzon 1911
DISCLAIMER : All political boundaries are not authoritative



LOCATION MAP



CONVENTIONAL SIGNS

| ROADS | BOUNDARY | HYDROLOGY |
|------------|------------|---------------------|
| Expressway | Regional | Rivers / Lake |
| Trunk line | Provincial | Shoreline |
| Primary | District | |
| Secondary | Municipal | PLACES |
| Tertiary | | Capital City / City |
| | | Capital Town / Town |

MISCELLANEOUS INFORMATION

SOURCES OF INFORMATION : Topographic information taken from NAMRIA Topographic Map at a scale of 1:50,000. Elevation data taken from SRTM 1 arc-second global dataset (2015). Bathymetry information taken from British Oceanographic Centre. Fertility data gathered through the Bureau of Soils and Water Management (BSWM) National Soil Sampling and Testing for Fertility and Crop Suitability Assessment Project led by the Soil Survey Division (SSD) in 2016.

Users noting errors or omissions in this publication are requested to inform the BSWM, SRDC Bldg., Elliptical Rd. cor. Visayas Avenue, Diliman, Quezon City, Philippines or visit the BSWM website <http://www.bswm.da.gov.ph>.

Copyright © 2016. All rights reserved to the Bureau of Soils and Water Management. No part of this publication may be reproduced, stored in a retrieval system or published without written consent from the BSWM.

Prepared and produced by the GEOMATICS AND SOIL INFORMATION TECHNOLOGY DIVISION, BSWM.

| Fertilizer Recommendation Guide for Rice | | | |
|--|---|------------|-------------------|
| 1st Application | - After last harrowing - Basal | (14-14-14) | Complete |
| 2nd Application | - 10 - 14 DAT (days after transplanting) - Topdress | (46-0-0) | Urea |
| 3rd Application | - 20 - 25 DAT (days after transplanting) - Topdress | (16-20-0) | Ammonias |
| | | (0-18-0) | Solaphos |
| | | (0-0-60) | Muriate of Potash |