



REPUBLIC OF THE PHILIPPINES
 DEPARTMENT OF AGRICULTURE
BUREAU OF SOILS AND WATER MANAGEMENT
 Elliptical Road Cor. Visayas Ave., Diliman, Quezon City

NUTRIENT STATUS MAP: NITROGEN
 (Key Rice Areas)
 PROVINCE OF NUEVA VIZCAYA

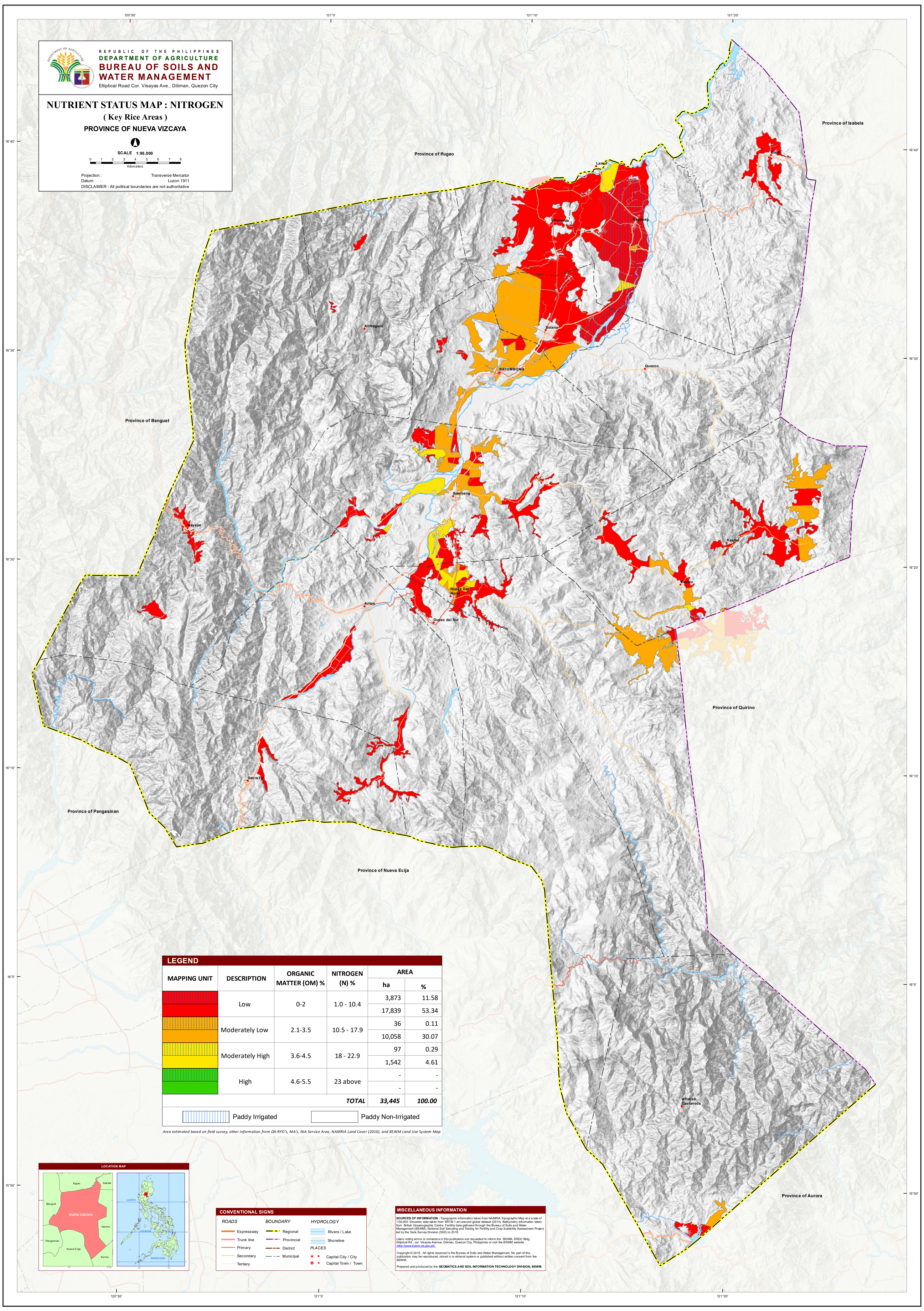


SCALE 1:95,000

0 1 2 3 4 5 6 7 8
 Kilometers

Projection : Transverse Mercator
 Datum : Luzon 1911

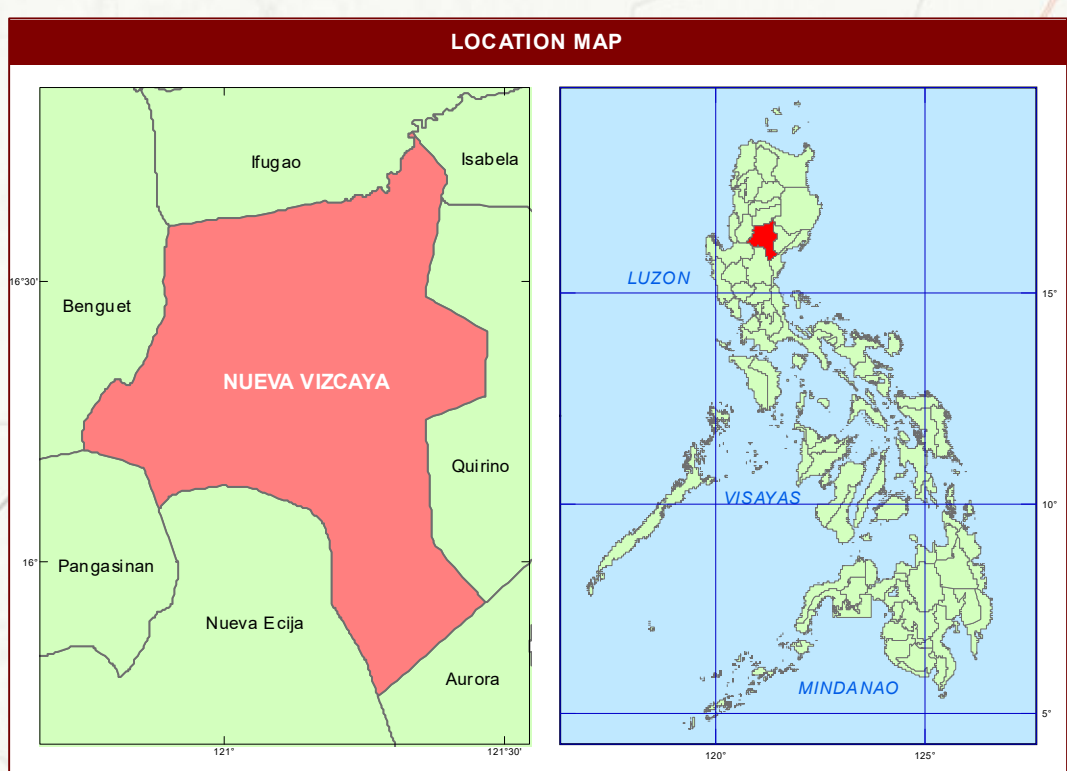
DISCLAIMER : All political boundaries are not authoritative



MAPPING UNIT	DESCRIPTION	ORGANIC MATTER (OM) %	NITROGEN (N) %	AREA	
				ha	%
Low		0-2	1.0 - 10.4	3,873	11.58
				17,839	53.34
Moderately Low		2.1-3.5	10.5 - 17.9	36	0.11
				10,058	30.07
Moderately High		3.6-4.5	18 - 22.9	97	0.29
				1,542	4.61
High		4.6-5.5	23 above	-	-
TOTAL				33,445	100.00

Paddy Irrigated
 Paddy Non-Irrigated

Area estimated based on field survey, other information from DA-RFO's, MA's, NIA Service Area, NAMRIA Land Cover (2010), and BSWM Land Use System Map



CONVENTIONAL SIGNS		

MISCELLANEOUS INFORMATION

SOURCES OF INFORMATION - Topographic information taken from NAMRIA Topographic Map at a scale of 1:50,000. Elevation data taken from SRTM 1 arc-second global dataset (2015). Bathymetry information taken from the Hydrographic Center. Fertility data gathered through the Bureau of Soils and Water Management (BSWM) National Soil Sampling and Testing for Fertility and Crop Suitability Assessment Project and the Soil Survey Division (SSD) in 2016.

Users noting errors or omissions in this publication are requested to inform the BSWM, SRDC Bldg., Elliptical Rd. Cor. Visayas Avenue, Diliman, Quezon City, Philippines or visit the BSWM website <http://www.bswm.da.gov.ph>.

Copyright © 2016. All rights reserved to the Bureau of Soils and Water Management. No part of this publication may be reproduced, stored in a retrieval system or published without written consent from the BSWM.

Prepared and produced by the GEOMATICS AND SOIL INFORMATION TECHNOLOGY DIVISION, BSWM.