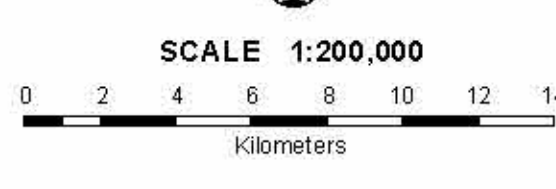
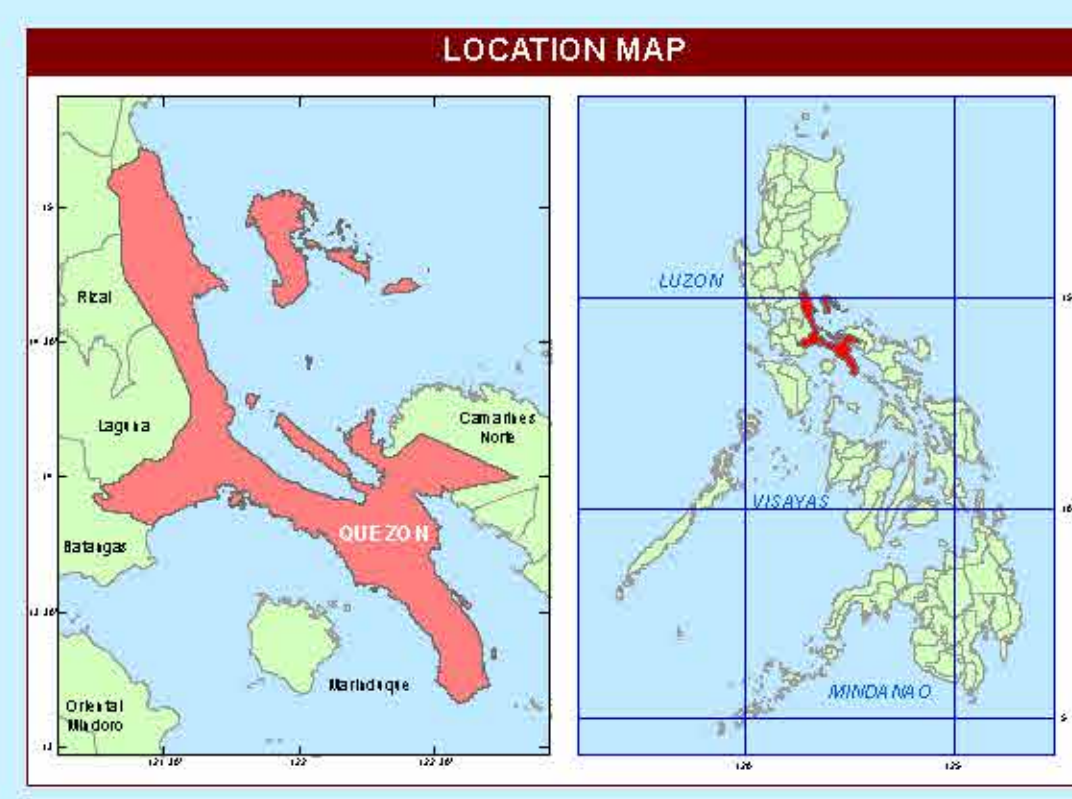
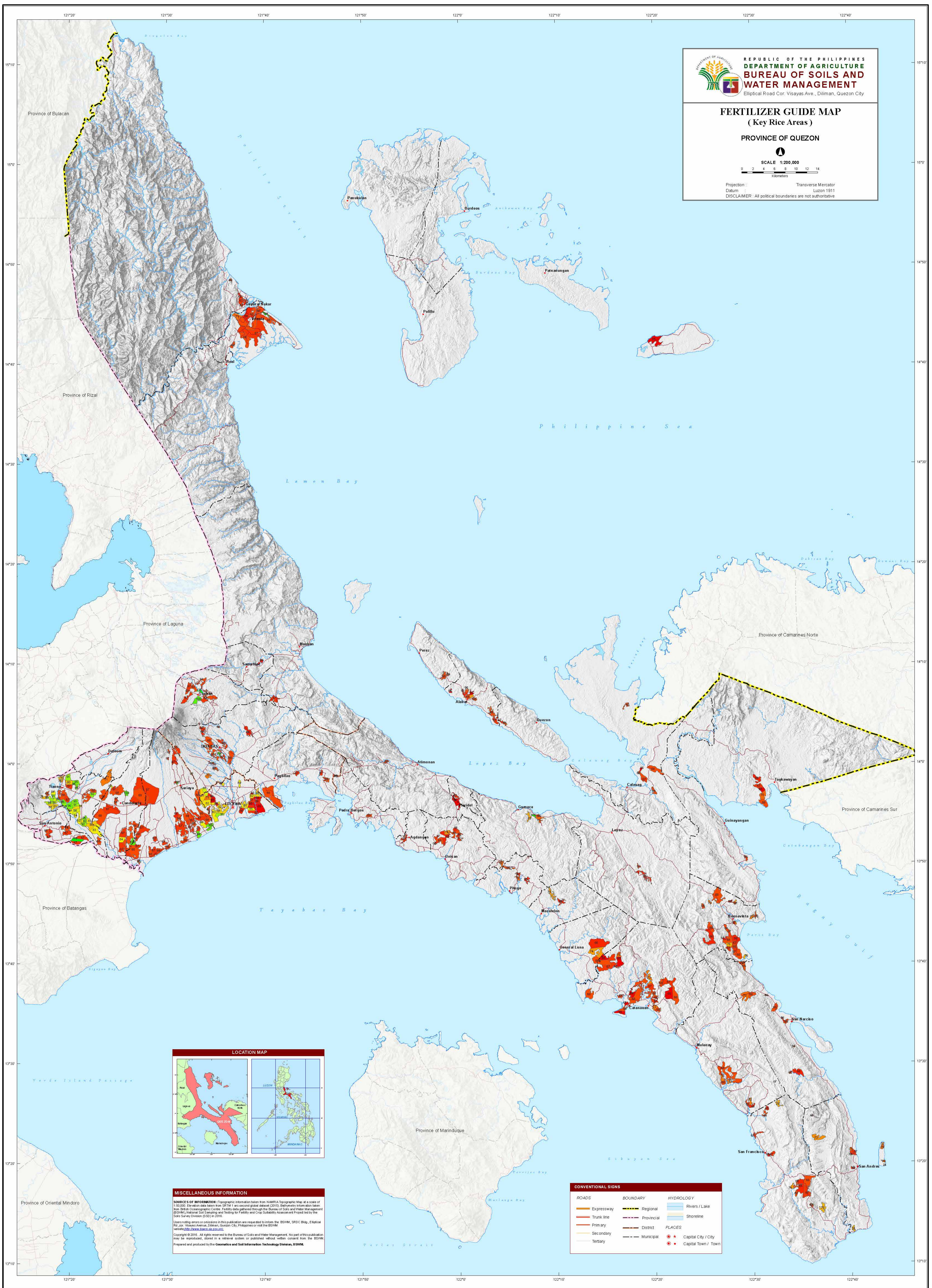

**REPUBLIC OF THE PHILIPPINES**  
**DEPARTMENT OF AGRICULTURE**  
**BUREAU OF SOILS AND WATER MANAGEMENT**  
 Elliptical Road Cor. Visayas Ave., Diliman, Quezon City

**FERTILIZER GUIDE MAP**  
**(Key Rice Areas)**  
**PROVINCE OF QUEZON**

SCALE 1:200,000  


Projection: Transverse Mercator  
 Datum: Luzon 1911  
 DISCLAIMER: All political boundaries are not authoritative



**MISCELLANEOUS INFORMATION**  
**SOURCE S OF INFORMATION** : Topographic information taken from NAMRIA Topographic Map at a scale of 1:50,000. Elevation data taken from SRTM 1 arc-second global dataset (2015). Bathymetry information taken from British Oceanographic Centre. Fertility data gathered through the Bureau of Soils and Water Management (BSWM), National Soil Sampling and Testing for Fertility and Crop Suitability Assessment Project led by the Soils Survey Division (SSD) in 2016.  
 Users noting errors or omissions in this publication are requested to inform the BSWM, SRDC Bldg., Elliptical Rd. Cor. Visayas Avenue, Diliman, Quezon City, Philippines or visit the BSWM website at [www.bswm.da.gov.ph](http://www.bswm.da.gov.ph).  
 Copyright © 2016. All rights reserved to the Bureau of Soils and Water Management. No part of this publication may be reproduced, stored in a retrieval system or published without written consent from the BSWM.  
 Prepared and produced by the Geomatics and Soil Information Technology Division, BSWM.

**CONVENTIONAL SIGNS**

ROADS	BOUNDARY	HYDROLOGY
Expressway	Regional	Rivers / Lake
Trunk line	Provincial	Shoreline
Primary	District	<b>PLACES</b>
Secondary	Municipal	Capital City / City
Tertiary		Capital Town / Town