


REPUBLIC OF THE PHILIPPINES
DEPARTMENT OF AGRICULTURE
**BUREAU OF SOILS AND
WATER MANAGEMENT**
Elliptical Road Cor. Visayas Ave., Diliman, Quezon City

NUTRIENT STATUS MAP : NITROGEN
(Key Rice Areas)





PROVINCE OF SIKUIJOR





SCALE 1:80,000

1 0.5 0 1 2 3
Kilometers

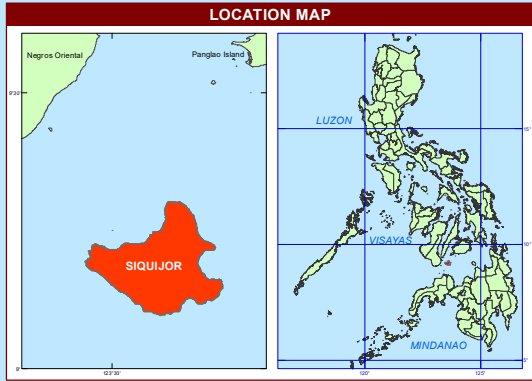
Projection : Transverse Mercator
Datum Luzon 1911
DISCLAIMER : All political boundaries are not authoritative

LEGEND					
MAPPING UNIT	DESCRIPTION	ORGANIC MATTER (OM)	NITROGEN (N) %	AREA	
				ha	%
	Low	0-2	0 - 0.10	-	-
				730	51.11
	Moderately Low	2.1-3.5	0.105-0.175	-	-
				-	-
	Moderately High	3.6-4.5	0.18-0.225	-	-
				259	18.14
	High	4.6-5.5	0.23 and above	-	-
				439	30.74
TOTAL				1,428	100.00

 Paddy Irrigated

 Paddy Non-Irrigated

Area estimated based on actual field survey, other information from DA-RDO's, MA's, Nisk service area, NAMRIA Land Cover (2010) and BSWM Land Use System Map



CONVENTIONAL SIGNS

ROADS

- Expressway
- Trunk line
- Primary
- Secondary
- Tertiary

BOUNDARY

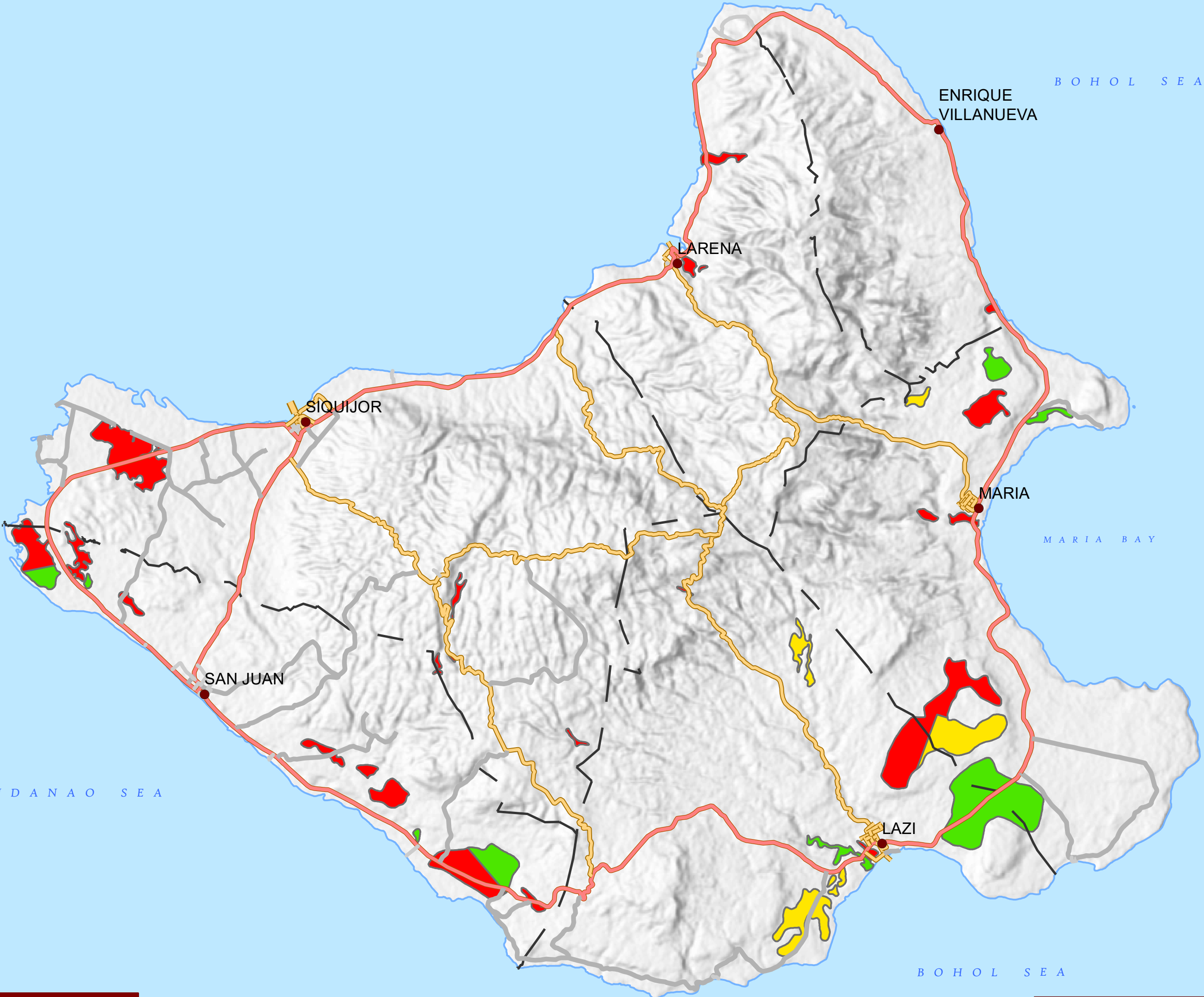
- Province
- District
- Municipality
- Shoreline

HYDROLOGY

- Rivers / Lake

PLACES

- Capital City / City
- Capital Town / Town
- Barangay



MISCELLANEOUS INFORMATION

SOURCES OF INFORMATION: Topographic information taken from NAMRIA Topographic Map at a scale of 1:50,000. Elevation data taken from SRTM 1 arc-second global dataset (2015). Bathymetry information taken from British Oceanographic Centre Fertility data gathered through the Soil Health Assessment-National Soil Sampling and Testing Project Phase II led by the Bureau of Soils and Water Management in partnership with the DA-Regional Field Offices (RFOs) and Local Government Units (LGUs).

Users noting errors or omissions in this publication are requested to inform the BSWM, SRDC Bldg., Elliptical Rd., cor. Visayas Avenue, Diliman, Quezon City, Philippines or visit the BSWM website (<http://www.bswm.da.gov.ph>).

Copyright © 2017. All rights reserved to the Bureau of Soils and Water Management. No part of this publication may be reproduced, stored in a retrieval system or published without written consent from the BSWM.

Prepared and produced by the GEOMATICS AND SOIL INFORMATION TECHNOLOGY DIVISION, BSWM.