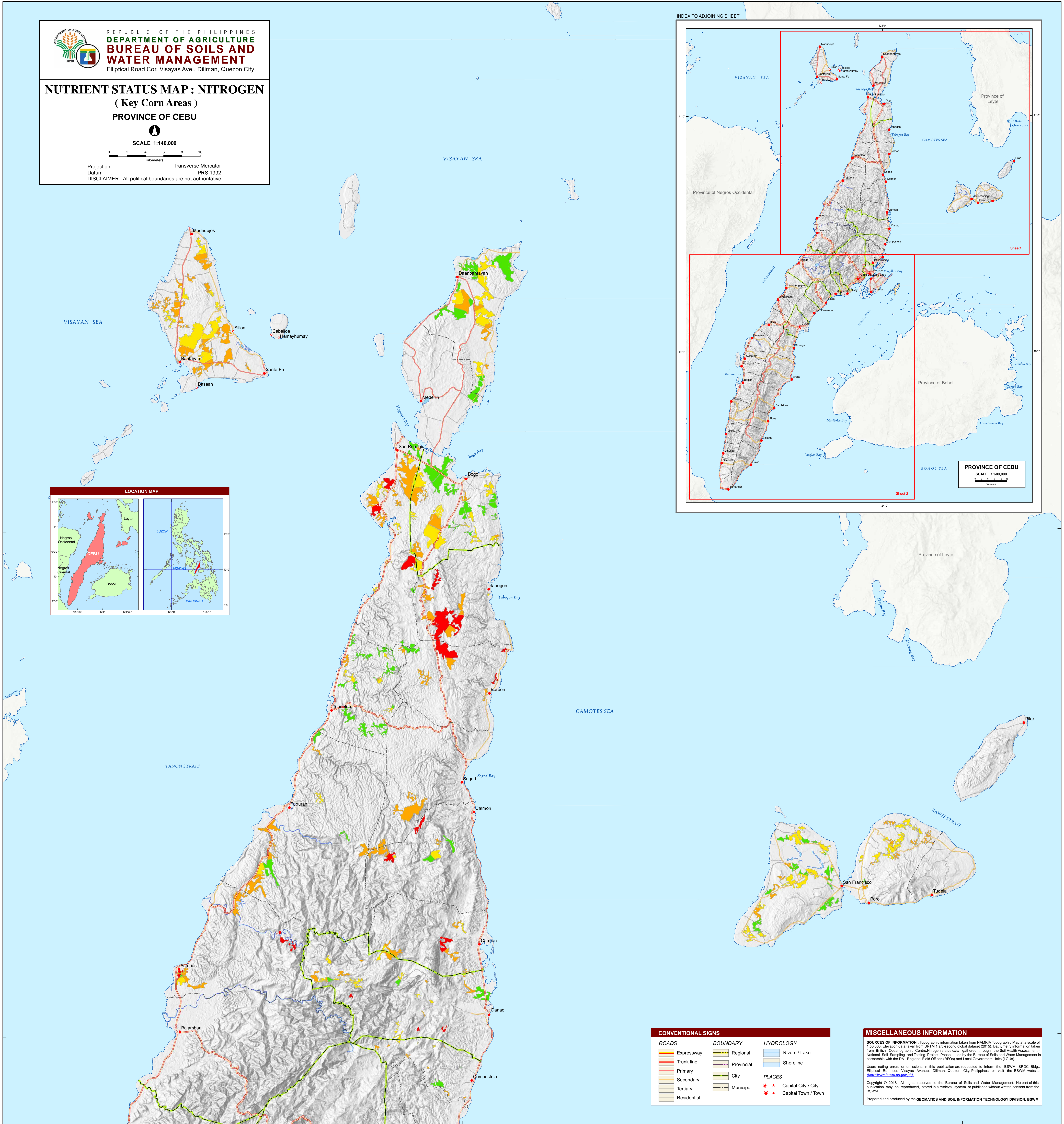
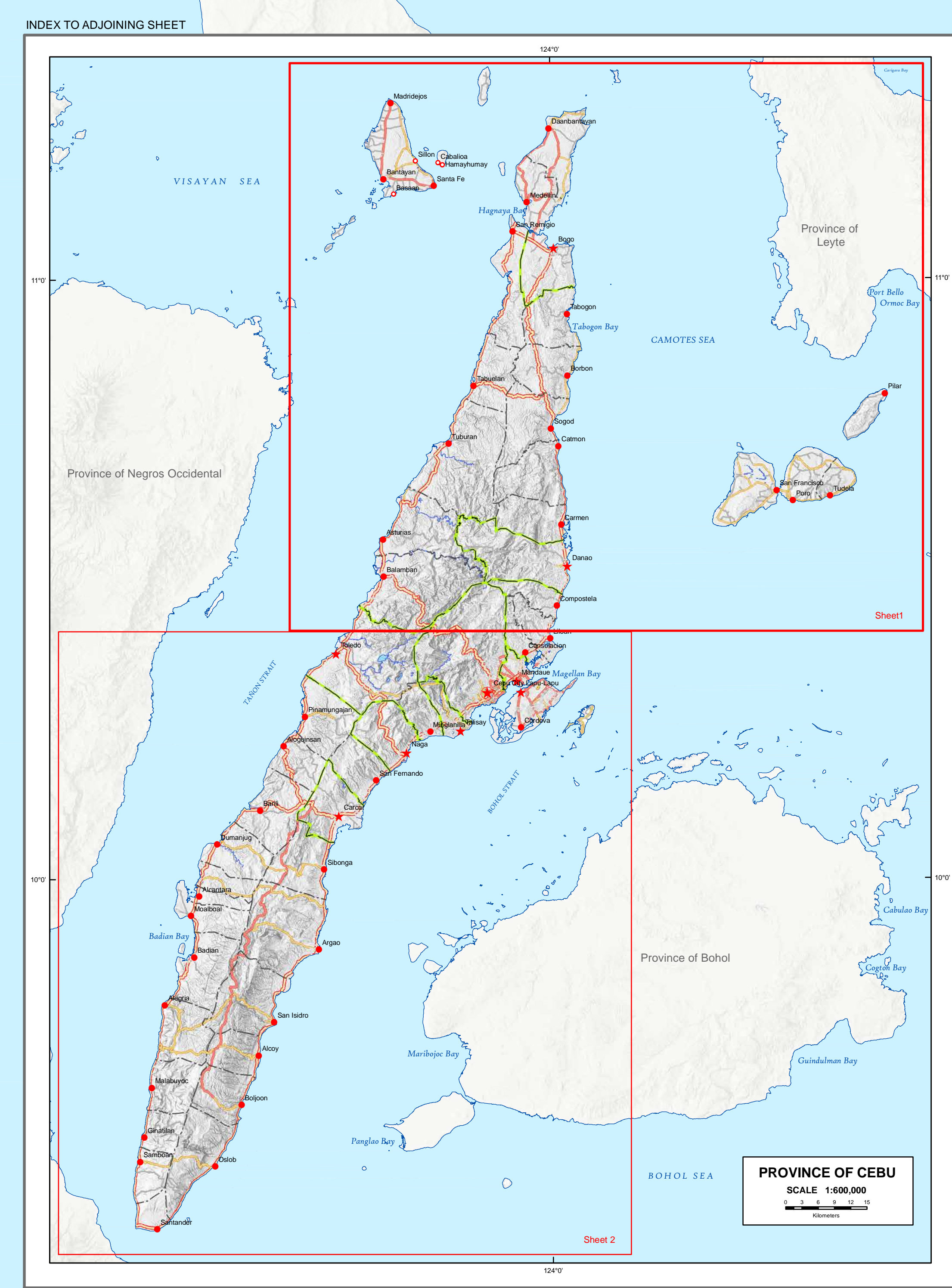
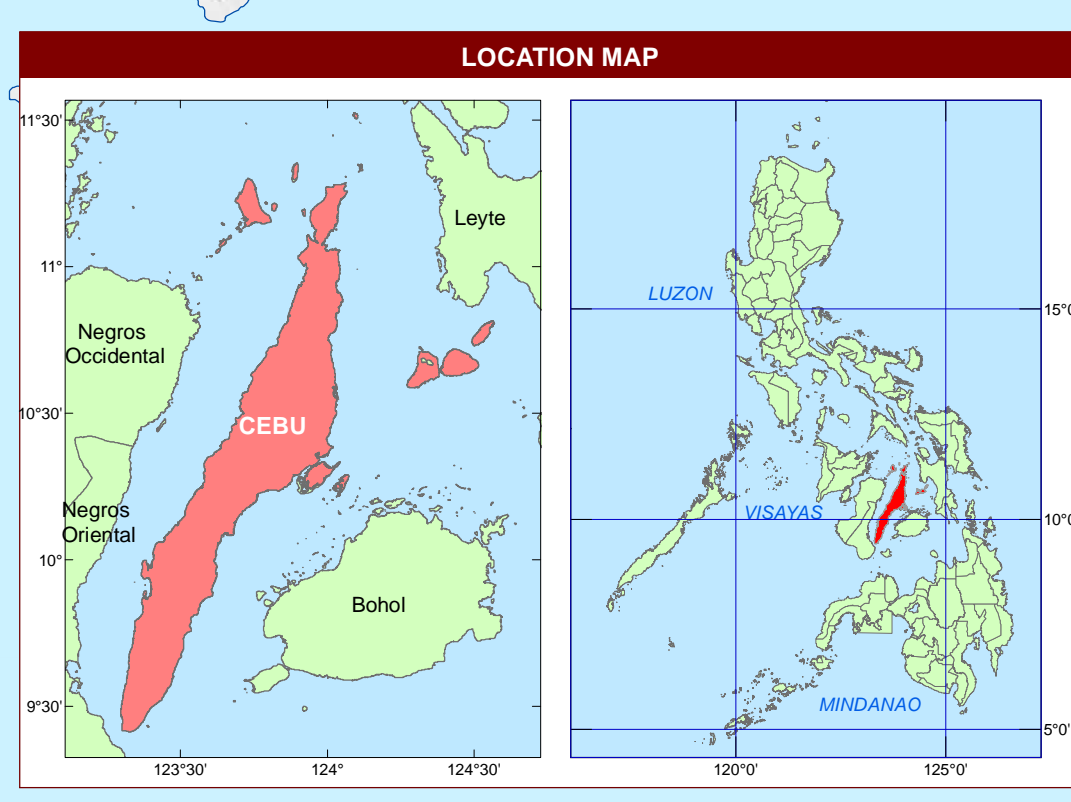

**REPUBLIC OF THE PHILIPPINES**  
**DEPARTMENT OF AGRICULTURE**  
**BUREAU OF SOILS AND WATER MANAGEMENT**  
 Elliptical Road Cor. Visayas Ave., Diliman, Quezon City

**NUTRIENT STATUS MAP : NITROGEN**  
**( Key Corn Areas )**  
**PROVINCE OF CEBU**

SCALE 1:140,000  
 0 2 4 6 8 10  
 Kilometers

Projection : Transverse Mercator  
 Datum : PRS 1992  
 DISCLAIMER : All political boundaries are not authoritative



**CONVENTIONAL SIGNS**

ROADS	BOUNDARY	HYDROLOGY
Expressway	Regional	Rivers / Lake
Trunk line	Provincial	Shoreline
Primary	City	<b>PLACES</b>
Secondary	Municipal	Capital City / City
Tertiary		Capital Town / Town
Residential		

**MISCELLANEOUS INFORMATION**


**SOURCES OF INFORMATION :** Topographic information taken from NAMRIA Topographic Map at a scale of 1:50,000. Elevation data taken from SRTM 1 arc-second global dataset (2015). Bathymetry information taken from British Oceanographic Corinn Nitrogen status data gathered through the Soil Health Assessment - National Soil Sampling and Testing Project Phase III led by the Bureau of Soils and Water Management in partnership with the DA - Regional Field Offices (RFOs) and Local Government Units (LGUs).

Users noting errors or omissions in this publication are requested to inform the BSWM, SRDC Bldg., Elliptical Rd., cor. Visayas Avenue, Diliman, Quezon City, Philippines or visit the BSWM website (<http://www.bswm.da.gov.ph>).

Copyright © 2018. All rights reserved to the Bureau of Soils and Water Management. No part of this publication may be reproduced, stored in a retrieval system or published without written consent from the BSWM.

Prepared and produced by the **GEOMATICS AND SOIL INFORMATION TECHNOLOGY DIVISION, BSWM.**

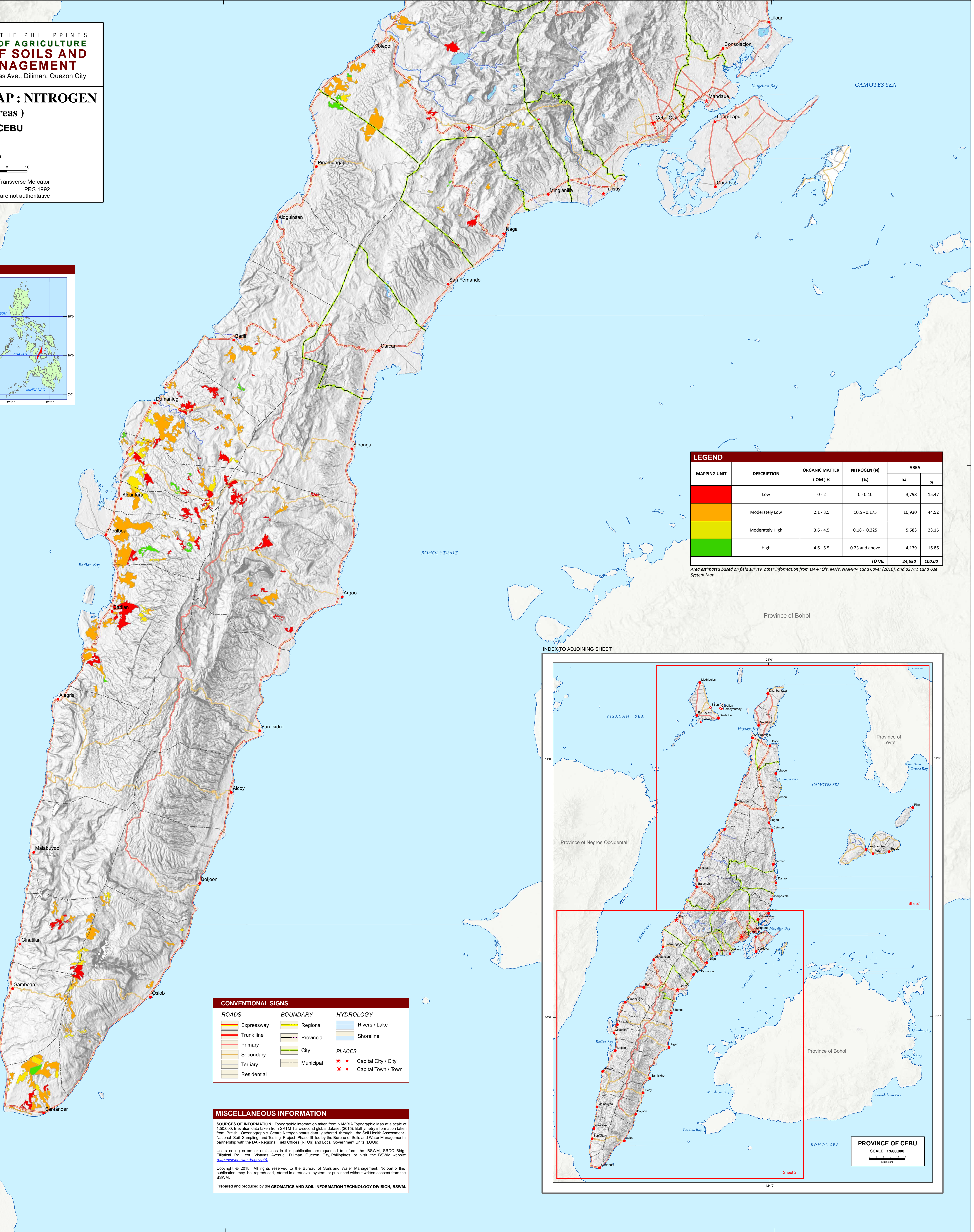
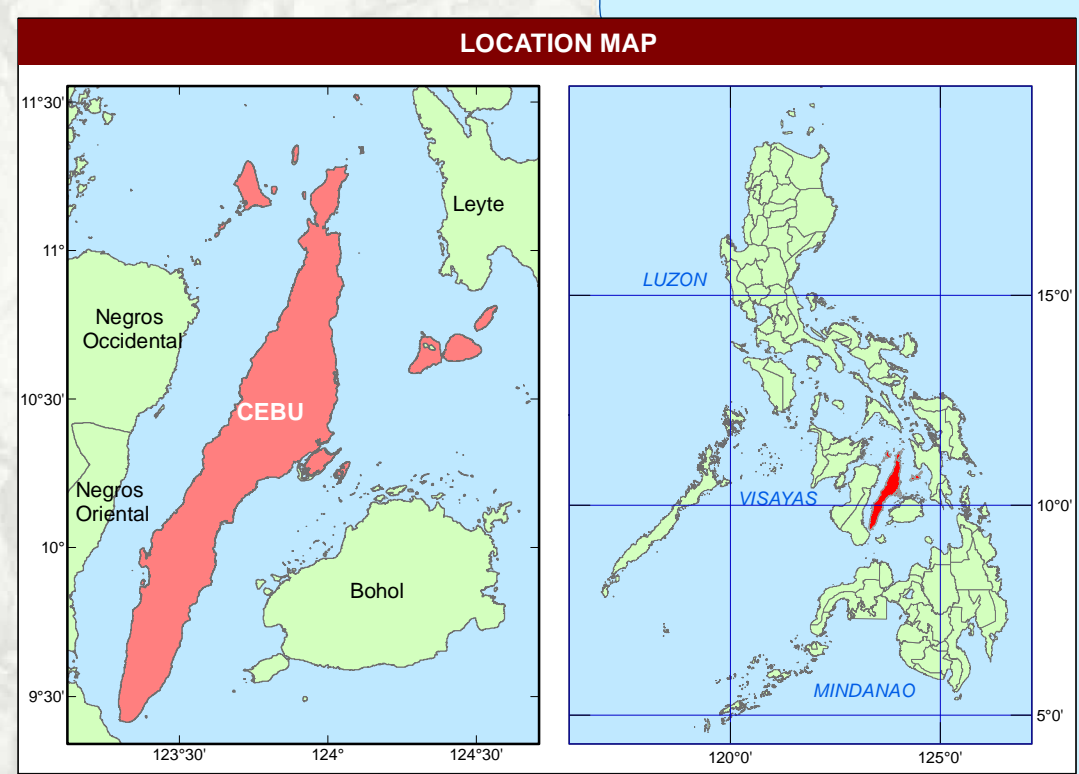



**REPUBLIC OF THE PHILIPPINES**  
**DEPARTMENT OF AGRICULTURE**  
**BUREAU OF SOILS AND WATER MANAGEMENT**  
 Elliptical Road Cor. Visayas Ave., Diliman, Quezon City

**NUTRIENT STATUS MAP : NITROGEN**  
**( Key Corn Areas )**  
**PROVINCE OF CEBU**

SCALE 1:140,000  
 0 2 4 6 8 10  
 Kilometers

Projection : Transverse Mercator  
 Datum : PRS 1992  
 DISCLAIMER : All political boundaries are not authoritative



**LEGEND**

MAPPING UNIT	DESCRIPTION	ORGANIC MATTER (OM) %	NITROGEN (N) (%)	AREA	
				ha	%
	Low	0 - 2	0 - 0.10	3,798	15.47
	Moderately Low	2.1 - 3.5	10.5 - 0.175	10,930	44.52
	Moderately High	3.6 - 4.5	0.18 - 0.225	5,683	23.15
	High	4.6 - 5.5	0.23 and above	4,139	16.86
<b>TOTAL</b>				<b>24,550</b>	<b>100.00</b>

Area estimated based on field survey, other information from DA-RFO's, MA's, NAMRIA Land Cover (2010), and BSWM Land Use System Map

**CONVENTIONAL SIGNS**

ROADS	BOUNDARY	HYDROLOGY
Expressway	Regional	Rivers / Lake
Trunk line	Provincial	Shoreline
Primary	City	<b>PLACES</b>
Secondary	Municipal	Capital City / City
Tertiary		Capital Town / Town
Residential		

**MISCELLANEOUS INFORMATION**

**SOURCES OF INFORMATION** - Topographic information taken from NAMRIA Topographic Map at a scale of 1:50,000. Elevation data taken from SRTM 1 arc-second global dataset (2015). Bathymetry information taken from British Oceanographic Centre-Nitrogen status data gathered through the Soil Health Assessment-National Soil Sampling and Testing Project Phase III led by the Bureau of Soils and Water Management in partnership with the DA - Regional Field Offices (RFOs) and Local Government Units (LGUs).

Users noting errors or omissions in this publication are requested to inform the BSWM, SRDC Bldg., Elliptical Rd., cor. Visayas Avenue, Diliman, Quezon City, Philippines or visit the BSWM website (<http://www.dawm.da.gov.ph/>).

Copyright © 2018. All rights reserved to the Bureau of Soils and Water Management. No part of this publication may be reproduced, stored in a retrieval system or published without written consent from the BSWM.

Prepared and produced by the **GEOMATICS AND SOIL INFORMATION TECHNOLOGY DIVISION, BSWM.**

