

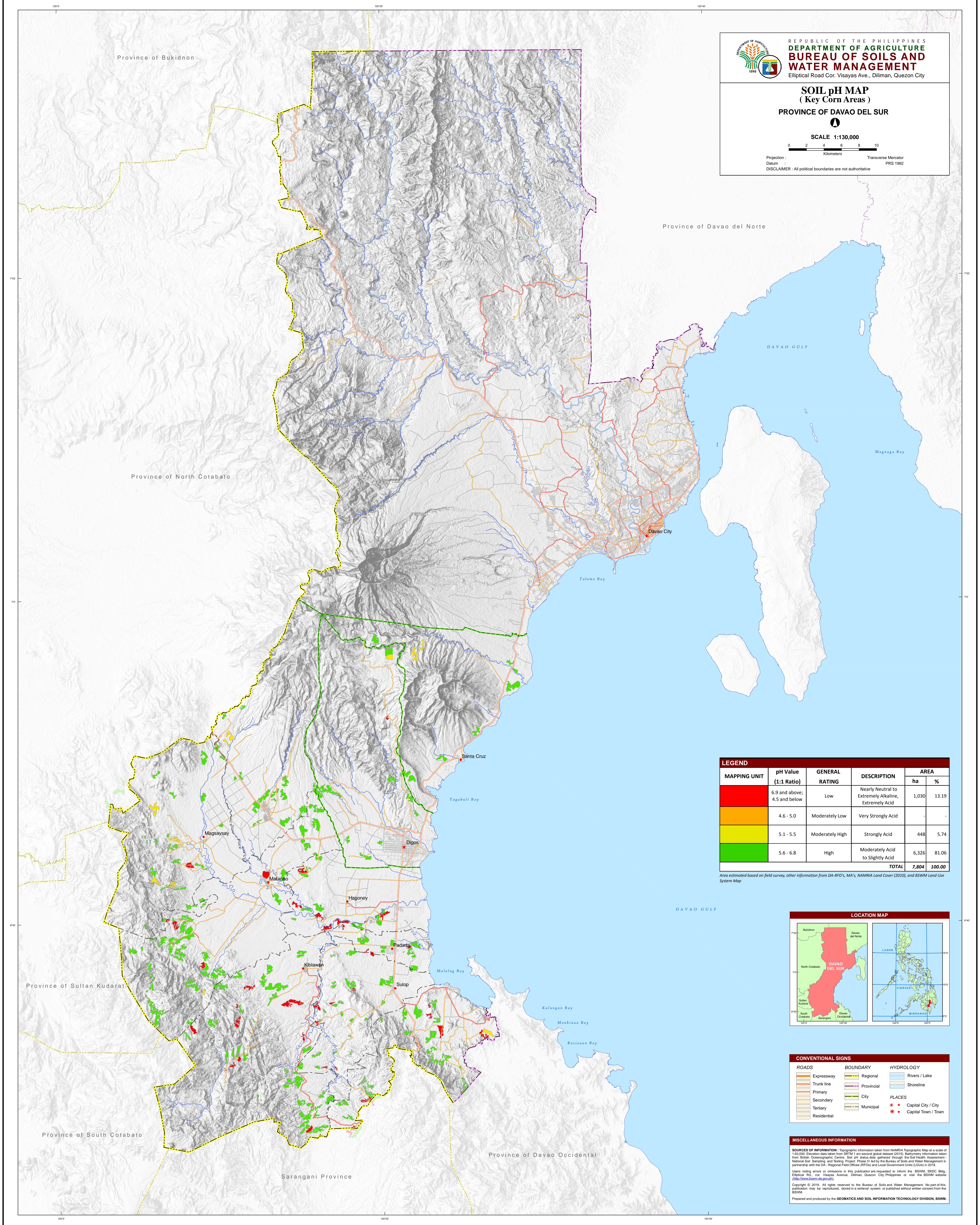


REPUBLIC OF THE PHILIPPINES
 DEPARTMENT OF AGRICULTURE
BUREAU OF SOILS AND WATER MANAGEMENT
 Elliptical Road Cor. Visayas Ave., Diliman, Quezon City

SOIL pH MAP
 (Key Corn Areas)
PROVINCE OF DAVAO DEL SUR

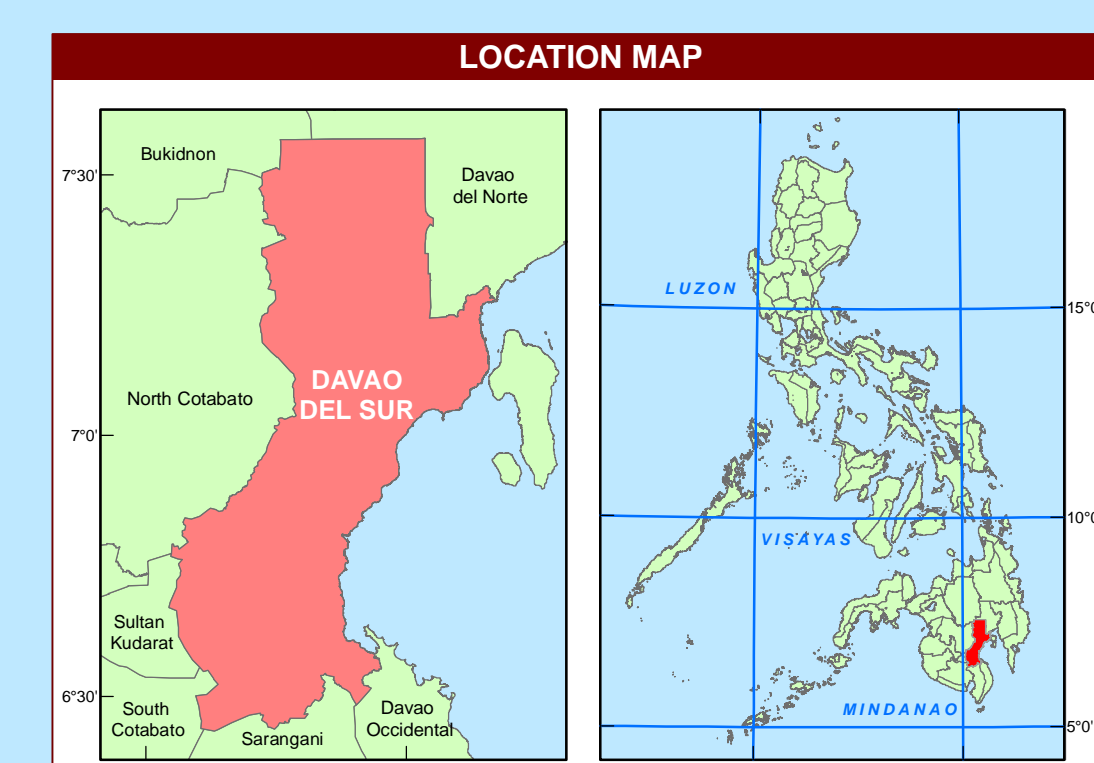
SCALE 1:130,000

Projection : Transverse Mercator
 Datum : PRS 1992
 DISCLAIMER : All political boundaries are not authoritative



MAPPING UNIT	pH Value (1:1 Ratio)	GENERAL RATING	DESCRIPTION	AREA	
				ha	%
[Red]	6.9 and above, 4.5 and below	Low	Nearly Neutral to Extremely Alkaline, Extremely Acid	1,030	13.19
[Orange]	4.6 - 5.0	Moderately Low	Very Strongly Acid	-	-
[Yellow]	5.1 - 5.5	Moderately High	Strongly Acid	448	5.74
[Green]	5.6 - 6.8	High	Moderately Acid to Slightly Acid	6,326	81.06
TOTAL				7,804	100.00

Area estimated based on field survey, other information from DA-RFO's, MA's, NAMRIA Land Cover (2010), and BSWM Land Use System Map



CONVENTIONAL SIGNS		
ROADS	BOUNDARY	HYDROLOGY
Expressway	Regional	Rivers / Lake
Trunk line	Provincial	Shoreline
Primary	City	PLACES
Secondary	Municipal	Capital City / City
Tertiary		Capital Town / Town
Residential		

MISCELLANEOUS INFORMATION
 SOURCES OF INFORMATION : Topographic information taken from NAMRIA Topographic Map at a scale of 1:50,000. Elevation data taken from SRTM 1 arc-second global dataset (2010). Boundary information taken from British Oceanographic Centre. Soil pH status data gathered through the Soil Health Assessment- National Soil Sampling and Testing Project Phase IV led by the Bureau of Soils and Water Management in partnership with the DA - Regional Field Offices (RFOs) and Local Government Units (LGUs) in 2019.
 Users noting errors or omissions in this publication are requested to inform the BSWM, SRDC (Bldg., Elliptical Rd., cor. Visayas Avenue, Diliman, Quezon City, Philippines) or visit the BSWM website (<http://www.dawm.da.gov.ph/>).
 Copyright © 2019. All rights reserved to the Bureau of Soils and Water Management. No part of this publication may be reproduced, stored in a retrieval system, or published without written consent from the BSWM.
 Prepared and produced by the **GEOMATICS AND SOIL INFORMATION TECHNOLOGY DIVISION, BSWM.**