

REPUBLIC OF THE PHILIPPINES
DEPARTMENT OF AGRICULTURE
BUREAU OF SOILS AND WATER MANAGEMENT
Elliptical Road Cor. Visayas Ave., Diliman, Quezon City

NUTRIENT STATUS MAP : PHOSPHOROUS

(Key Corn Areas)

PROVINCE OF ISABELA

SCALE 1:165,000

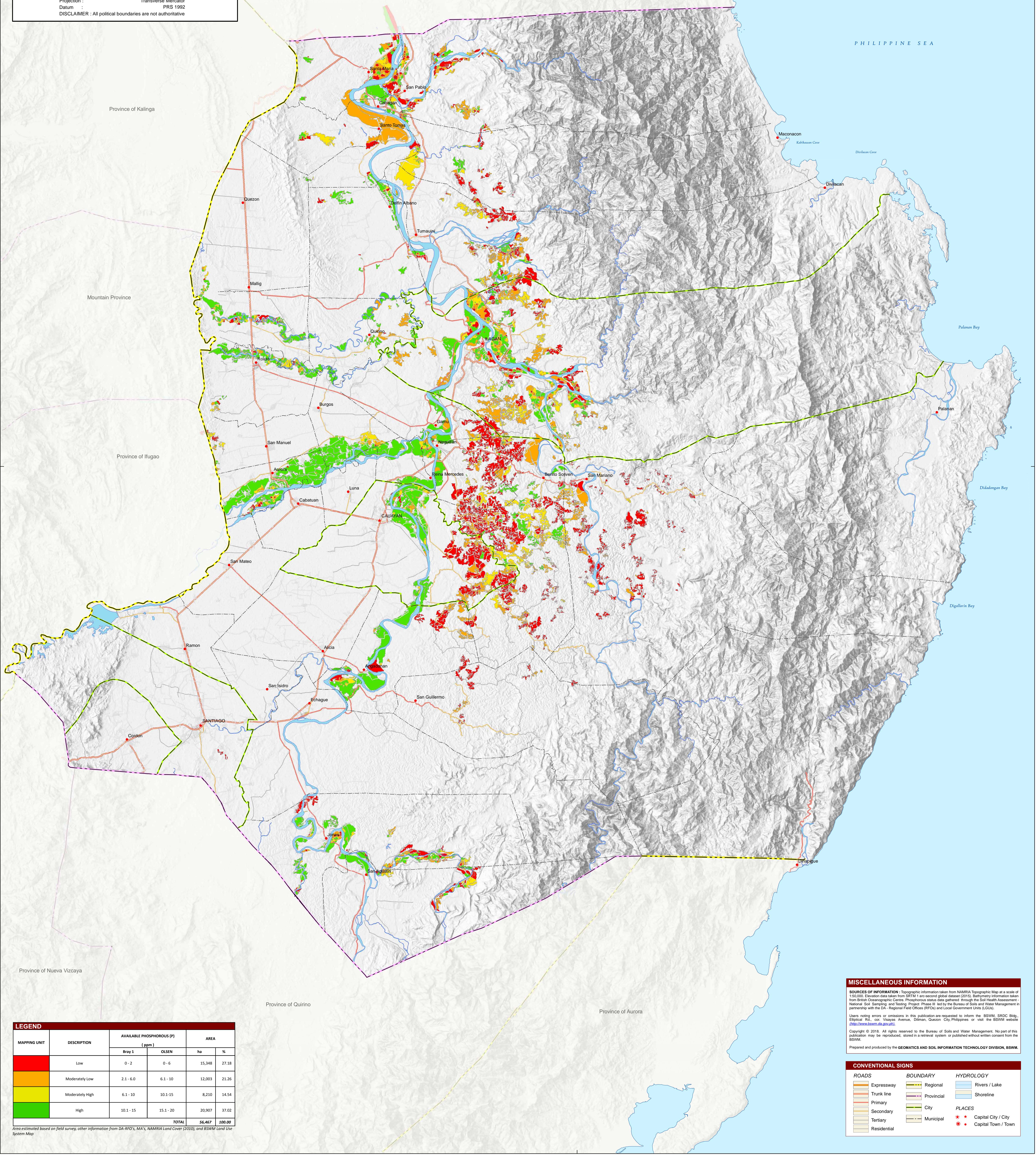
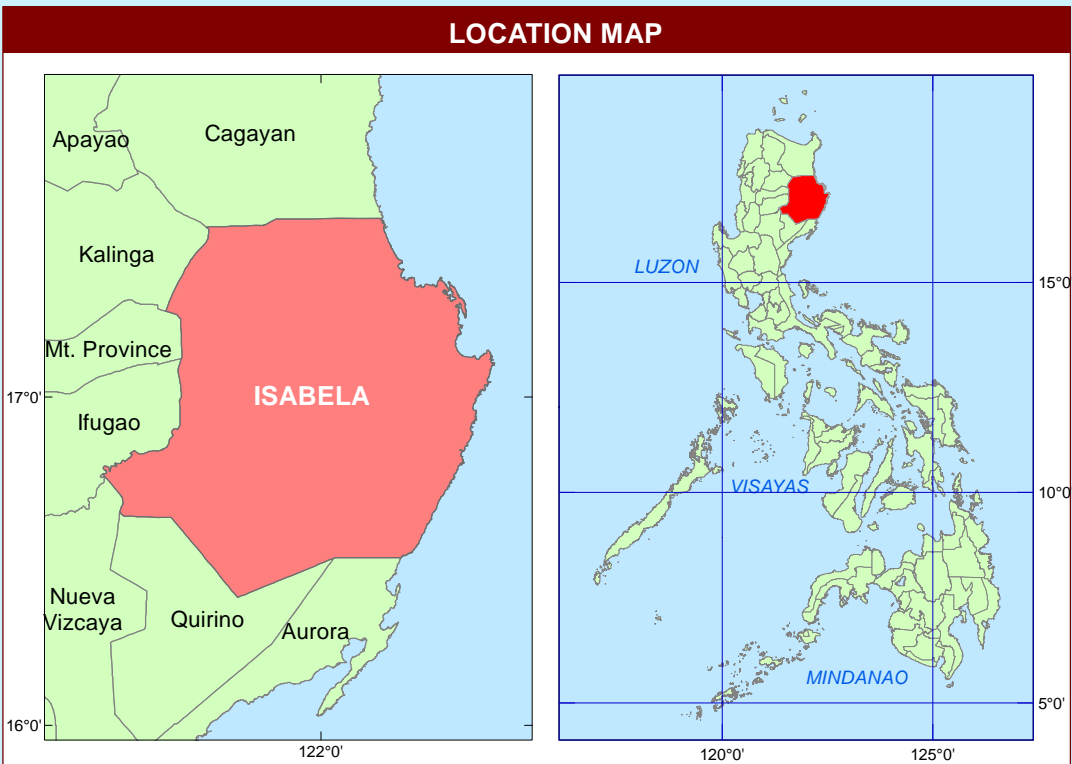
0 1 2 4 6 8 10

Kilometers

Projection : Transverse Mercator

Datum : PRS 1992

DISCLAIMER : All political boundaries are not authoritative



| LEGEND | | | | | |
|-----------------|-----------------|---------------------------|-----------|--------|--------|
| MAPPING UNIT | DESCRIPTION | AVAILABLE PHOSPHOROUS (P) | | AREA | |
| | | Bray 1 | OLSEN | ha | % |
| Low | Low | 0 - 2 | 0 - 6 | 15,348 | 27.38 |
| Moderately Low | Moderately Low | 2.1 - 6.0 | 6.1 - 10 | 12,003 | 21.26 |
| Moderately High | Moderately High | 6.1 - 10 | 10.1 - 15 | 8,210 | 14.54 |
| High | High | 10.1 - 15 | 15.1 - 20 | 20,907 | 37.02 |
| TOTAL | | | | 56,467 | 100.00 |

Area estimated based on field survey, other information from DA-RFO's, MA's, NAMRIA Land Cover (2010), and BSWM Land Use System Map

MISCELLANEOUS INFORMATION

SOURCES OF INFORMATION : Topographic information taken from NAMRIA Topographic Map at a scale of 1:50,000. Elevation data taken from SRTM 1 arc-second global dataset (2010). Bathymetry information taken from British Oceanographic Centre. Phosphorous status data gathered through the Soil Health Assessment - National Soil Sampling and Testing Project Phase II, led by the Bureau of Soils and Water Management in partnership with the DA - Regional Field Offices (RFOs) and Local Government Units (LGUs).

Users noting errors or omissions in this publication are requested to inform the BSWM, SRDC Bldg., Elliptical Rd., Cor. Visayas Avenue, Diliman, Quezon City, Philippines or visit the BSWM website <http://www.bswm.da.gov.ph>.

Copyright © 2018. All rights reserved to the Bureau of Soils and Water Management. No part of this publication may be reproduced, stored in a retrieval system, or published without written consent from the BSWM.

Prepared and produced by the **GEOMATICS AND SOIL INFORMATION TECHNOLOGY DIVISION, BSWM.**

CONVENTIONAL SIGNS

ROADS

- Expressway
- Trunk line
- Primary
- Secondary
- Tertiary
- Residential

BOUNDARY

- Regional
- Provincial
- City
- Municipal

HYDROLOGY

- Rivers / Lake
- Shoreline

PLACES

- Capital City / City
- Capital Town / Town